

Operating and Maintenance Instructions

Solar Eclipse LED Light

Hard Ceiling



Contents

Introduction	3
Symbols Used in This Manual	3
Safety Instructions	4-5
Tool List	5
Frame Kit- Installation Procedure	6-9
Installation Procedure	10-14
Disinfecting, Cleaning and Sterilization	15
Warranty	16

Introduction




Thank you for your purchase of the Solar Series Eclipse LED Light.

This installation manual gives you instructions on how to install the Solar Eclipse LED light. Please read the following instructions very carefully and follow the safety instructions and requirements. The images in this manual are showing the setup of a 2 x 4 fixture. Your fixture can be of a different size but will have the same installation procedure.

Please read the following instructions very carefully and follow the safety instructions and requirements.

Symbols Used in This Manual

The warning symbols indicate all instructions that are important for safety. Failure to comply with them can lead to injury, damage to the luminaires or the equipment. In combination with the following signal words the warning symbols means:

 DANGER	Can lead to death or serious injury.
 WARNING	Can lead to injury.
	ETL certification mark

Trademarks: All trade names mentioned in these instructions are the exclusive property of the relevant manufacturers.

Safety Instructions

Intended use

The Solar Eclipse LED Light is intended to provide patient room lighting. It is to be used near the patient to support treatment, which pose no risk to the patient in the event of any interruption caused by light failure. It is meant for continuous operation.

Safety Instructions

No modifications can be carried out by the end user. Doing so will void warranty, ETL approval, and may cause severe risks. Serviceable parts must be replaced with factory OEM parts. The user must comply with all building safety codes and disinfection requirements. Fixture must be installed with the reading light (end of fixture) towards the wall, closer to the head of the patient's bed.

Warning Levels



Indication of hazards that can lead to death or serious injury if measures are disregarded.



Indication of hazards that can lead to injury if measures are disregarded.



Indication of hazards that can lead to damage to property if measures are disregarded.



The above is an explosion hazard warning symbol. Non-compliance with this symbol may result in damages or injuries due to explosion.



The above is an electric shock warning symbol. Non-compliance with this symbol may result in damages or injuries due to electric shock.

Safety Instructions

DANGER

Mounting by qualified personnel

- Mounting must be done by qualified personnel only. Lack of appropriate knowledge could be life-threatening.

DANGER

Life-threatening danger from falling luminaire.

- The ceiling must be made of solid concrete to guarantee a secure hold.

DANGER

Electric shocks are life-threatening.

- The electrical mains must be isolated from the by an external all-pole switch.

DANGER

Risk of injury from falling parts.

- Mounting must be performed by two people.

CAUTION

Use protective equipment in line with tool manufacturer's instructions.

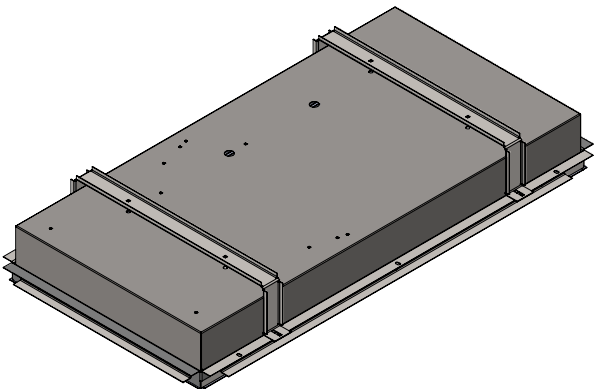
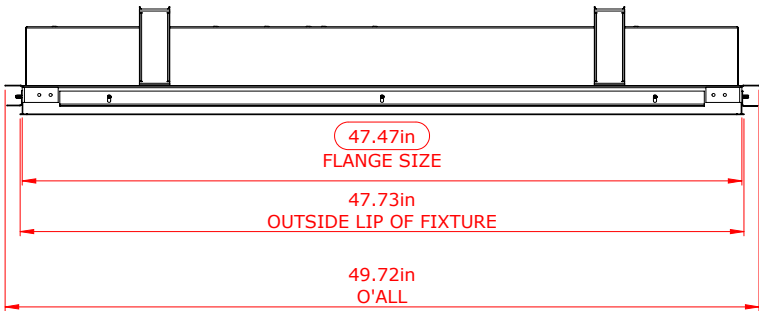
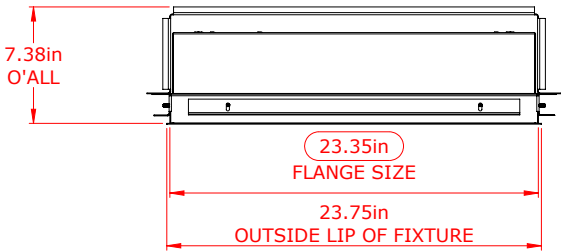
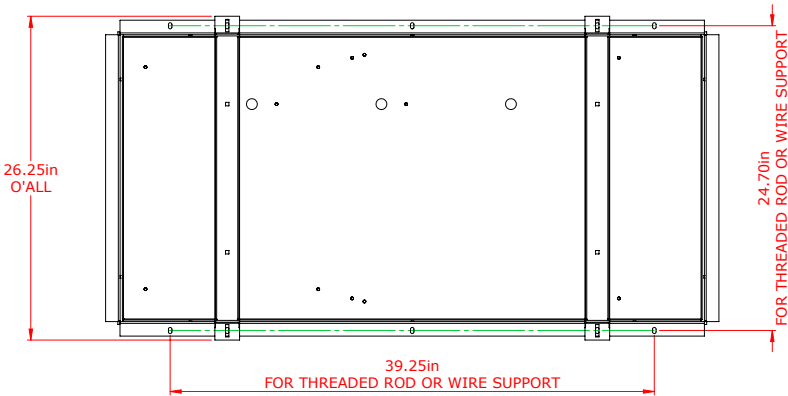
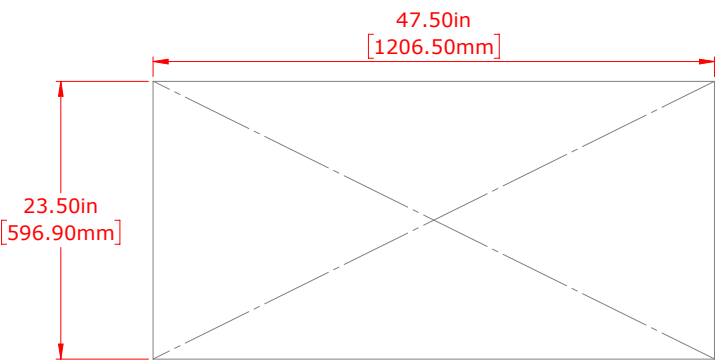
Tool List

1. Phillips screwdriver
2. Flat head screwdriver
3. Connecting wire
4. Marrette connectors

Frame Kit - Installation Procedure

Dimensions - Flange Kit 2 x 4

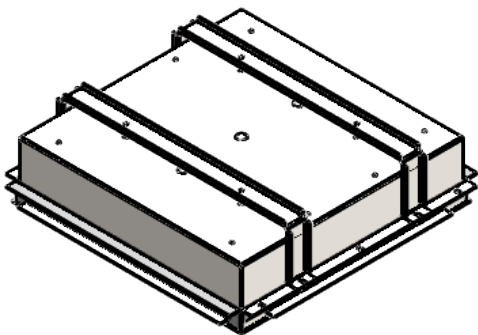
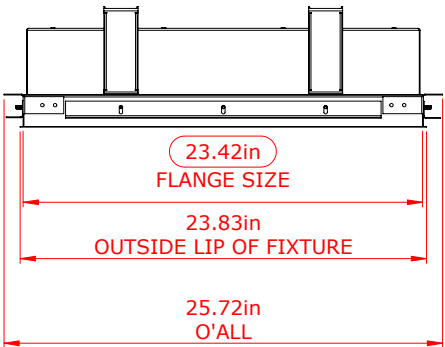
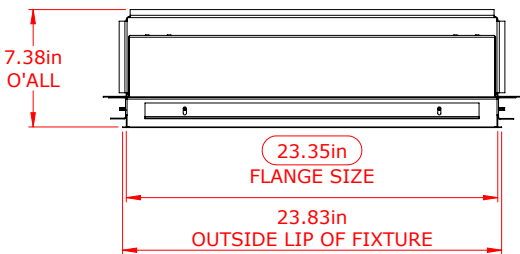
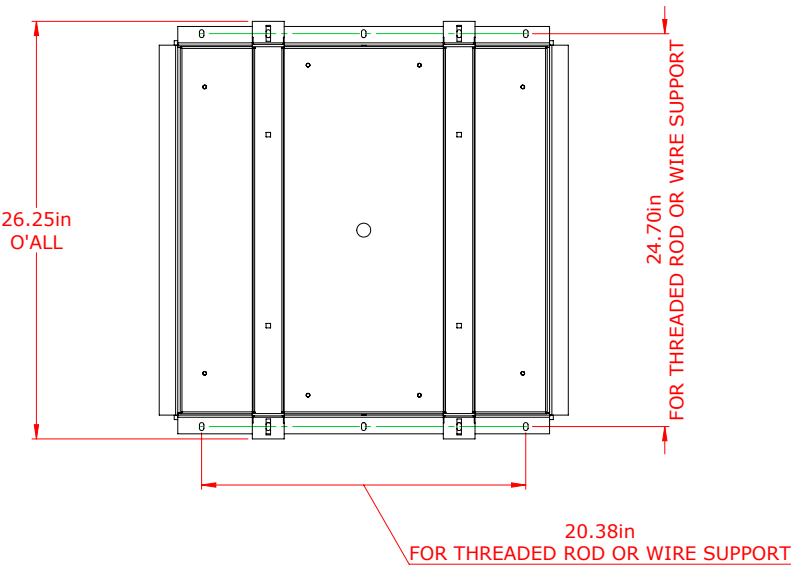
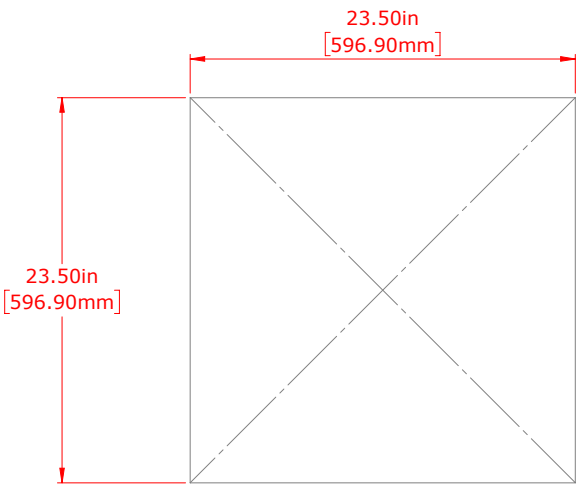
Suggested Ceiling Cutout Dimensions



Frame Kit - Installation Procedure

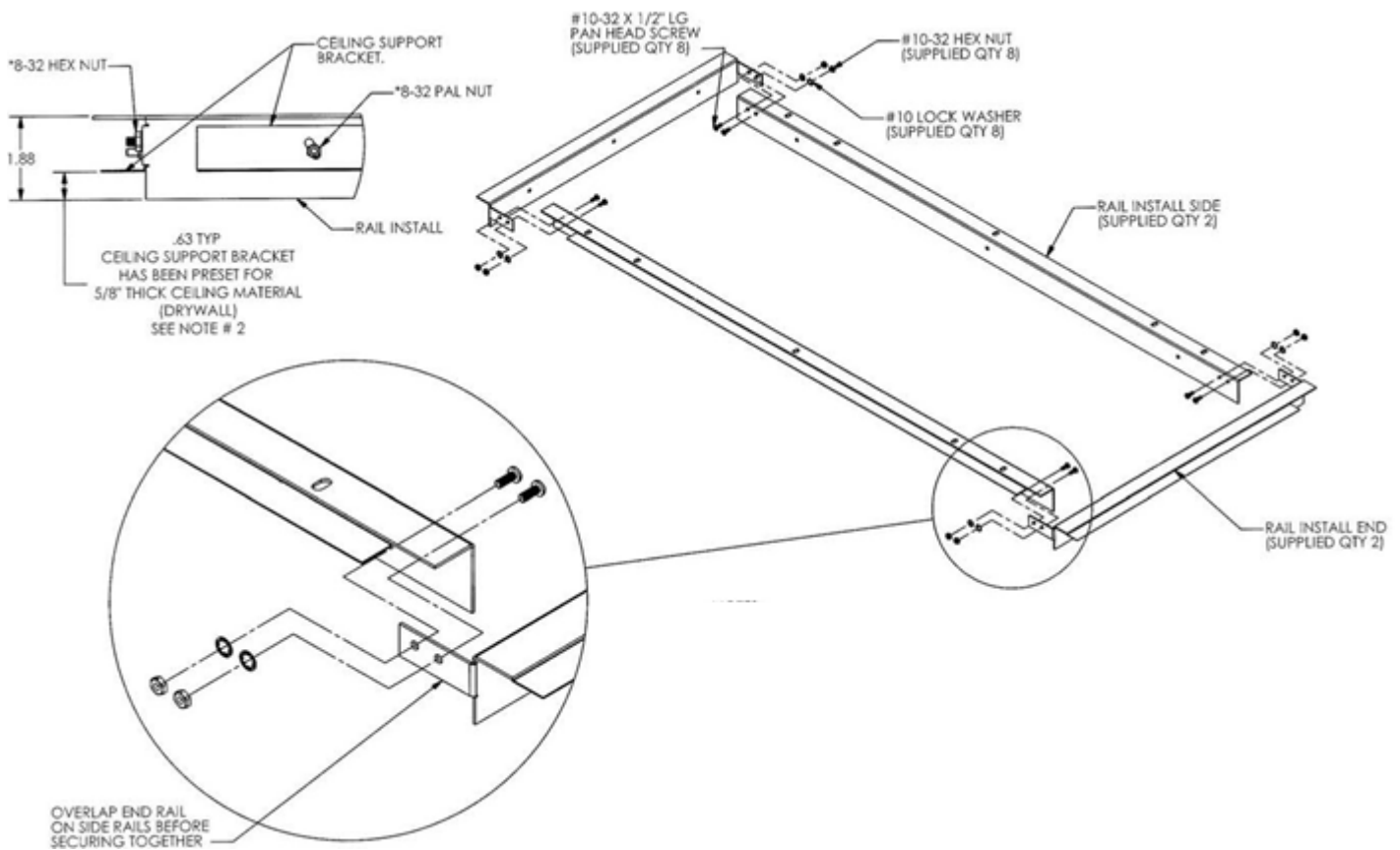
Dimensions - Flange Kit 2 x 2

Suggested Ceiling Cutout Dimensions



Frame Kit - Installation Procedure

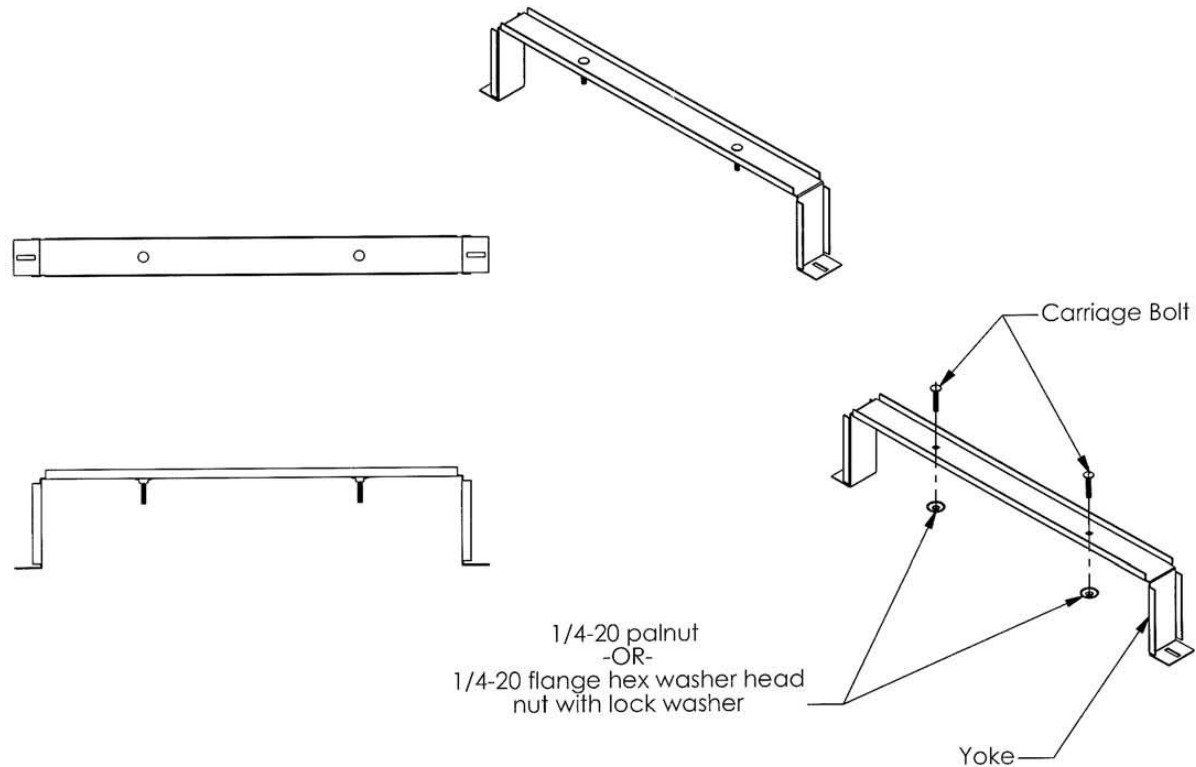
Frame Assembly Instructions



Note: The outlines shown on this instruction sheet are showing the set up of a 2 x 4 frame. Your assembly may be a different size, but the assembly of the install frame and insertion of the housing is the same.

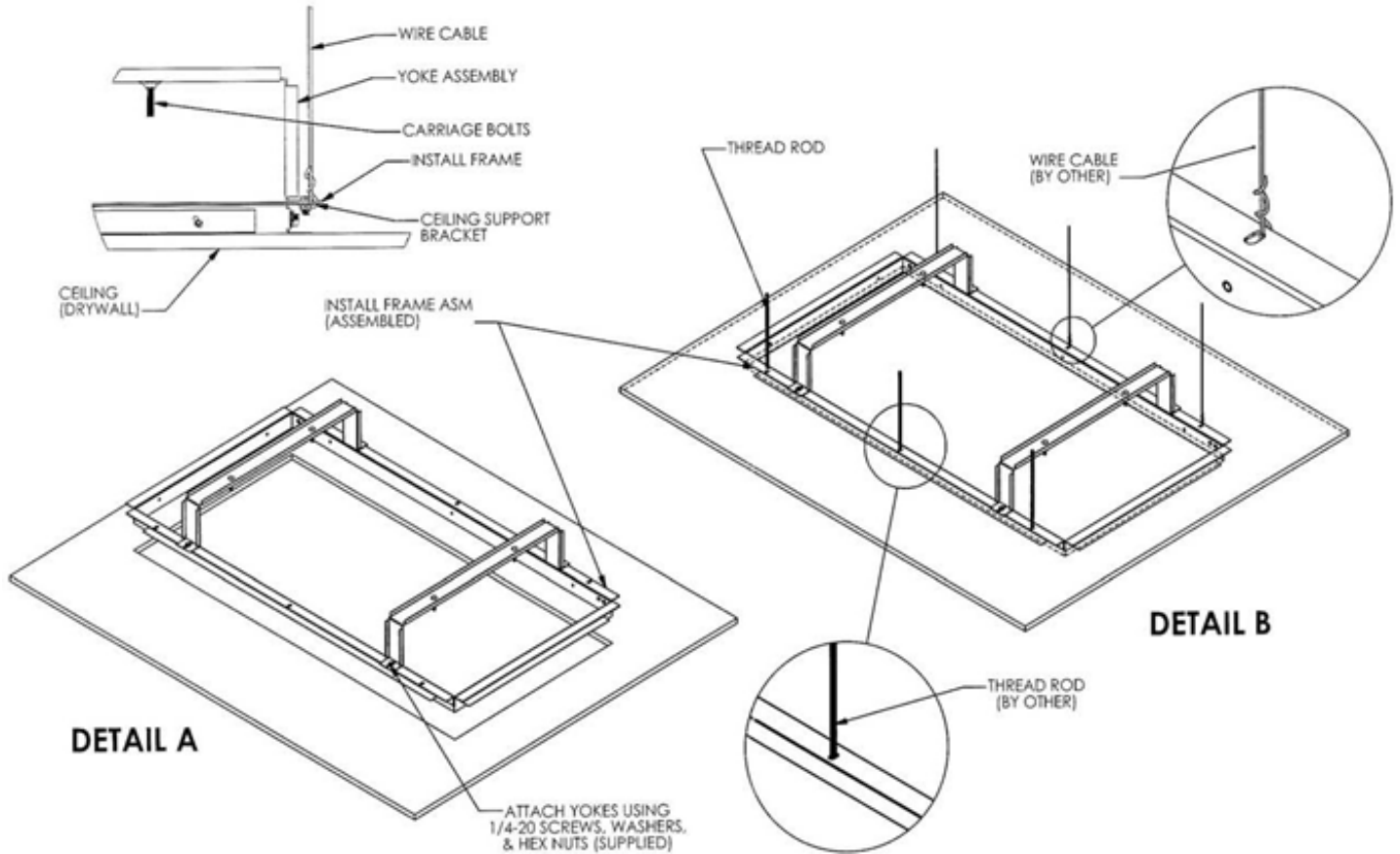
1. When assembling the install frame, make sure the end flanges overlap the side rails.
2. The ceiling support brackets have been pre-assembled using 5/ 8" ceiling material (drywall). The bracket can be adjusted from 1/2" thick to 3/4" thick.

Frame Kit - Installation Procedure



1. Amico supplies the 1-1/2" long carriage bolt.
2. Slide the bolt through the square hole on top of the yoke until it is locked in place.
3. On the underside of yoke, screw on the palnut or large flange hex washer head nut.
Note: Lock washer must be used with hex nut to keep the carriage bolt secured.
4. Retain the balance of the hardware (washers and nuts) for installation of housing.

Installation Procedure

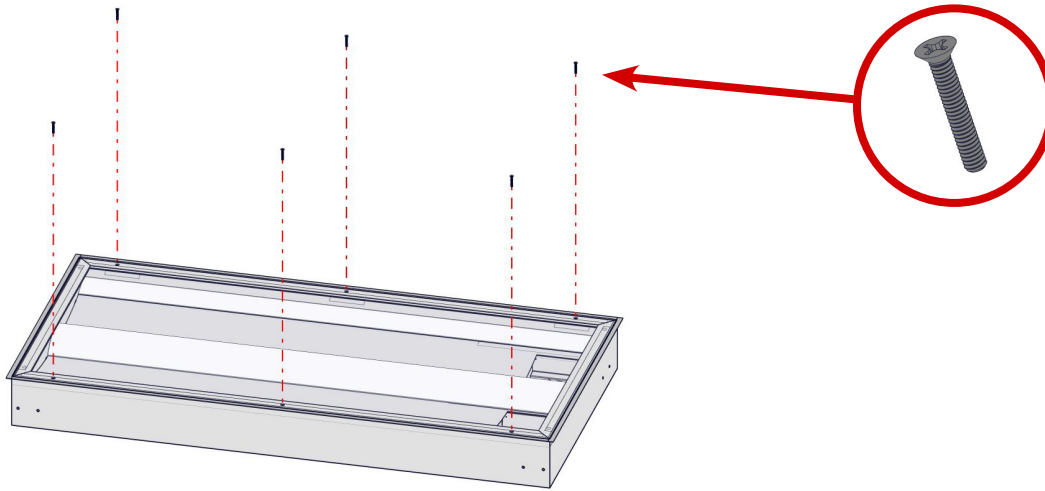


Note: The outlines shown on this instruction sheet are showing the set up of a 2 x 4 fixture. Your fixture maybe a different size and may have only four mountings, but the assembly of the install frame and insertion of the housing is the same.

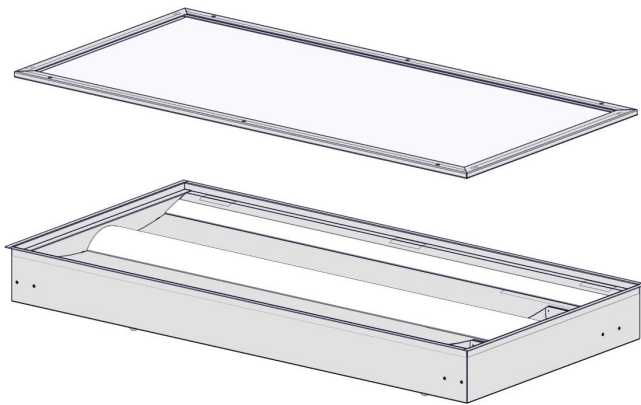
1. Once install frame is assembled, attach the yokes using the 1/4-20 hardware provided.
2. Slide frame assembly up through the ceiling opening and rest on the ceiling (see Detail A).
3. Install frame may be supported in multiple ways (see Detail B).
 - With the use of a threaded rod (by others) to the super structure.
 - or
 - With cable (by others) wrapped around the side rails and attached to the super structure.

Installation Procedure

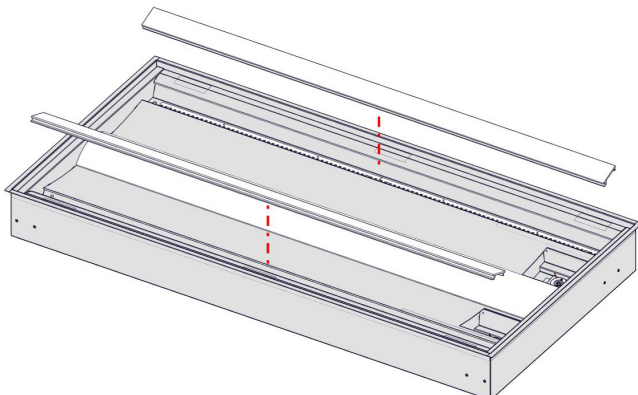
1. Use a Phillips head screwdriver to remove six (6) screws from ingress barrier if applicable.



2. Open the ingress barrier from the enclosure.

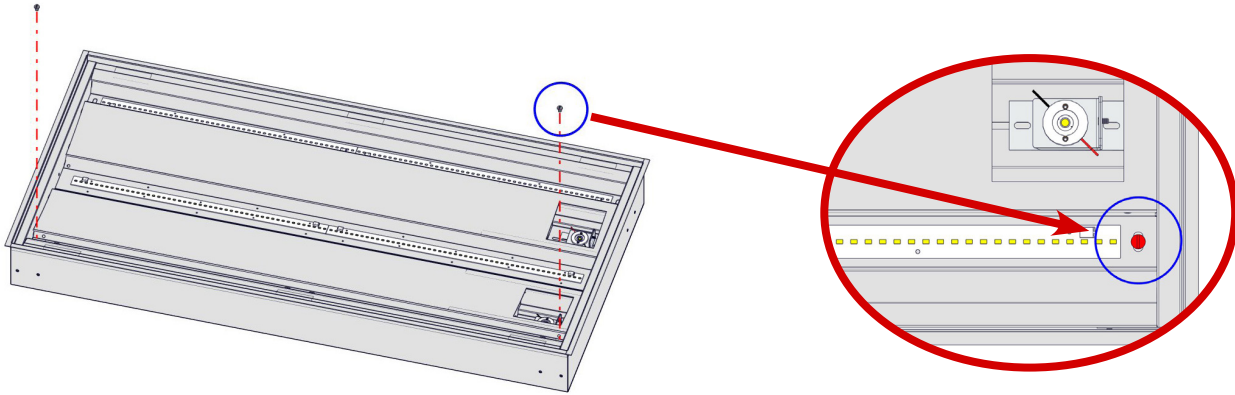


3. Take two (2) exam diffusers apart from the Eclipse insert.

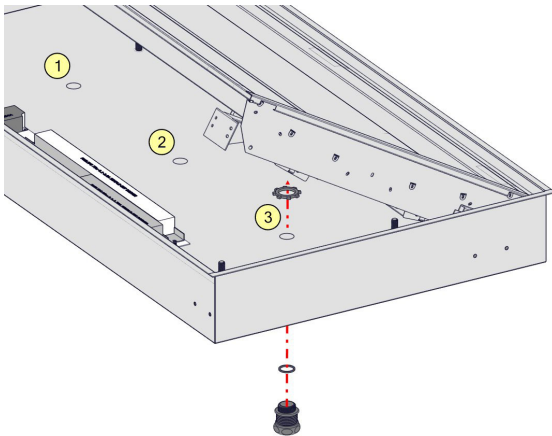


Installation Procedure

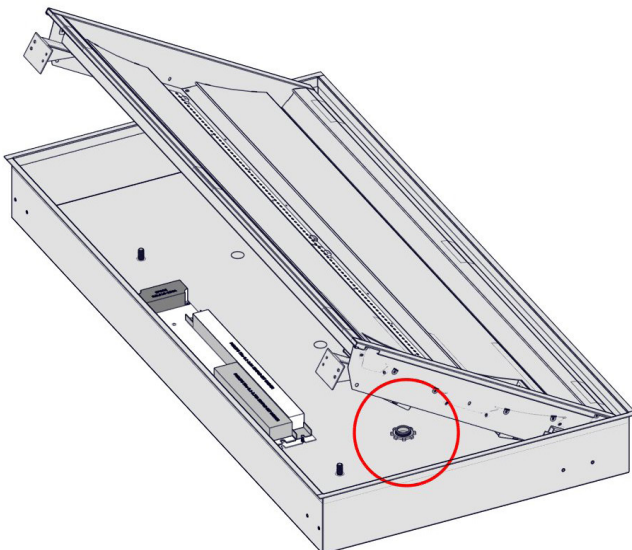
4. Remove two (2) screws from the Eclipse insert.



5. Swing open the Eclipse insert and attach the desired conduit to one of the inlet holes #1, #2, or #3.

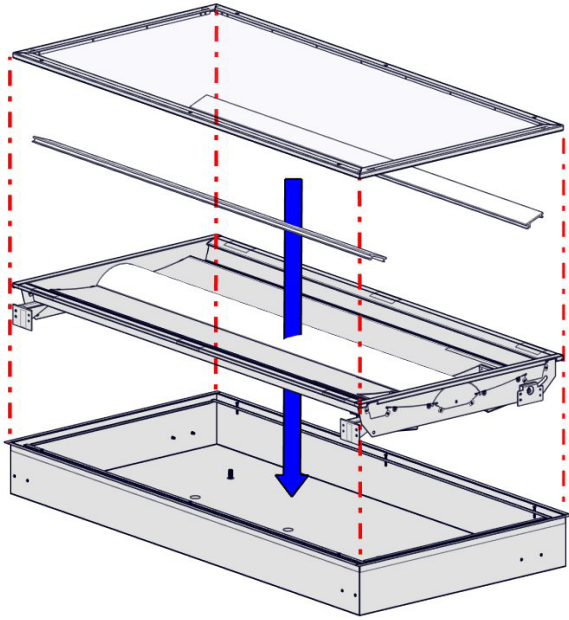


6. Connect the wires from the drivers as shown in the wiring diagram provided.



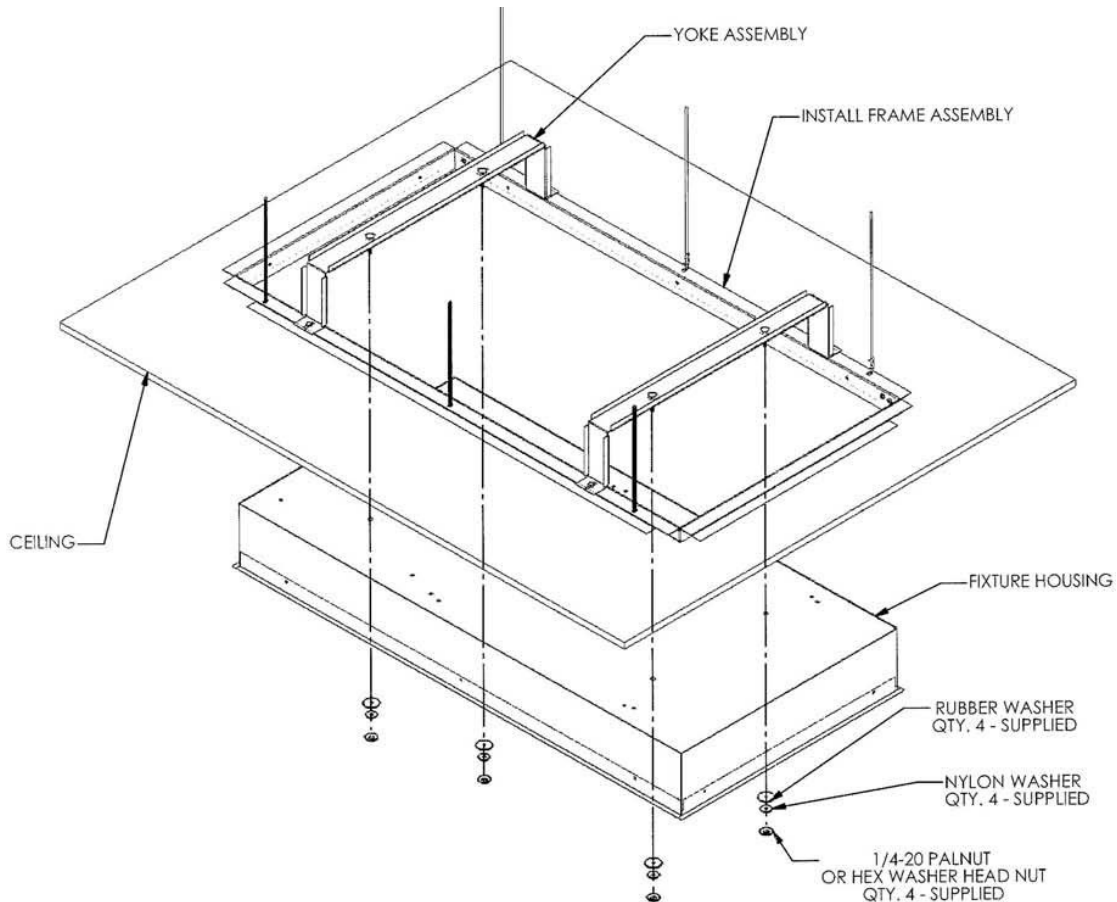
Installation Procedure

7. Reassemble the insert, diffusers, and the ingress barrier.



Installation Procedure

Frame Kit to Fixture Assembly



Note: The outlines shown on this instruction sheet are showing the set up of a 2 x 4 fixture. Your fixture may be a different size and may have only four mountings, but the assembly of the install frame and insertion of the housing is the same.

1. After install frame is secured to super structure, slide the fixture up into the opening. The carriage bolts protruding down from the yolk assembly will line up with holes on the back side of the fixture.
2. Once the fixture is in place, install the supplied rubber and nylon washers.
3. Secure the fixture with four (4) 1/4"-20 palnuts or hex washer head nuts (supplied).
4. Reattach the reflectors, covers, lamp fixture, and replace the louver assembly.

Disinfecting, Cleaning and Sterilization

Notice:

Damage due to improper cleaning

- Do not use alcohol, solvent or cleaning agents containing chlorine, bleach or scouring agents.
- Damage to the lens by concentrated disinfectant or solvent.
- Follow the manufacturers recommended mixing ratio.
- Use of incorrect cloths may scratch lens.

Notice:

A dirty lens will reduce the illuminating power.

- Clean the lens regularly
- Spray and wipe disinfection are permitted.
- Clean the lens with a leather cloth soaked in cleaner
- Spray disinfectant in horizontal position.

Notice:

The local government regulations for disinfection must also be observed in addition to these instructions.



Warranty Policy - Lighting Products

Architectural Lighting Solutions (Solar Series, Skyline Series, Lunar Series, LightMaster)

Amico Lights Corporation warrants its products against defective materials and workmanship for twelve (12) months from the date of shipment. Within this period, Amico Lights Corporation will repair or replace any part on site or at the factory which is proven to be defective at Amico Lights Corporation's cost.

Furthermore, Amico Lights Corporation will warrant its material to be free from defect for an additional period of four (4) years (five [5] years from the date of shipment). Within this period, Amico Lights Corporation will replace any part at no charge, which is proven to be defective. Shipping and installation costs after the first twelve (12) months will be borne by the customer.

The warranty applies to normal usage and does not apply to any product that has been subject to alteration, abuse, negligence, or use (including voltage and/or current) other than that for which the product was designed.

Medical Lighting Solutions (Mira Series, Gamma Series, Clarity Series, Magna Series)

Amico Lights Corporation warrants its products against defective materials and workmanship for twelve (12) months from the date of shipment. Within this period, Amico Lights Corporation will repair or replace any part on site or at the factory which is proven to be defective at Amico Lights Corporation's cost.

Furthermore, Amico Lights Corporation will warrant its material to be free from defect for an additional period of four (4) years (five [5] years from the date of shipment). Within this period, Amico Lights Corporation will replace any part at no charge, which is proven to be defective. Shipping and installation costs after the first twelve (12) months will be borne by the customer.

The spring arms for the above mentioned are warranted for a period of twelve (12) months. The warranty for the spring arms shall include parts and labor and shall commence from the date of shipment.

The warranty applies to normal usage and does not apply to any product that has been subject to alteration, abuse, negligence, or use (including voltage and/or current) other than that for which the product was designed.

Amico Lights Corporation shall not be liable for incidental or consequential damages resulting from the use of the equipment.

All claims for warranty must first be approved by Amico Lights Corporation. A valid Return Goods Authorization (RGA) number must be obtained from Amico Lights Corporation prior to commencement of any service work. Warranty work which has not been pre-authorized by Amico Lights Corporation will not be reimbursed.

Notes:

www.amico.com

Amico Lights Corporation | www.amico.com

55 East Wilmot Street, Richmond Hill
Ontario, L4B 1A3, Canada

Toll Free Tel: 1.877.462.6426
Toll Free Fax: 1.866.440.4986
Tel: 905.764.0800
Fax: 905.764.0862
Email: info@amico.com