

LightMaster Control System



Amico

LightMaster Control System

Designed for Healthcare

Say goodbye to guesswork and hello to an effortless and hassle-free lighting experience with LightMaster. Whether you're a clinician, patient, or visitor, the system allows for precise control of specific light functions within your area of the room. The customizable LightMaster Keypad, is available with either a mylar cover or digital LCD display, both of which can be tailored to your lighting needs in each of the three zones. With seamless communication between all three keypads, the pillow speaker, and the nurse call system, the LightMaster provides a harmonious and uninterrupted lighting experience.

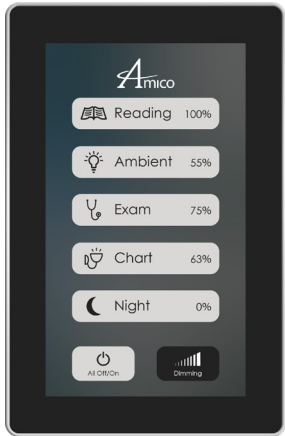
Multifunction Keypad

- Fully sealed **mylar cover** for infection control
- Backlit icons & dimming indicators
- Seamless communication between up to three keypads
- Customizable scenes, text & icons
- Nurse call & pillow speaker integration
- Low-voltage for user safety
- Single gang keypad for easy installation
- **Suitable for Behavioral Health applications** with tamper-resistant, anti-ligature* and impact-resistant design



Digital Multifunction Keypad

- 4.3" IPS backlit **LCD display**
- Smartphone-like features for added user experience
- Seamless communication between up to three keypads
- Customizable scenes, text & icons
- Nurse call & pillow speaker integration
- Low-voltage for user safety
- Single gang keypad for easy installation
- Fully sealed & gasketed for infection control



*Tamper-resistant, anti-ligature security sealants shall be used to seal gap between keypad and the mounting wall. Failure to do so will allow keypad to become a ligature point. Refer to install manual for recommended sealants.



Clinical Zone



Patient Zone



Visitor Zone

Enhance Clinical Workflow

Designated controls for the healthcare provider can be strategically positioned in the room to maximize clinical workflow and minimize patient disruptions.

Elevate the Patient Experience

Coordinated integration between lighting and pillow speaker controls so patients can control mood and atmosphere from the comfort of their bed.

Improve Visitor Satisfaction

Ensure the health and well-being of loved ones by providing access to personalized lighting controls that offer a patient-and-family-centered approach to healthcare.

Clinical Workflow

Deliver High-Quality Patient Care

The LightMaster Control System is designed to improve productivity so healthcare workers can deliver the highest quality care possible. The clearly labeled keypad eliminates confusion, while multiple keypad locations optimize clinical workflow and reduce task redundancy. So, whether it's a middle-of-the-night bedside check or an emergency examination, clinicians can easily control the right lighting function at the right time with the touch of a button.



5 LIGHTING FUNCTIONS
Control up to five lighting functions on one single-gang keypad.



BACKLIT ICONS
LED indicators illuminate lighting functions, so they are easily identified in the evening hours.



DIMMING
Dimming indicators allow users to adjust the lighting to their desired brightness.



NURSE CALL / PILLOW SPEAKER INTEGRATION
Nurse call and pillow speaker integration for added convenience.



INFECTION CONTROL
Easy cleaning and infection control are top priority with both the seamless mylar overlay and sealed & gasketed digital display.



THREE KEYPAD LOCATIONS
Up to three keypads can be installed in multiple rooms.

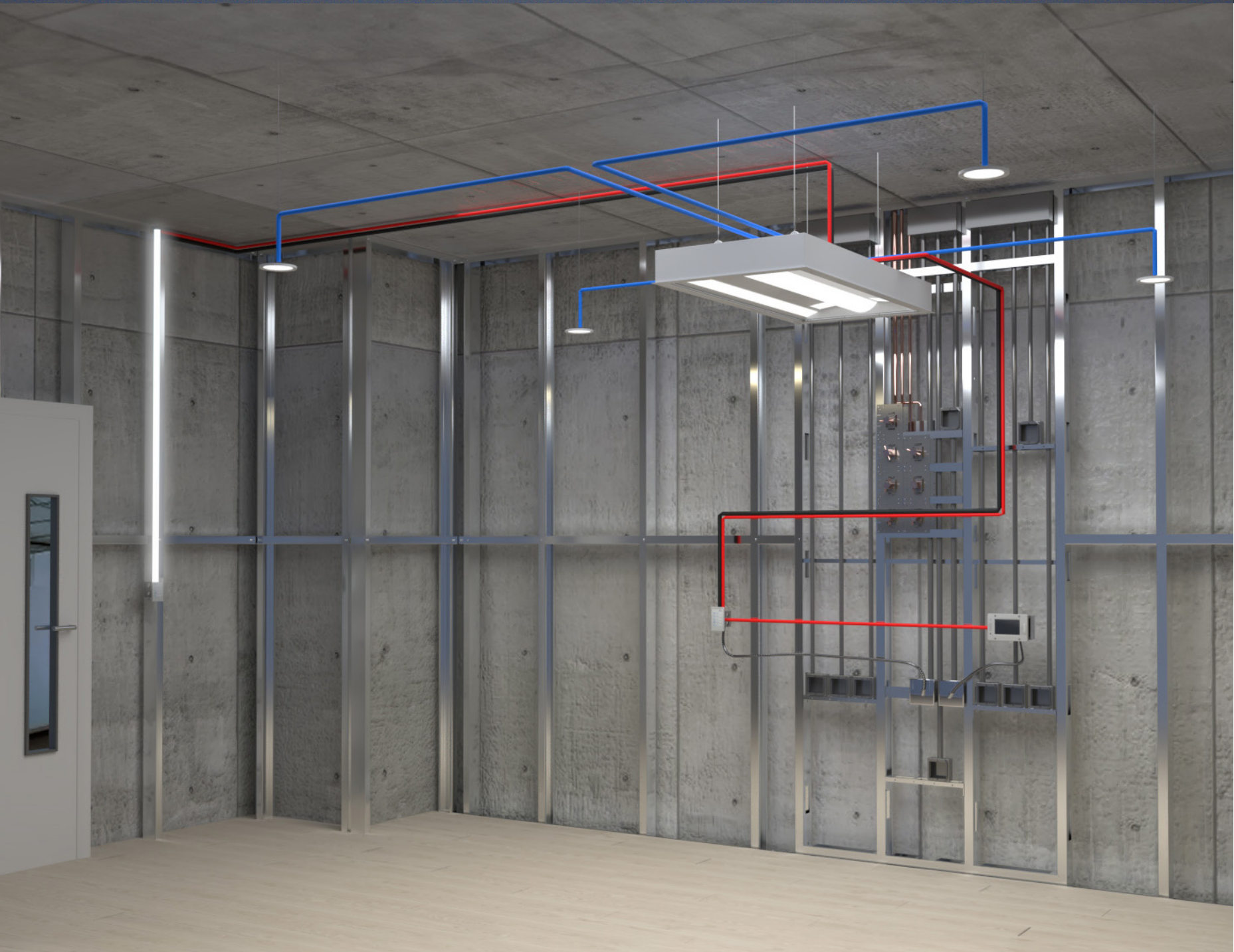


Suitable for all Areas of the Hospital Environment

From the patient room to the operating theater, the LightMaster Control System can be used in any space within the hospital environment.

- Patient Room
- ICU
- Exam Room
- Operating Room
- Trauma Room

Installation



Independent Control System

The LightMaster Controller is a stand-alone system that offers a localized solution for each patient room.

Independent controls provide a value engineering solution that reduces the costs associated with installation and labor.

Streamline the Installation Process

Simplify the installation process with a control solution engineered to meet the unique needs of the healthcare environment. The LightMaster Controller offers a five-channel relay with dimming to consolidate up to five lighting functions in the patient room onto one single gang, low-voltage keypad. For quick and easy installation in the patient room, the LightMaster Controller can be pre-installed into an Amico fixture at the factory, saving time and reducing labor costs.

LightMaster Controller

- Five-channel dimming
- Dedicated power supply
- Eliminate the need for a low-voltage controller
- Comes pre-installed in Amico fixture
- Controls up to five lighting functions in the room
- Compatible with a broad range of luminaires



Five Channel Relay

Independently control up to five lighting functions and brightness in the room from the five-channel relay with dimming.

Plug-and-Play Design

Pre-install the LightMaster LVC five-channel relay into an Amico Fixture at the factory to simplify installation in the patient room.

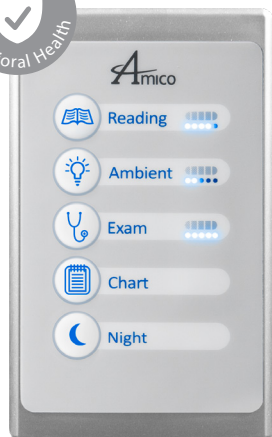
Low-Voltage Interface

The LightMaster Controller's low-voltage interface eliminates the need for a free-standing LVC in the room.

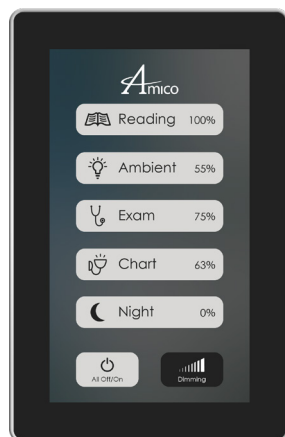
Secondary Controller

The secondary controller complements the LightMaster by seamlessly handling critical power, ensuring uninterrupted operations with tailored load distribution for optimal functionality.

The LightMaster Series



Multifunction Keypad



Digital Multifunction Keypad



LightMaster Controller

Technical Specifications

Multifunction Keypad	Digital Multifunction Keypad
Input Voltage 120 V/277 V, 50/60Hz	
Output Voltage 120 V/277 V, 50/60Hz	
Maximum Load 2.5 Amps Resistive, 1.8 Amps Ballast at 120 V, 0.975 Amps Resistive, 1.0 Amp Ballast at 277 V	
Low Voltage Circuit 5VDC, 200 mA	Low Voltage Circuit 12VDC, 300 mA
Operating Temperature 32-176°F / 0-80°C	
Master Controller Dimensions L 7" x W 2" x H 1.1"	
Keypad Dimensions Single Gang	
Secondary Controller Dimensions L 4.5" x W 2.6" x H 1.25"	Power Supply Dimensions L 5.6" x W 1.6" x H 1.3"



To learn more about the
LightMaster Control System visit:
www.amico.com/lights

Amico Lights Corporation
122-B East Beaver Creek Road, Richmond Hill, ON L4B 1G6, Canada
Toll Free Phone: 1.877.462.6426 | Toll Free Fax: 1.866.440.4986
Tel: 905.764.0800 | Fax: 905.764.0862
Email: alt-sales@amico.com | www.amico.com

