

# Lighting Solutions



Amico





## Patient Room

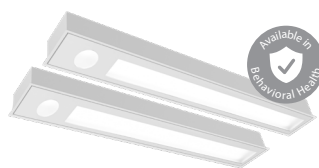
Amico offers an extensive range of patient room lighting solutions to complement any patient room design. These multifunctional fixtures merge architectural aesthetic with exceptional lighting performance to improve patient comfort and maximize clinical performance.



**Skyline Overbed**  
Skyline Series



**2x4 Light**  
Solar Eclipse Series



**Duo Med**  
Solar Series



**Night Light**  
Lunar Series



**Slimline Overbed**  
Skyline Series



**2x2 Light**  
Solar Eclipse Series



**Linea LED Light**  
Linea Series



**Crescent Night Light**  
Lunar Series

## Lighting Controls

Streamline clinical workflow and personalize the patient experience with intuitive, user-friendly controls.

**Now in Digital!**



**LightMaster  
Multifunction  
Keypad**



**Nova  
Wall Control  
Keypad**



**Nova  
Remote  
Control**

# Surgical Suite

Amico's specialized surgical luminaires provide flawless visibility in the operating room with precise and uniform illumination, proper color rendering, and superior shadow control. Available in white and green LED options.



Features White and Green Combination LED Surgical Luminaires



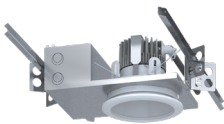
**2x4 Surgical Light**  
White or Green



**1x4 Surgical Light**  
White or Green



**2x2 Surgical Light**  
White or Green



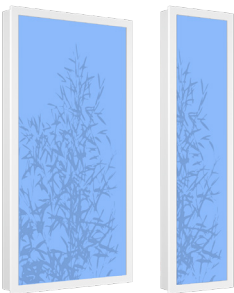
**MG Downlight**

# MRI Suite

Enhance the patient experience with lighting designed for the MRI environment. Our solutions are proven to reduce patient anxiety naturally for improved clinical outcomes.



**Illuminated Image Ceiling Panel**



**Illuminated Image Wall Fixture**



**Directional Recessed Downlight**



**Recessed Slot Light**

# Procedure & Exam

All of our procedure and exam lighting solutions are designed to deliver high-level illumination and superior shadow control to support clinicians with advanced visual acuity.



## Mira Series LED Exam & Procedure Light

- Offers up to 90,000 LUX of light
- Available in various mounting options



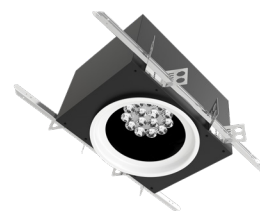
## Vega 80 LED Exam & Procedure Light

- Delivers 80,000 LUX of light
- Available in various mounting options



## Gamma 50 LED Exam Light

- Delivers 50,000 LUX of light
- Capacitive touch keypad



## Nova Motorized Exam Light

- 55,000 LUX at 10' ceiling height
- Fully recessed with 360° of rotation



Browse our complete portfolio  
of lighting solutions today!  
[www.amico.com/lights](http://www.amico.com/lights)

Amico Lights Corporation  
122-B East Beaver Creek Road, Richmond Hill, ON L4B 1G6, Canada  
Toll Free Phone: 1.877.462.6426 | Toll Free Fax: 1.866.440.4986  
Tel: 905.764.0800 | Fax: 905.764.0862  
Email: [info@amico.com](mailto:info@amico.com) | [www.amico.com](http://www.amico.com)