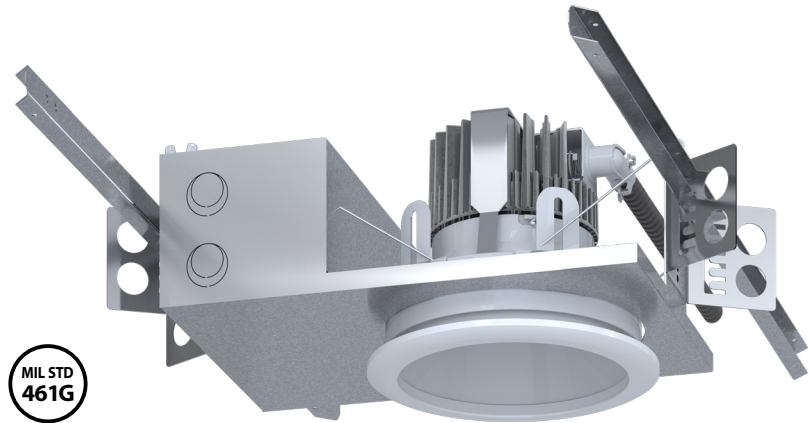


Description:

The Amico Leo Series MIL-Spec MG Downlight is a 6" recessed fixture designed to provide clinicians with optimal light output. Fitted with Hospital-grade finishes and providing up to 4000 Lumens of high-level illumination, a cool color temperature range of 3500 - 5000 Kelvins and standard CRI of 90, this fixture is suitable for multiple hospital environments. This product comes standard with an integrated RFI in-line filter, meeting emissions standards as per MIL-STD-461G.

Features:

- Lumen Output: 1000 - 4000 lm
- Hospital-grade material and finish
- Standard distribution option
- Medium-wide beam angle
- Serviceable from beneath the ceiling
- Suitable for Operating Room applications
- Sealed and Non-Sealed options
- Glare-free for visual comfort
- Finned heat sink for thermal management
- Complies with MIL-STD-461G standard for radiated and conducted emission regulations



Construction Material:

Housing: Cold-rolled steel

Finish: Optional white trim piece – Hospital-grade material and finish

Lens: Sealed, IP65 rated (Flush); Non-Sealed (Regressed)

High efficiency mixing chamber design with regressed diffused acrylic lens, optional clear high-impact acrylic with Flush Trim option

Drivers: High power factor constant current, 0.97 pf @ 120 V (Class 2, Class II)

Light Source: LEDs mounted on Aluminum Core PCB

RFI Filter: Power line RFI filter used to control conducted emissions

Specifications:

Voltage: 120 & 277 VAC

Wattage: 15 to 50 W

Light Output: 1000 - 4000 lms

Dimming Options: 0-10 Volts to 1%

Color Quality: Standard 90 CRI, contact factory for 80 CRI option

Color Temperature: 3500K - 5000K

Life of LEDs: L70 >72,000 hours

Listings: Certified to UL standards by ETL; Conforms to CSA standards as per ETL listing; Wet Locations option available; Conducted emissions controlled as per MIL-STD-461G

Warranty: Limited five (5) year warranty

Leo Series

MIL-Spec MG Downlight



Ordering Guide:

L - SDL6 - ML - - - - S - 0 - - - -

Input Voltage

Lumens

LED Color Temp

CRI Option

Distribution Option

Reflector Option

Trim Option

Flush Lens Option

Driver Option

For Example: L-SDL6-ML-120-30-L35-B-S-0-00-0-00
6" MIL-Spec MG Downlight, 120 Volts, 3000 Lumens, 3500K, 90 CRI, Standard Distribution, Semi-Specular Reflector, Regressed Trim, No Flush Lens (Regressed Trim), Standard 0-10V Dimming

Ordering Information:

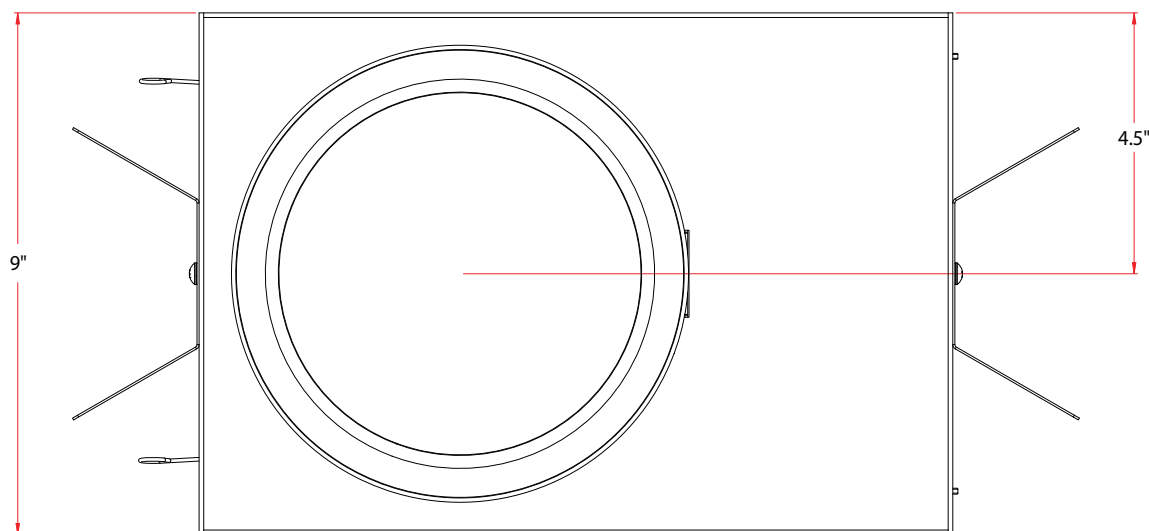
Series	Input Voltage*	Lumens†	LED Color Temp†	CRI Options†	Distribution Options†	Reflector Options†	Trim Options†	Flush Lens Options†	Driver Options†
L-SDL6-ML	120 120 Volts	10 1000 Lumens	L27 2700K	A 80 CRI	S Standard	0 Semi-Specular	00 Regressed Trim	0 n/a (Regressed Trim)	00 Standard 0-10V Dimming
	277 277 Volts	20 2000 Lumens	L30 3000K	B 90 CRI	†Option for beam angles		A1 Flush Trim, Aluminum, White	1 Clear High-impact Acrylic (Flush Trim)**	†Option for custom dimming/driver options
	†Option for 347 Volts	30 3000 Lumens	L35 3500K	†Option for custom CRIs		WL Flush Trim, Wet Locations		†Options for lens	
		40 4000 Lumens	L40 4000K			†Option for colours and trim types			
		†Option for custom outputs	L50 5000K						
†Option for colours									

NOTE:
† Contact factory for additional information regarding these options.
** IP65 valid for Clear High-impact Acrylic (Flush Trim) option only.

Leo Series MIL-Spec MG Downlight

Dimensions:

Bottom View



Cross Section

