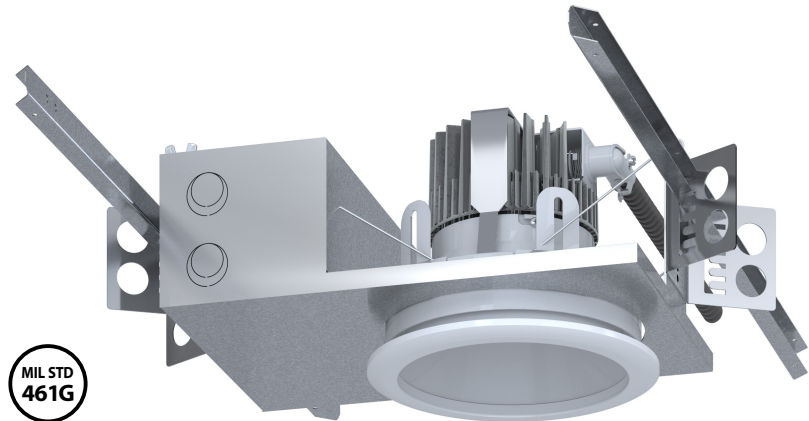


Description:

The Amico Leo Series MIL-Spec MG Downlight is a 6" recessed fixture designed to provide clinicians with optimal light output. Fitted with Hospital-grade finishes and providing up to 4000 Lumens of high-level illumination, a cool color temperature range of 3500 - 5000 Kelvins and standard CRI of 90, this fixture is suitable for multiple hospital environments. This product comes standard with an integrated RFI in-line filter, meeting emissions standards as per MIL-STD-461G.

Features:

- Lumen Output: 1000 - 4000 lm
- Hospital-grade material and finish
- Standard distribution option
- Medium-wide beam angle
- Serviceable from beneath the ceiling
- Suitable for Operating Room applications
- Sealed and Non-Sealed options
- Glare-free for visual comfort
- Finned heat sink for thermal management
- Complies with MIL-STD-461G standard for radiated and conducted emission regulations



Construction Material:

Housing: Cold-rolled steel

Finish: Optional white trim piece – Hospital-grade material and finish

Lens: Sealed, IP65 rated (Flush); Non-Sealed (Regressed)

High efficiency mixing chamber design with regressed diffused acrylic lens, optional clear high-impact acrylic with Flush Trim option

Drivers: High power factor constant current, 0.97 pf @ 120 V (Class 2, Class II)

Light Source: LEDs mounted on Aluminum Core PCB

RFI Filter: Power line RFI filter used to control conducted emissions

Specifications:

Voltage: 120 & 277 VAC

Wattage: 15 to 50 W

Light Output: 1000 - 4000 lms

Dimming Options: 0-10 Volts to 1%

Color Quality: Standard 90 CRI, contact factory for 80 CRI option

Color Temperature: 3500K - 5000K

Life of LEDs: L70 >72,000 hours

Listings: Certified to UL standards by ETL; Conforms to CSA standards as per ETL listing; Wet Locations option available; Conducted emissions controlled as per MIL-STD-461G

Warranty: Limited five (5) year warranty

Leo Series

MIL-Spec MG Downlight



Ordering Guide:

L - SDL6 - ML - - - - S - 0 - - - -

Input Voltage

Lumens

LED Color Temp

CRI Option

Distribution Option

Reflector Option

Trim Option

Flush Lens Option

Driver Option

For Example: L-SDL6-ML-120-30-L35-B-S-0-00-0-00
6" MIL-Spec MG Downlight, 120 Volts, 3000 Lumens, 3500K, 90 CRI, Standard Distribution, Semi-Specular Reflector, Regressed Trim, No Flush Lens (Regressed Trim), Standard 0-10V Dimming

Ordering Information:

Series	Input Voltage*	Lumens†	LED Color Temp†	CRI Options†	Distribution Options†	Reflector Options†	Trim Options†	Flush Lens Options†	Driver Options†
L-SDL6-ML	120 120 Volts	10 1000 Lumens	L27 2700K	A 80 CRI	S Standard	0 Semi-Specular	00 Regressed Trim	0 n/a (Regressed Trim)	00 Standard 0-10V Dimming
	277 277 Volts	20 2000 Lumens	L30 3000K	B 90 CRI	† Option for beam angles	† Option for aesthetics	A1 Flush Trim, Aluminum, White	1 Clear High-impact Acrylic (Flush Trim)**	† Option for custom dimming/driver options
	† Option for 347 Volts	30 3000 Lumens	L35 3500K	† Option for custom CRIs			WL Flush Trim, Wet Locations	† Options for lens	
		40 4000 Lumens	L40 4000K				† Option for colours and trim types		
		† Option for custom outputs	L50 5000K						
† Option for colours									

NOTE:
† Contact factory for additional information regarding these options.
** IP65 valid for Clear High-impact Acrylic (Flush Trim) option only.

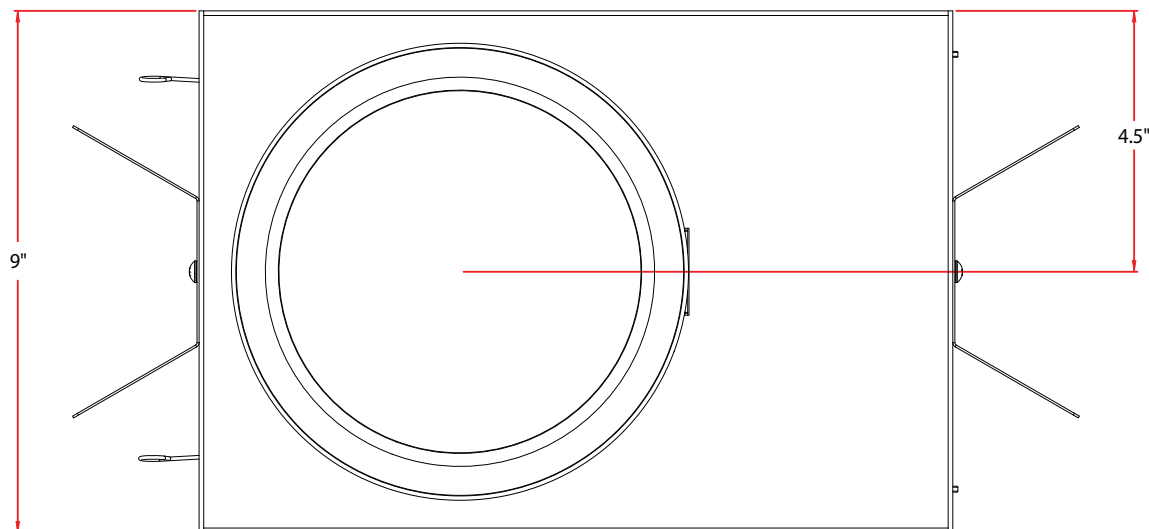
Lumen Multipliers:

CCT Multiplier	80 CRI	90 CRI
2700K	0.9	0.75
3000K	0.95	0.8
3500K	0.97	0.82
4000K	1	0.85

Leo Series MIL-Spec MG Downlight

Dimensions:

Bottom View



Cross Section

