

### Description:

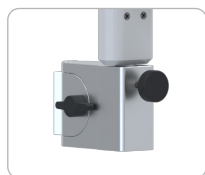
LEDs provide 50,000 lux of light for this new, innovative exam light. The Gamma 50 LED Light is maintenance-free and suitable for any type of exam room. There are five dimming levels with a simple switch on the head of the fixture. The articulating arm system offers simple positioning and movement of the light. Also, heat from the light is dissipated to the back of the head and away from the user.

### Features:

- Rail Mount
- Floor Stand
- Wall Mount
- Table Mount



### Mounting Solutions:



Rail Mount  
(Vertical)



Rail Mount  
(Horizontal)



Wall Mount

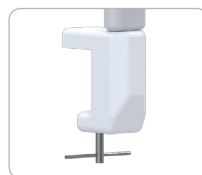


Table Mount



Floor Stand

### Specifications:

**Light Head Diameter:** 8 in

**Light Intensity @ 0.5m:** 50,000 Lux

**Light Beam Diameter @ 0.5m:** D10 - 18 cm, D50 - 11 cm

**Color Rendering Index:** 95+

**Color Temperature:** 4500K

**Light Head Weight:** 1.7 lbs

**Brightness Control:** 50% - 100%

**Luminaire Body:** Polycarbonate and acrylonitrile butadiene styrene copolymer (PC & ABS)

**Number of LEDs:** 7

**Class of Protection:** Class II

**Electrical:** 100 - 240 VAC, 50/60Hz, 20 VA max

**Controls:** Capacitive touch control

**Arm System:** Internal spring balanced articulating arm

**Life of LEDs:** L70 50,000 hours

**Listings:** Conforms to AAMI STD ES60601-1, IEC STD 60601-1-6, IEC STD 60601-2-41; Certified to CSA STD C22.2 No. 60601-1 by Intertek

**Warranty:** Limited five (5) year warranty

Gamma Series

Gamma 50 LED Light

Procedure and Exam Light

Ordering Guide:

L - GA50 -

-

-

-

- 00

Arm Type

Mounting Type

Rail Type

Accessories

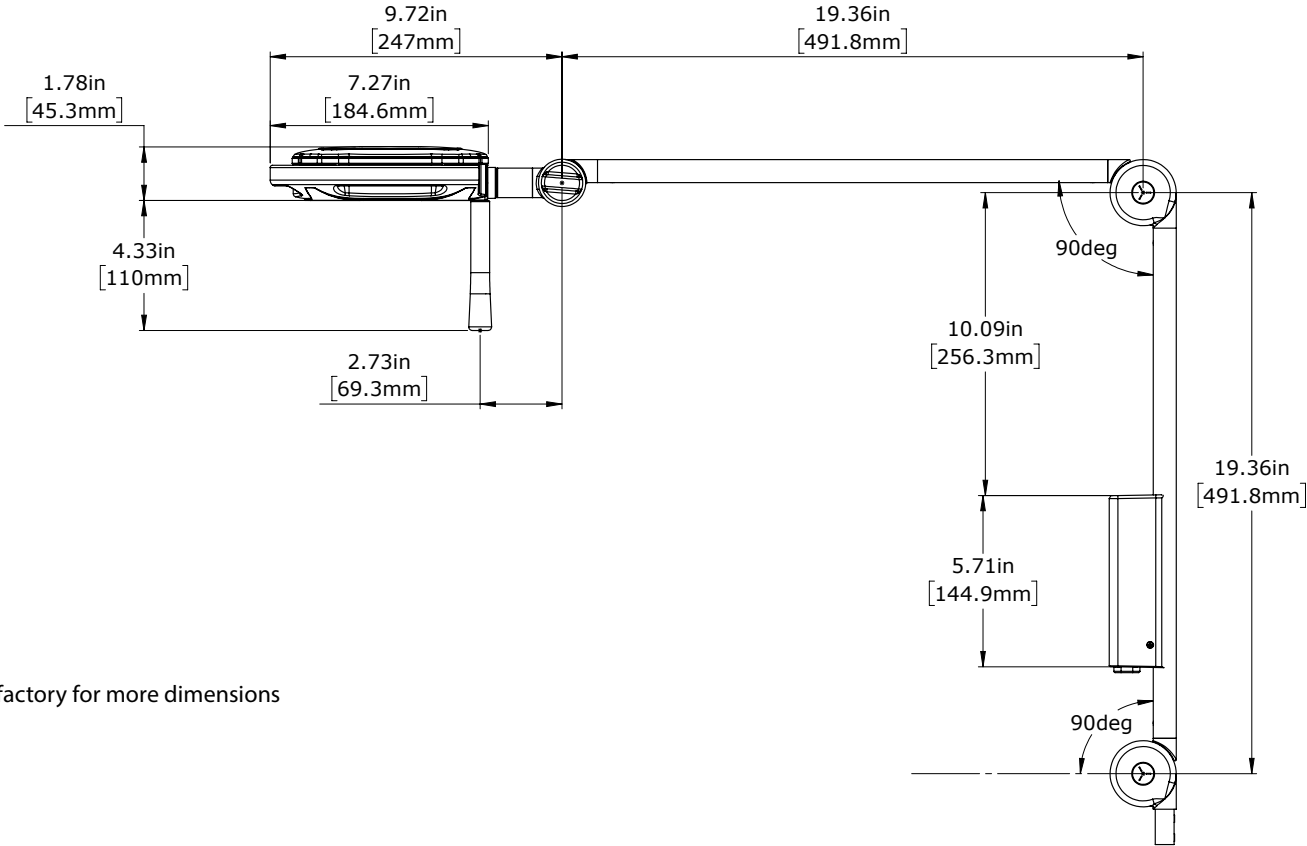
For Example: L-GA50-AR-RM-AH-00

Gamma Series, Gamma 50 LED Light, Articulating Arm, Rail Mount, Amico Horizontal Rail, No Accessories

Ordering Information:

Series	Arm Type	Mounting Type	Rail Type	Accessories
L-GA50	AR Articulating Arm	RM Rail Mount	00 No Rail	00 No Accessories
		FS Floor Stand	AH Amico Horizontal Rail	
		WM Wall Mount	AV Amico Vertical Rail	
		TM Table Mount	FH Fairfield Horizontal Rail	

Dimensions\*:



\*Contact factory for more dimensions