

Solar Series

Cleanroom Light - Universal

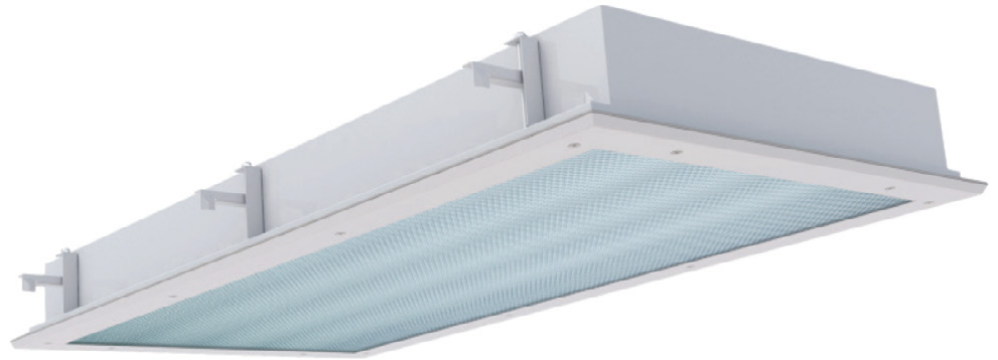
Description:

The CLU series by Amico is a specification-grade, LED recessed flanged IP65, IP66 IC-rated luminaire, for ISO Class 4 cleanrooms. Ideal for pharmaceutical manufacturing, food processing, Life Sciences and laboratories. For use in wet locations, insulated ceilings.

The Solar Series Cleanroom light is available in a 2x4, 2x2 and 1x4 model.

Features:

- Hospital grade material and finish
- Glare-free reflectors
- Optional emergency batter pack
- Optional Red LED array
- Seam welded enclosure
- Long lasting LEDs



Construction Material:

Housing: Precision formed, TIG welded, one piece 18 gauge cold rolled steel housing.

Mounting: Swing arm mounting brackets, with vertical adjustability, are used to mount the fixture against the ceiling. Brackets provide an improved continuous seal to plenum eliminating fixture distortion.

Ingress Barrier: One piece 60° beveled perimeter door frame, fabricated from 18 gauge, cold rolled steel with TIG welded corners. The door assembly is self centering by means of locating studs. It is retained by stainless steel aircraft cable when opened. Specialized, military grade, flat head, stainless steel, captive fasteners with integral silicone o-rings easily secure door frame to housing through use of floating cage nuts. Silicone o-rings offer superior performance and longer life over comparable teflon bushings. Protective stops prevent the fasteners from being over-tightened and bending the lens door frame. Custom shaped, extruded closed cell silicone gasketing is used throughout to ensure precise, redundant seals between door assembly, housing and plenum. Vulcanized corners ensure continuity of the seal on the frame gasket. Continuous retention-mounts mechanically secure and evenly distribute force against both gasketing and diffuser.

Lens: The standard lens assembly is made with a tempered safety glass sealed to the lens frame with a non-silicone sealant together with an overlay of a pattern #12 acrylic lens, mechanically secured.

Finish: White, polyester powder painted housing.

Specifications:

Voltage: 120-277 Volts; Consult factory for 347 Volts.

Dimming: 0 - 10 Volts and DALI options available.

Color Quality: 80 CRI (80-89).

Standard Color Temperature: 3500K, 4000K, 5000K (contact factory for optional red LED array).

Life of LEDs: L80>50,000 hours.

Listings: Approved to CSA and UL standards. UL listed for wet locations, insulated ceilings. IP65 & IP66.

Warranty: Limited five (5) year warranty.

Solar Series Cleanroom Light - Universal

Ordering Guide:

L - CLU -

Size (W x L)	Voltage	CCT	CRI	Housing Construction
14	120	30	8 80-89	A Stainless Steel (#304 Painted) B Aluminum (.050 Painted) C Plenum Access with Silicone Gasketing
22	277	35		
24	347	40		
		50		

Size	Nominal Lumens	Input Power (Watts)	Temp Codes (XH only)	Door Frame	Lens	Options
1 x 4	A 2,600	25	T3C	A Stainless Steel (#304)	A Clear Acrylic	Driver A Dimming Addressable Digital (DALI) B Emergency Lighting Battery Pack - LED
	C 5,200	47		B Stainless Steel (#316)	B Clear Glass Tempered	Mounting C Mounting Plaster Frame Kit (Stainless Steel #316)
	D 7,800	75		C Aluminum (.063 Painted)	C .156 Acrylic - P19	D Mounting Swing Arm for 4" Deep Ceiling (Note: Housing Depth increases by 1.5" for Flange mount only)
	F 10,400	98		D Stainless Steel (#304 Painted)	D Prismatic Acrylic - P12 .125" Thick	Wiring E LED Red array - One Row F LED Red array - Two Rows
2 x 2	A 2,600	45	T3C	E Stainless Steel (#316 Painted)	E Clear Glass Tempered with Prismatic Acrylic Overlay	Approval Option N NSF - National Sanitation Foundation (Comes with NSF compliant finish only)
	B 3,900	59		F Prismatic Polycarbonate - P12	<i>† Occupancy/Motion Sensors and 1% dimming. Other options may be available, consult factory. Specifications and data subject to change without notice.</i>	
	C 5,200	80		G White Translucent Acrylic .080		
2 x 4	D 7,800	99	T3C		H White Translucent Polycarbonate	
	E 8,400	143				
	C 5,200	47				
	E 7,800	75				
2 x 4	F 10,400	98				
	G 15,000	147				

Red LED Array* Lumens (optional)			
Size	Nominal (Lumens)	Input Power (Watts)	
1 x 4	1 2054	54	
	2 4090	108	
2 x 2	1 1020	27	
	2 2045	54	
2 x 4	1 2045	54	
	2 4090	108	

*Contact factory for optional red LED array

Dimensions:

Size	A	B	C	D	E
1 x 4	49.7"	13.7"	4.9"	12"	48"
2 x 2	25.7"	25.7"	4.9"	24"	24"
2 x 4	49.7"	25.7"	4.9"	24"	48"