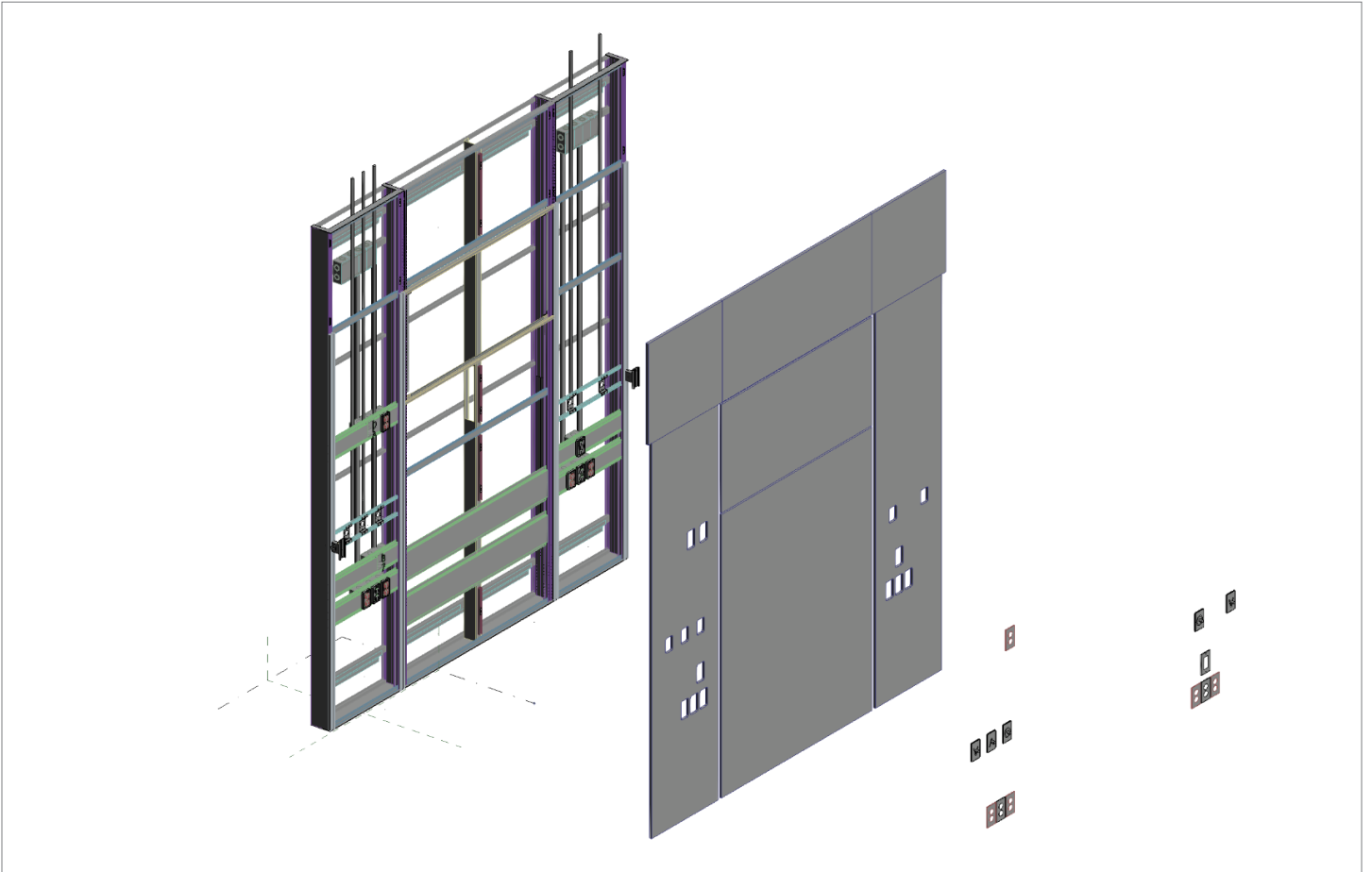


Installation Instructions

NuLook Serenity



Surface Mounted

Amico

User Responsibility


The installation instructions provided are for Amico standard products. Slight modifications to the installations may be required. The product shipped to the job site may not be exactly as shown on the installation drawings. See additional sheets for project specifics where required. Consult with project manager regarding custom elements on your project.


IMPORTANT: PLEASE READ CAREFULLY PRIOR TO START


- Review and understand all instructions before commencing work.
- Installation of this prefabricated system should conform to the local building codes.

All on-site preparations must be done prior to the delivery of the units. Please contact Amico to confirm and review all information listed below. Failing to do so may result in discrepancies/misalignments during installation.

Please Note These Keywords and Symbols:

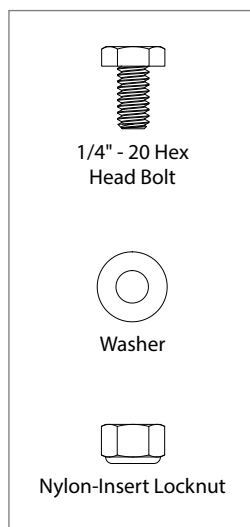
 **WARNING:** Steps where extra care should be taken to prevent injuries and damage.

 **NOTE:** Steps that point out helpful information.

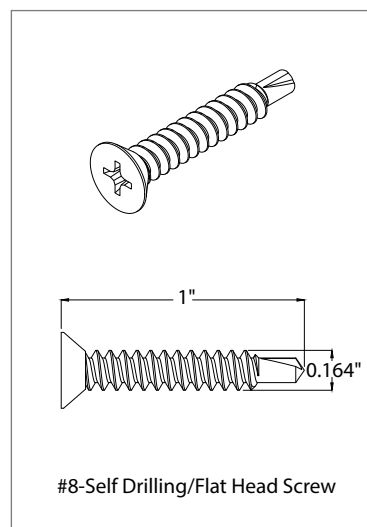
 **IMPORTANT:** Be sure to observe this instruction.

Hardware Provided by Amico

The following hardware is provided by Amico: **Hardware 1** is used for bolting frames together and **Hardware 2** is for mounting the vertical rails.



Hardware 1



Hardware 2

Preparation Before Installation

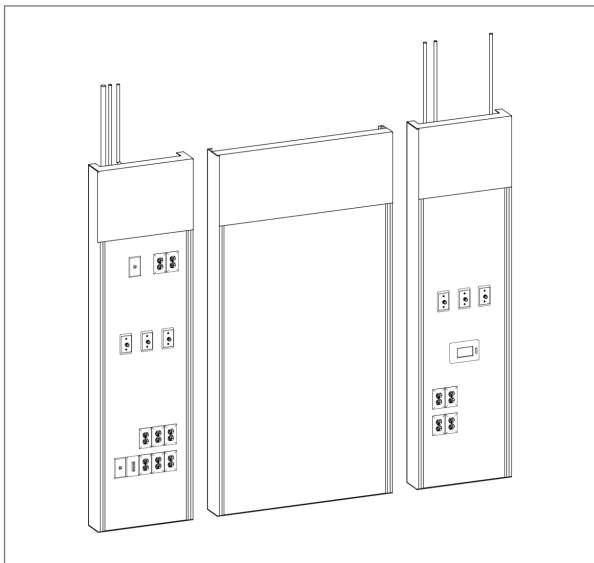
1. Review a copy of the final approved shop drawing(s) and/or submittal package. These documents will provide you with technical information specific to your installation, such as:

- Equipment types and quantities
- Room numbers and locations
- Shop drawings of each unit type
- Wiring diagrams and rough-in locations
- Blocking locations

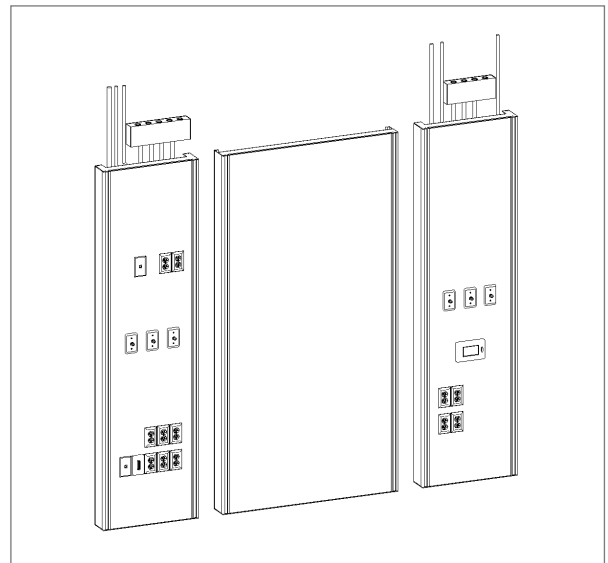
! IMPORTANT: Before installation of units, make sure the blocking required for mounting the prefabricated system is installed at locations indicated on shop drawings.

2. Locate the units from the shipping boxes that you wish to install. The contents of each shipping box are listed on the packing slip(s). Units are shipped in multiple sections. Please see pictures below for reference:

- Type A Design – Top access panels
- Type B Design – Full length panels



Type A Design
3 Section Unit with Top Access Panels



Type B Design
3 Section Unit with Full Length Panels

i NOTE: The number of sections in a unit is dependent on the design.

Installation

Please choose step 1 of installation based on the following methods:

Step 1A – Installation with 2 Sets of Hanging Brackets.

Step 1B – Installation with Ceiling Grid or Solid Ceiling in Place.

Step 1A – Installation with 2 Sets of Hanging Brackets

1. Mark two horizontal lines to locate drilling for mounting of hanging bracket on the wall (**Figure 1**):

- Under Ceiling Line:** Line below the ceiling to indicate where to mount top brackets.
- Above Floor Line:** Line above the floor line to indicate where to mount bottom brackets.

i NOTE: Please refer to the heights indicated on shop drawings.

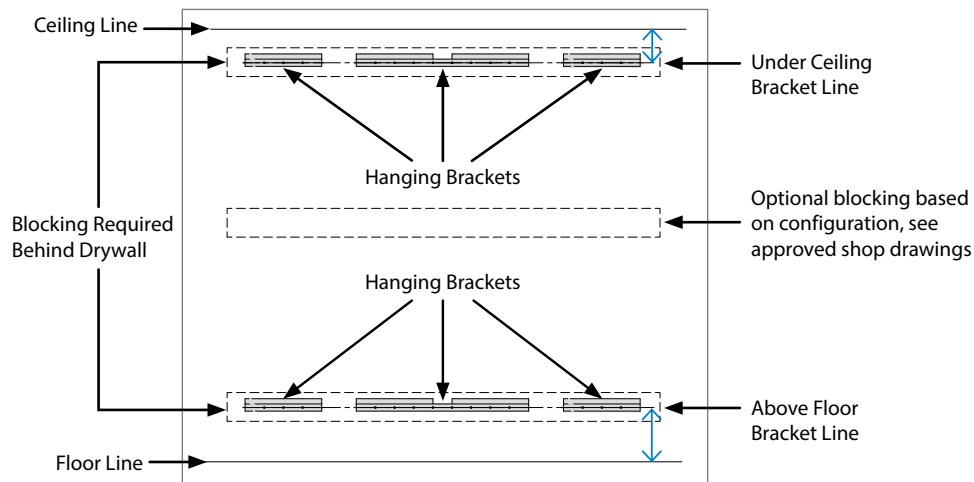


Figure 1

2. Set up hanging brackets as indicated in shop drawing provided with the units. Brackets are located at the top of each section for ease of identification.

i NOTE: Hanging brackets can be found taped to shipped frames.

3. Mount the brackets to the wall studs or blocking using screws, as per **setup** diagram (**Figure 2**). Use number of screws listed below:

- 19" to 32" wide section = 2 screws
- 32.1" to 48" wide section = 4 screws

i NOTE: Hardware used to mount bracket to the wall is supplied by others.

4. Remove access panels using tool provided (See **Page 7** for Panel Removal/Handling instructions).

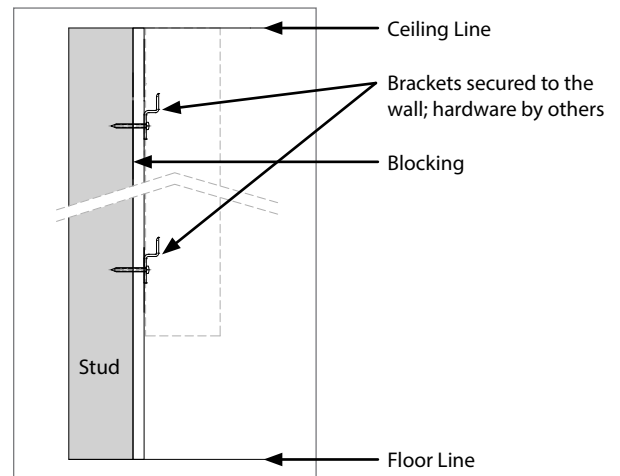


Figure 2: Setup

Installation

5. Align the sections and connect in 4 places along the vertical edges of each section, using the hardware provided (**Figure 3** and **Hardware 1**).

i NOTE: Hardware is shipped loose, and can be found in nurse call or low voltage box with a red hardware tag.

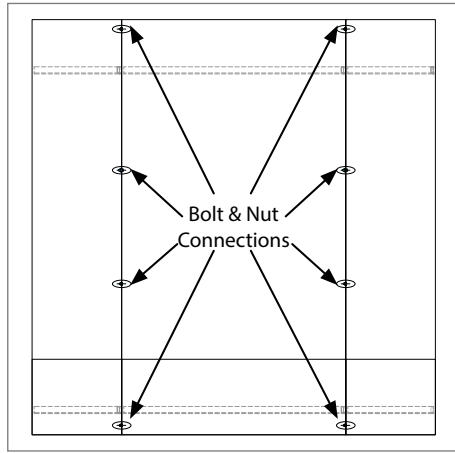


Figure 3

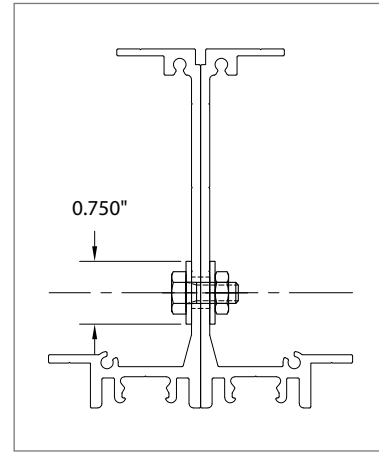


Figure 4

6. Lift the assembly and hang it over the brackets which are already installed on the wall.

i NOTE: Make sure the assembled unit is fully engaged into the hanging brackets at all locations (**Figure 5**).

7. Secure the unit to the hanging bracket by positive mounting into the headwall support bars.

i NOTE: The positive mount will be at the top hanging bracket location (**Figure 5** and **Figure 6**).

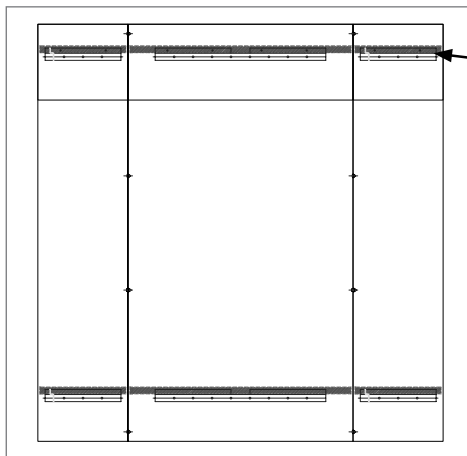


Figure 5

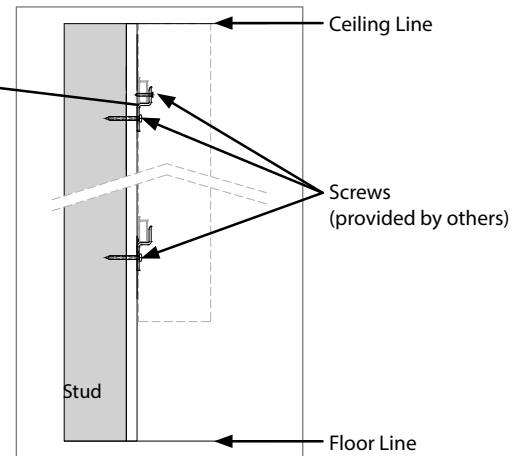


Figure 6

8. Make all electrical and piping connections.
9. Attach all removed items:
- Panels (must clip in properly where applicable)
 - Devices, extension rings and cover plates
 - Rails (must use **Hardware 2** provided to reinstall)
 - Accessories

! IMPORTANT: Do not overtighten the medgas cover plates.

Installation

Step 1B – Installation with Ceiling Grid or Solid Ceiling in Place

1. Remove panels from Headwall using tool provided (See **Page 7** for Panel Removal/Handling instructions).
2. Connect sections using nut and bolt connections (see Step 5 of **Installation Method Step 1A**).
3. Attach the hanging brackets to the headwall support bars designated for hanging brackets.

! IMPORTANT: Do not overtighten the screws – these screws will be tightened more once the unit is attached to the wall.

4. Set the unit in the final location on the wall.
5. Secure the unit to the wall through the hanging brackets on the top. Use the number of screws listed below:
 - a. 19" to 32" wide section = 2 screws
 - b. 32.1" to 48" wide section = 4 screws
6. Use hardware compliant to local building codes (provided by others) to mount brackets to the wall (**Figure 7**).

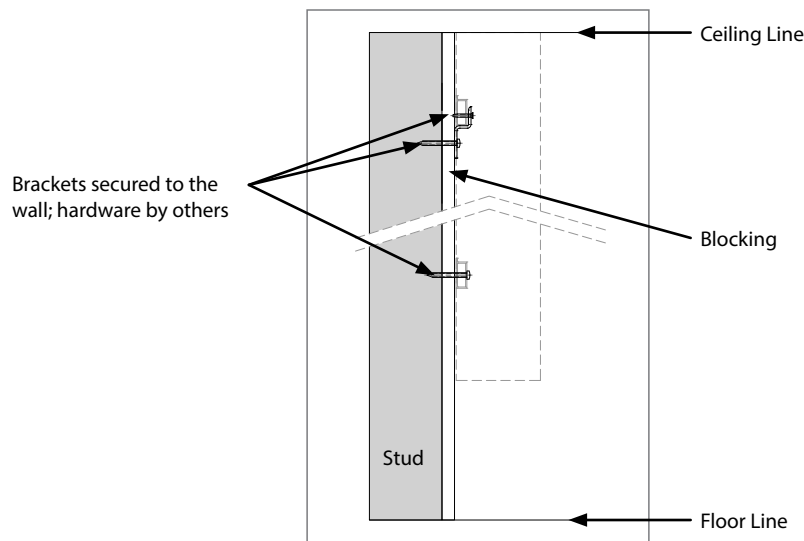
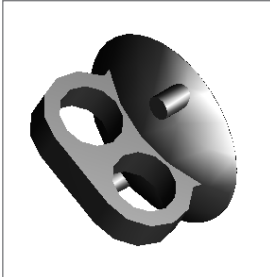


Figure 7

Panel Removal/Handling

Access Panels

1. Use the provided suction cup to remove the access panels (**Figure 8**). Be careful not to drop the panels.



Part #: W-X-LIFTER-0475

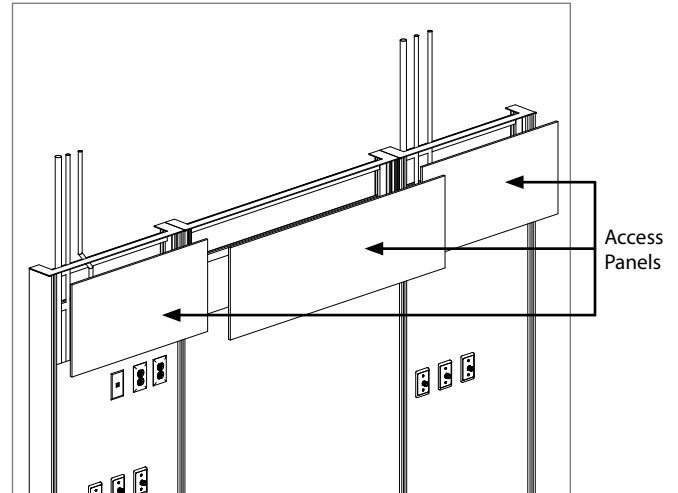


Figure 8

Panels with vertical rails and services

1. Remove vertical rails, where applicable:
 - Remove Bottom plate or Top plate
 - Remove Insert strip
 - Remove Screws
 - Remove Rail
2. Remove device cover plates where applicable.
3. Remove panels (using the provided suction cup).

WARNING:

- Stack panels face to face to prevent damage.
- Keep panels as flat as possible when handling or storing.
- Do not drag panels on other panels in order to prevent scratching or scuffing.
- Panels must be stored on a dry surface (never directly on the floor or directly on concrete).
- It is desirable to keep the panels in a controlled environment where the HVAC system is operating.

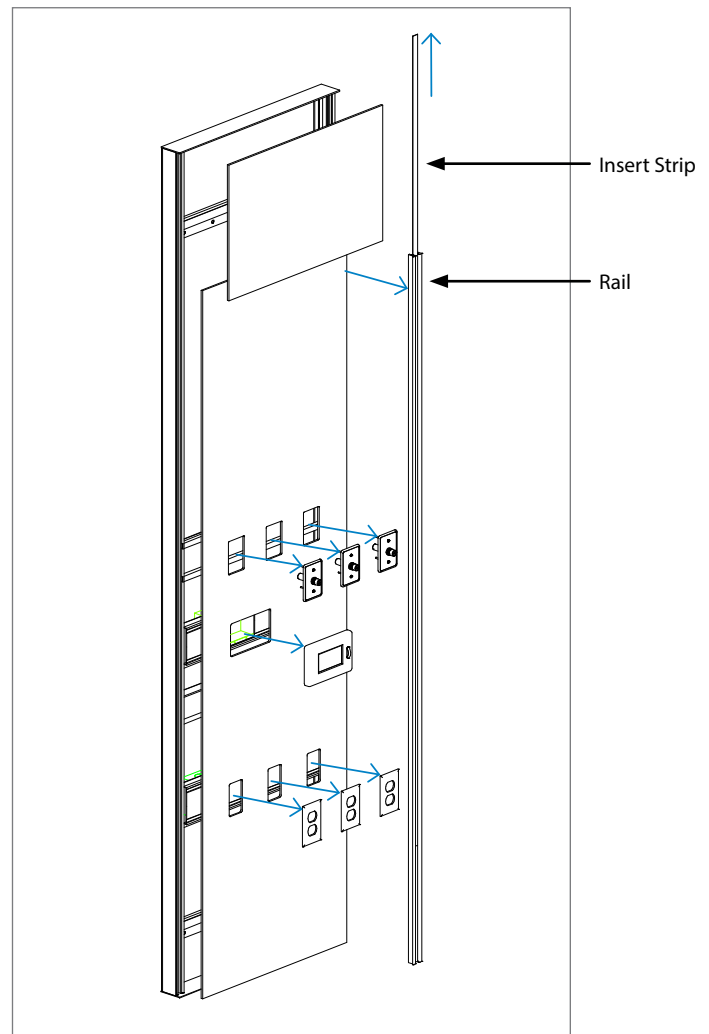


Figure 9

www.amico.com

Amico Corporation | 85 Fulton Way, Richmond Hill, ON L4B 2N4, Canada
600 Prime Place, Hauppauge, NY 11788, USA
Toll Free Tel: 1.877.462.6426 | Tel: 905.764.0800 | Fax: 905.764.0862
Email: info@amico.com | www.amico.com



US LISTED

