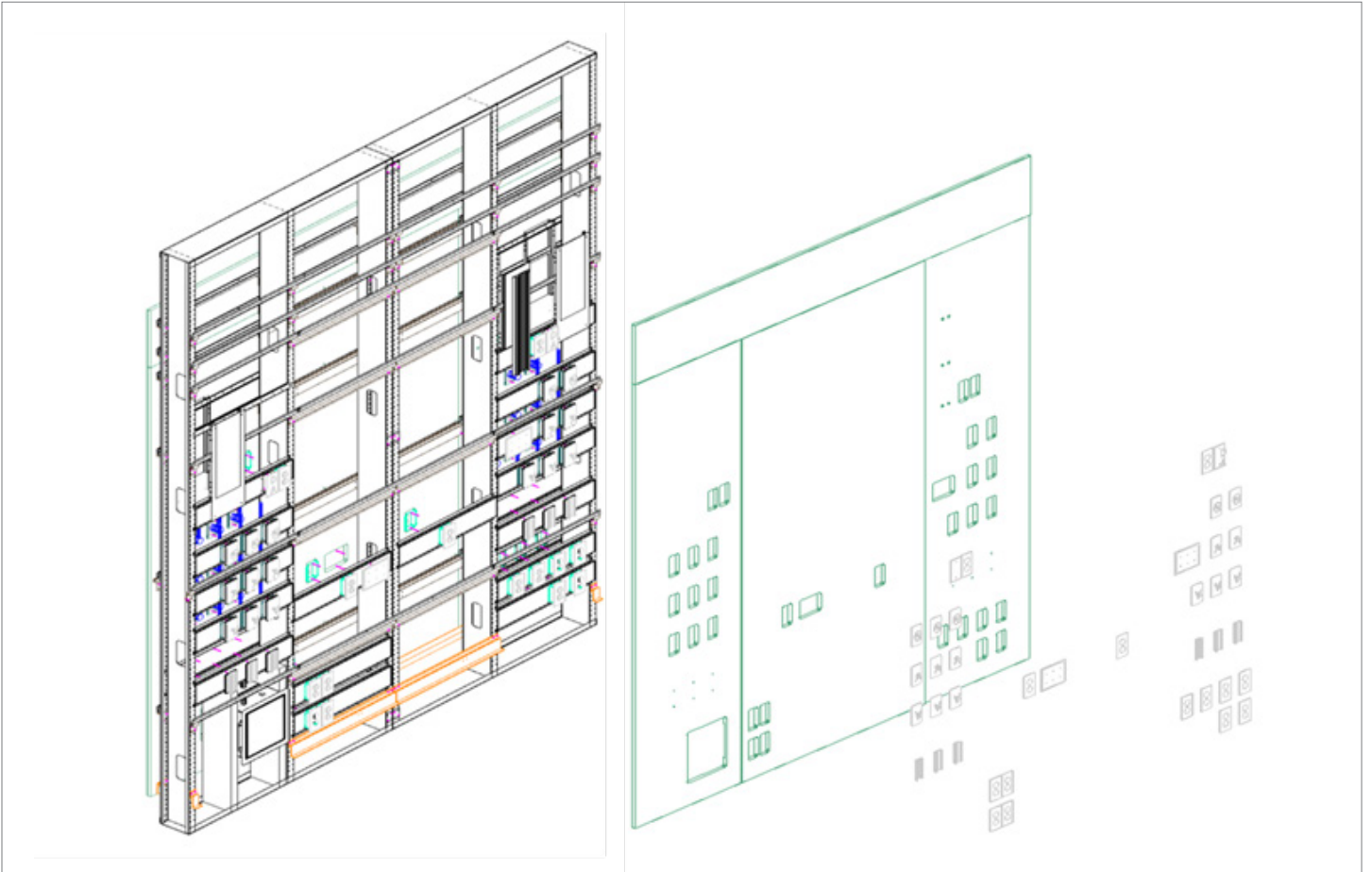


Installation Instructions

NuLook Serenity



Recessed

Amico

User Responsibility

The installation instructions provided are for the Amico standard products. Slight modifications to the installations may be required. The product shipped to the job site may not be exactly as shown on the installation drawings. See additional sheets for project specifics where required.

IMPORTANT: PLEASE READ CAREFULLY PRIOR TO START

- Review and understand all instructions before commencing work.
- Headwall installation should conform to the local building codes.

All on-site preparations must be done prior to the delivery of the headwall units. Please contact Amico to confirm and review all information listed below. Failing to do so may result in discrepancies/misalignments during installation.

Please Note These Keywords and Symbols:



WARNING: Steps where extra care should be taken to prevent injuries and damage.



NOTE: Steps that point out helpful information.



IMPORTANT: Be sure to observe this instruction.

Preparation Before Installation

1. Review a copy of the final approved shop drawing(s) and/or submittal package. These documents will provide you with technical information specific to your installation, such as:

- Equipment types and quantities
- Room numbers and locations
- Shop drawings of each unit type
- Blocking locations



IMPORTANT: Before installation of units, ensure rough-in opening meets dimensions in shop drawings.



WARNING: All wiring must be completed per the National Electrical Code and/or local electrical codes by a licensed electrician.

2. Some common tools not provided that may be required to complete the installation are:

- Cordless drill/driver with common drill or drive bits
- Hand tools (screwdrivers, wrenches, clamps, pliers, etc.)
- Laser- or bubble-level
- Ladder(s)

Hardware Provided by Amico

Hardware

- Joining plates will be pre-installed on stud frame sections in locations recommended by Amico.
- 4 screws required per joining plate.

! IMPORTANT: Joining plates labeled 'X' in this instruction, fasten frame sections to building studs (2 screws shipped on unit and 2 screws provided by others, per plate).

! IMPORTANT: Joining plates labeled 'Y' in this instruction, fasten frame section to frame sections (2 screws shipped on unit and 2 screws shipped loose, per plate).

i NOTE: Screws shipped loose can be found in nurse call or low voltage box with a red hardware tag.

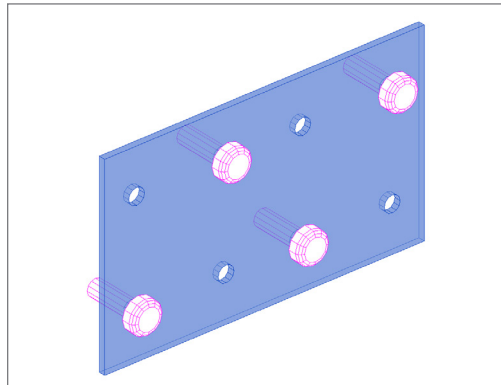


Figure 1: Hardware Diagram

i NOTE: Joining plates may be rotated on units during shipping (see **Figure 2**).

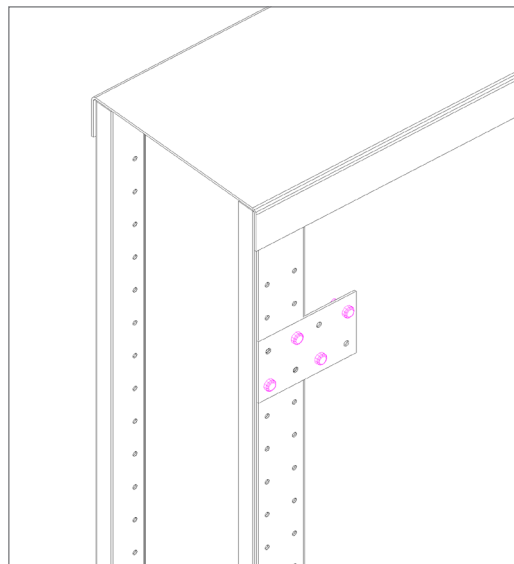


Figure 2: Rotated Installation of Joining Plates During Shipping

Preparation Before Installation

Preparation of Rough-in Opening (By Others)

Rough-in opening to measure unit width plus ½", and unit height plus 1" (see **Figure 3**). The final dimensions for your headwall will be noted on the approved shop drawings.

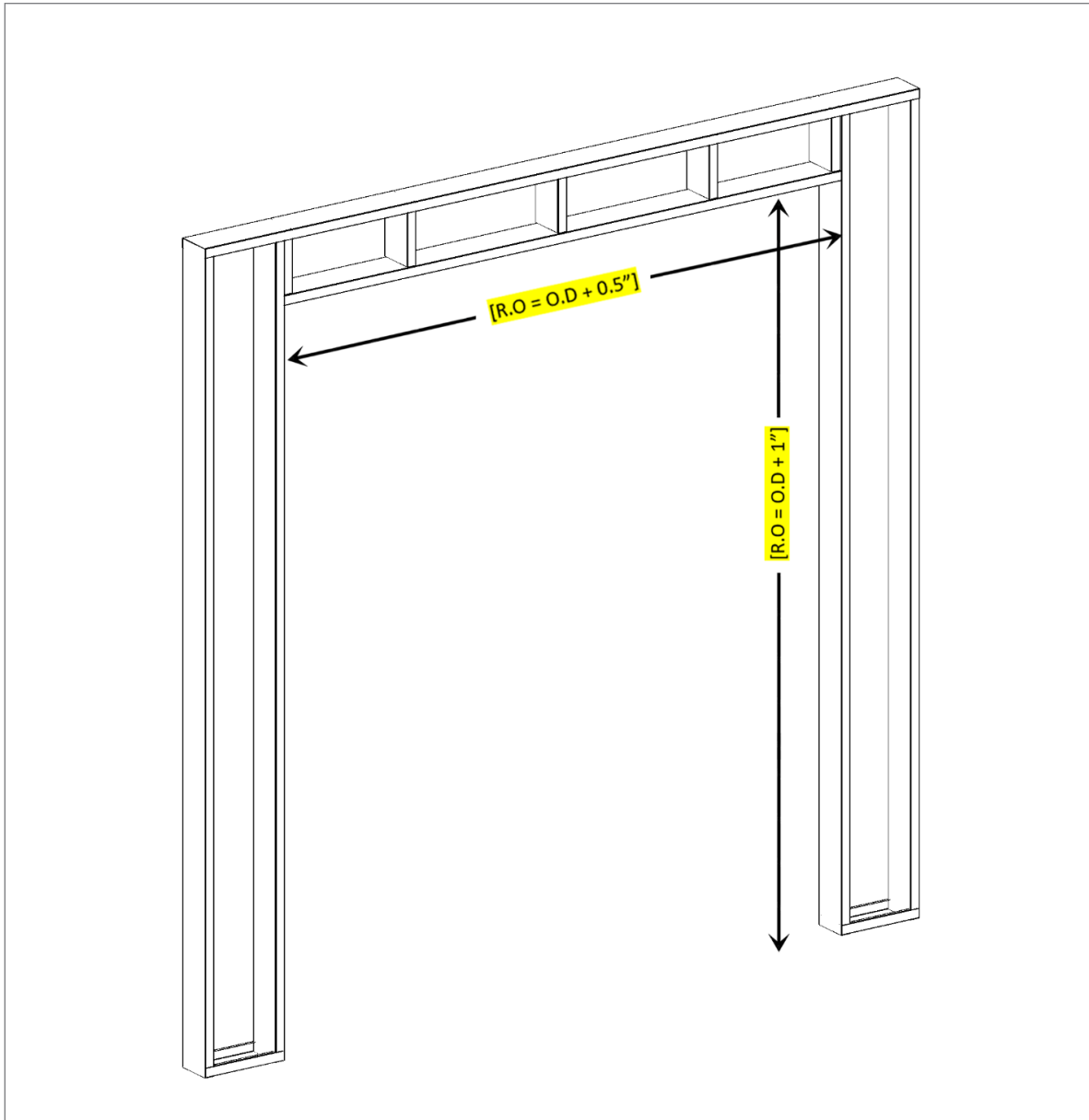


Figure 3: Rough-In Opening

Installation

Based on your headwall, choose step 1 of installation to follow:

Step 1A – Installation of Single Stud Frame Section.

Step 1B – Installation of Multiple Stud Frame Sections.

Step 1A – Installation of Single Stud Frame Section

! IMPORTANT: Please refer to the dimensions indicated on shop drawings.

1. Insert stud frame section into rough-in opening (see **Figure 4**).
2. Level stud frame section using tabs detailed below (see **Figure 4**).
3. Once level, ensure unit is plumb and secure it to the left and right building studs at plate locations labeled 'X', using hardware provided by others (see **Figure 4**).

! IMPORTANT: Panel gaps may appear if stud frame sections are not level and plumb.

4. Positively mount the stud frame section to floor and rough opening header (hardware provided by others).

! IMPORTANT: Do not force the base of the unit into any uneven or irregular surfaces in the floor.

5. Connect medical gases and electrical services per project specific details from the approved shop drawings.

! WARNING: Make the necessary high-voltage and low-voltage electrical connections by a licensed electrician.

i NOTE: Medical gases and electrical to terminate as per shop drawings.

6. Insulate and/or detail wall cavity as per project plans and specifications (provided by others).

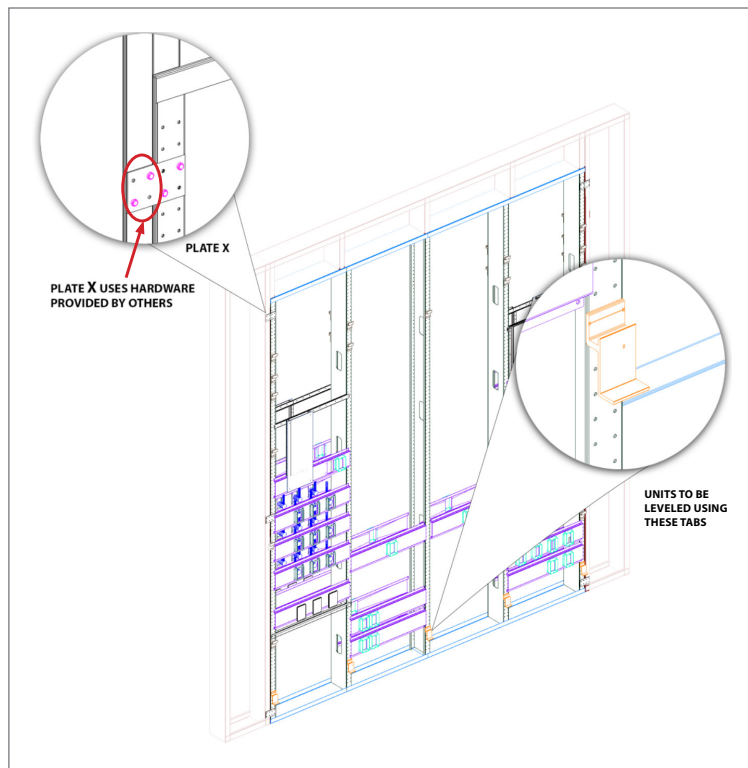


Figure 4: Single Stud Frame Installation Diagram

Installation

Step 1B – Installation of Multiple Stud Frame Sections

! IMPORTANT: Please refer to the dimensions indicated on shop drawings.

1. Insert stud frame sections into rough-in opening from left-to-right (see **Figure 5**).
2. Connect the stud frame sections at plate locations labeled 'Y' using provided hardware found in nurse call or low voltage box (see **Figure 5**).
3. Level all stud frame sections using tabs detailed in **Figure 4**.
4. Once level, ensure units are plumb and secure them to the left and right building studs at plate locations labeled 'X', using hardware provided by others (see **Figure 5**).

! IMPORTANT: Panel gaps may appear if stud frame sections are not level and plumb.

5. Positively mount stud frame sections to the floor and rough opening header (hardware provided by others).

! IMPORTANT: Do not force the base of the unit into any uneven or irregular surfaces in the floor.

6. Connect medical gases and electrical services per project specific details from the approved shop drawings.

⚠ WARNING: Make the necessary high-voltage and low-voltage electrical connections by a licensed electrician.

i NOTE: Medical gases and electrical to terminate as per shop drawings.

7. Insulate and/or detail wall cavity as per project plans and specifications (provided by others).

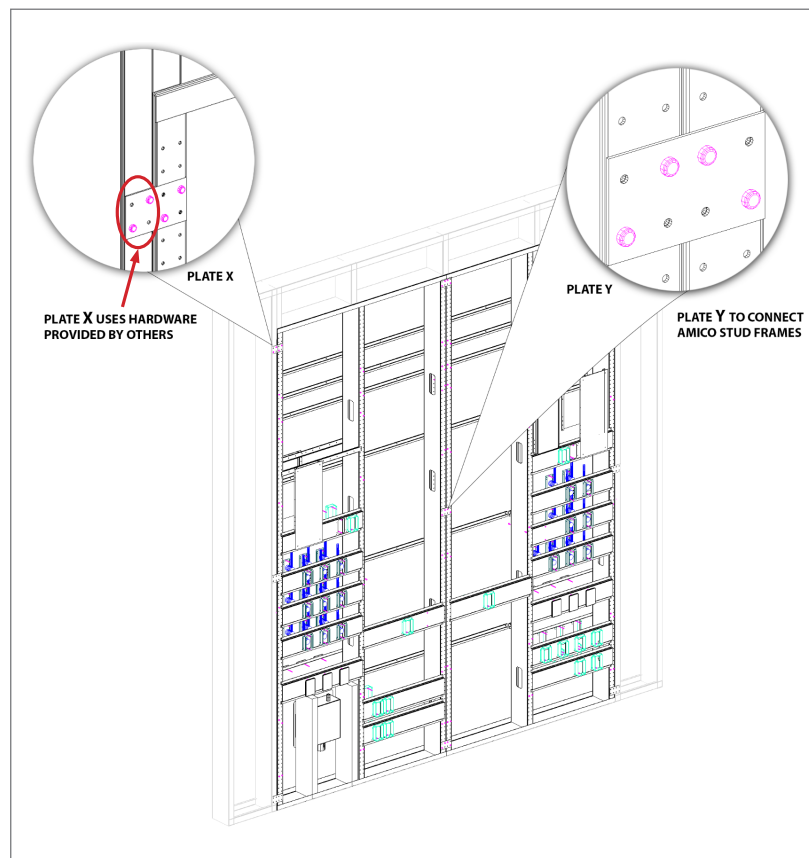


Figure 5: Multiple Stud Frame Installation Diagram

Installation

Step 2 - Drywall Installation (Provided by Others)

Drywall to be installed to the vertical sides of rough-in opening, as well as above and below Amico provided panels as per shop drawings and provided stud labels.

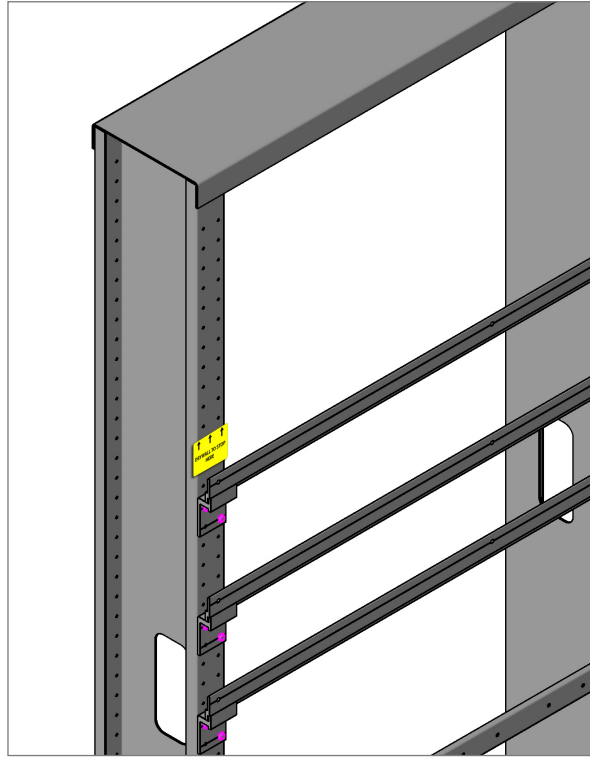


Figure 6: Drywall Installation Diagram

Installation

Based on your ceiling levels, choose step 3 of installation to follow:

Step 3A – Below Ceiling Line Panel Installation and Finishes.

Step 3B – At Ceiling Line Panel Installation and Finishes.

Step 3A – Below Ceiling Line Panel Installation and Finishes

1. Install panels from **BOTTOM** to **TOP**, and **LEFT** to **RIGHT**, via lift and drop using Z-clips (see **Figure 7**).

! IMPORTANT: Assembled panel system must terminate at least $\frac{1}{2}$ " below ceiling line for top panel row to be installed via lift and drop.

i NOTE: Project specific panel installation instructions may be provided. If necessary, please consult Project Manager.

2. Install all medgas outlets, electrical cover plates, and gaskets. The NuLook Serenity Recessed Headwall is now completely installed.

! IMPORTANT: Do not overtighten the medgas cover plates.

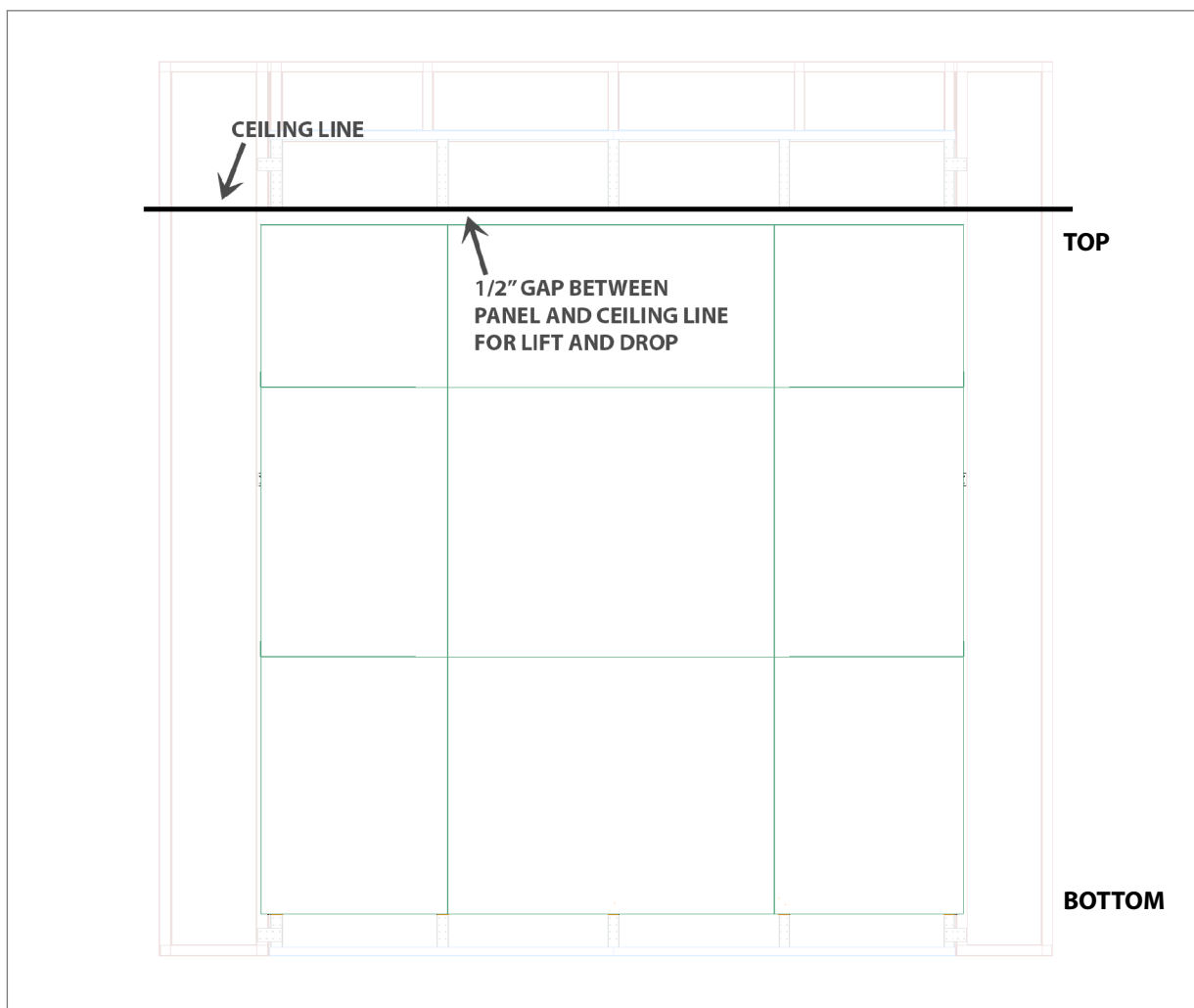


Figure 7: Below Ceiling Line Panel Installation and Finishes

Installation

Step 3B – At Ceiling Line Panel Installation and Finishes

1. Install all panels except for the top row from **BOTTOM** to **TOP**, and **LEFT** to **RIGHT**, via lift and drop using Z-clips (see **Figure 8**).
2. Install top row of panels via spring clips (see **Figure 8**).
 - i NOTE:** Project specific panel installation instructions may be provided. If necessary, please consult Project Manager.
3. Install all medgas outlets, electrical cover plates, and gaskets. The NuLook Serenity Recessed Headwall is now completely installed.
 - ! IMPORTANT:** Do not overtighten the medgas cover plates.

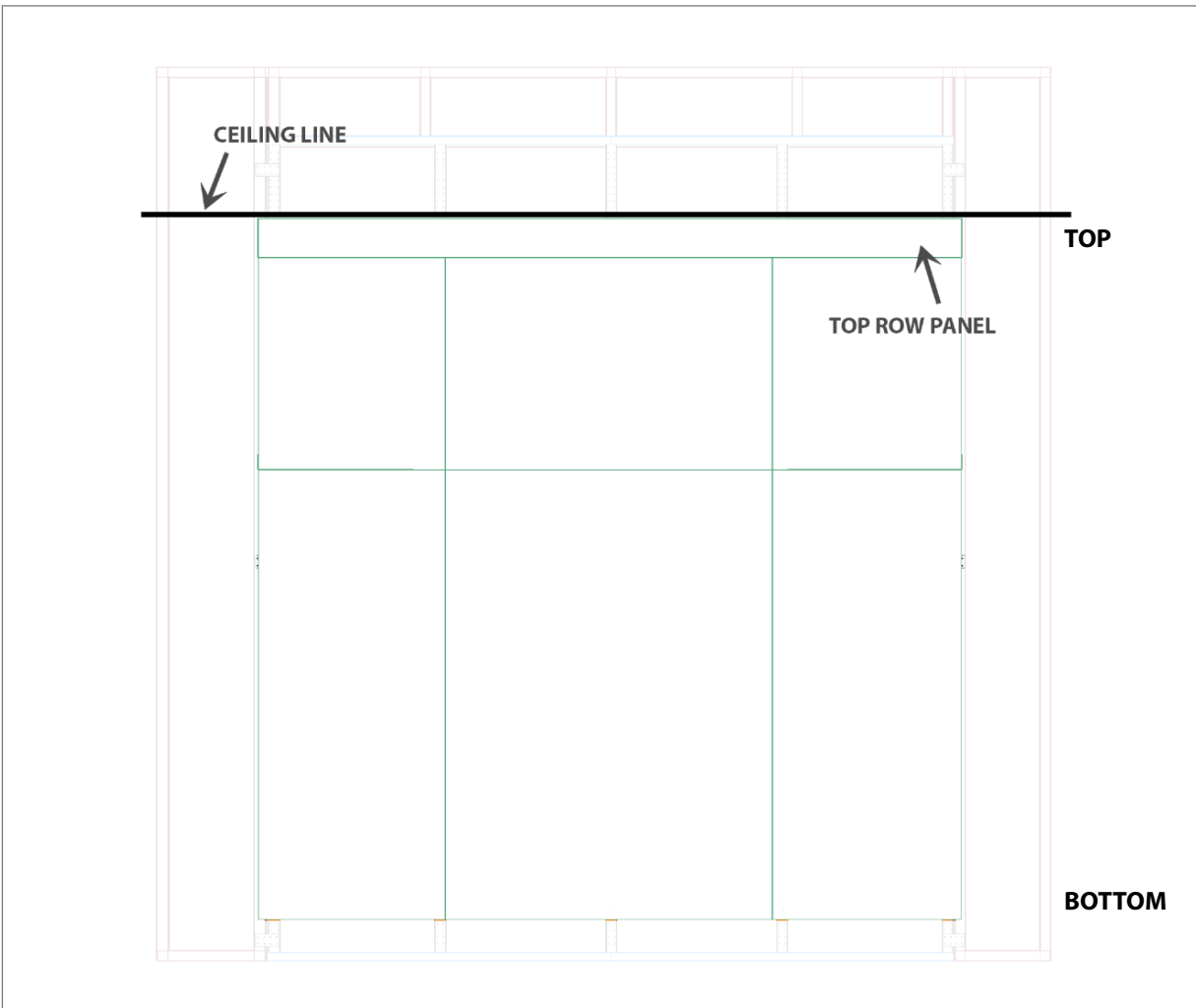


Figure 8: At Ceiling Line Panel Installation and Finishes

www.amico.com

Amico Corporation | 85 Fulton Way, Richmond Hill, ON L4B 2N4, Canada
600 Prime Place, Hauppauge, NY 11788, USA
Toll Free Tel: 1.877.462.6426 | Tel: 905.764.0800 | Fax: 905.764.0862
Email: info@amico.com | www.amico.com

