

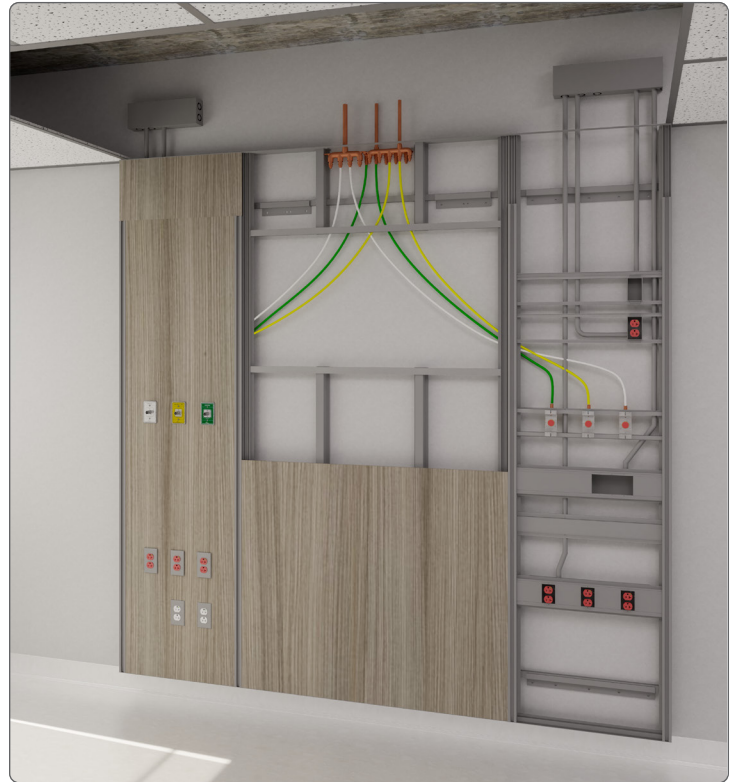
General Specifications

The **NuLOOK Manifold System** shall be manufactured by Amico Corporation in accordance with job specific shop drawings and documents. The following is a general specification, and components listed may not be present or required in final product.

The **NuLOOK Manifold System** is listed by the Underwriters Laboratories Inc. (UL) in Canada and the United States of America. Amico Corporation manufactures all products in accordance with the CSA Z7396.1 standard, National Fire Protection Association (NFPA), NFPA-99 (current edition), National Electric Code (NEC), and the Canadian Electrical Code (CEC).

The NuLOOK Manifold is Made Up of Several Integral Components:

- Vertical sections where the services are located. These components have optional vertical and/or horizontal rails systems and reveals as well as 3D wrap finished front panels attached. These sections are installed on the finished wall.
- Central section with removable 3D wrap panels for bed area. This component is located between the vertical sections, installed on the finished wall and has optional horizontal/vertical aluminum reveals or rails. It can accommodate bed bumpers and decorative resin panels with built-in LED lights. Please refer to approved submittal drawings for project specific details.
- Decorative side vertical sections with removable 3D wrap panels. These components are located to the left or right of the vertical sections, are installed on the finished wall and have optional horizontal/vertical aluminum reveals or rails. Please refer to approved submittal drawings for project specific details.



Submittals and Verifications

Job specific shop drawings shall be produced for each project. Final shop drawings will include the size and location of the gas manifolds.

As Built drawings will be produced and e-mailed at the time of shipment.

Amico Corporation will manufacture equipment as per signed approval drawings and verification documents which are provided in the job specific submittal package.

Materials and Construction

Integrated Accessory Rails (Optional)

Numbers of integrated rails (horizontal and vertical) are to match final shop drawings. Accessory rails are clear etched anodized aluminum.

Fascia

1/2" Medium-density fiberboard with 3D wrap finish (typical) and 5/8" top access panel (typical). All fascia panels shall be removable for access and easy installation or maintenance of panel wall services using the spring clip system.

Medical Gas Outlets

Amico Corporation's DISS or quick connection type, console style. Each gas outlet comes with flex hose and DISS fitting to connect to the gas manifolds.

Gas Manifolds

Gas Manifolds are indicated on the final shop drawings. They ship loose and they are mounted and connected to the main source on site by others.

Electrical Wiring

Wire for standard and critical branch power circuits shall be #10 or #12 (as specified) type THHN stranded copper wire, 600 volt, with heat resistant thermoplastic insulation for hot (black) and neutral (white). Grounds shall be #10 THHN stranded copper wire (green). All ground conductors shall be installed in conduit.

Grounding and Bonding

All ground conductors shall be installed in conduit or raceway. Each power receptacle shall have a ground conductor connected to a grounding screw. For units where the electrical terminations are located inside the unit, a grounding bus bar will be installed for each type of power.

Low Voltage Data Provisions

This shall be connected to a device junction box via conduit or raceway. Amico Corporation shall include a pull cord extending from junction box to service provision. Telephone nurse call patient station device shall be furnished, installed and wired by low voltage contractor.

Electrical Receptacles

This shall be Hospital Grade 15 or 20 amp, 120 or 277 volt, UL listed and marked hospital grade. Amico Corporation shall furnish and install receptacles with wiring required, as shown on submittal shop drawings. Electrical contractor shall ensure compatibility of plug on accessory equipment to be used with these devices: Duplex receptacles shall be NEMA style 5-15R or 5-20R, in ivory color for use on normal power circuits, and in red color for use on critical branch power circuits.

Warranty

Amico Corporation warrants its Architectural Products to be free from material defects and workmanship for a period of ten (10) years from the date of shipment.

Product Code

FW-XXYY-NU-GEN-P

- XXYY = Variable Width/Height
- NU = NuLook Refresh
- P = Private (P) or Semi-Private (S)

Distributed By: