

Patient Monitor Mounts

Wall-Mounted & Mobile



Amico



Compatibility

Mounts Available For:

Advantech

Alaris

Analogic

CAS Medical

Capsule

Cerner

Colin

Criticare

Datascope Patient Monitoring

Datex-Ohmeda

Dräger Medical

Elo Touch

Fukuda Denshi

GE Healthcare

Hoana Medical

INVIVO

Ivy Biomedical Systems

Larsen & Toubro

Masimo

Mediana

Medtronic

Mennen Medical

Mindray

Nellcor

Nihon Kohden

Nonin

Oridion

Philips Medical

Schiller

Spacelabs Healthcare

Welch Allyn

WITT

ZOLL

Want to mount something not shown in the list above? We'll make that for you.

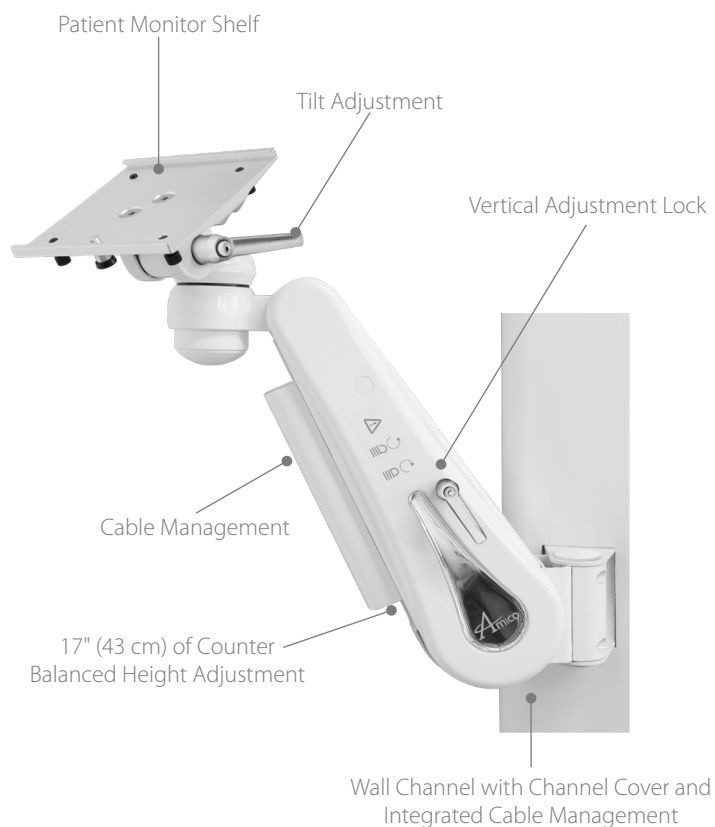
Get in touch with a Patient Monitor Mount expert right now!

Call **1.877.264.2697** or Email **accessories@amico.com**



AHM

Adjustable Height Monitor Arm

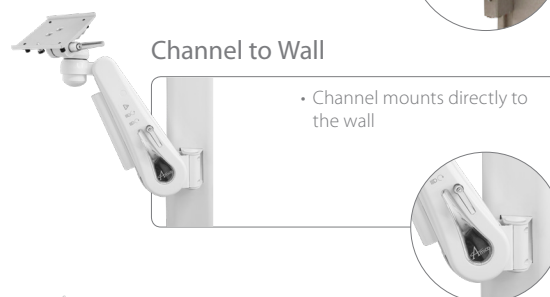


Channel or Rail Adapters

Direct to Vertical or Horizontal Rail



Channel to Wall



Direct to Anesthesia Machine



AHM Extensions - Adjustable Height Models



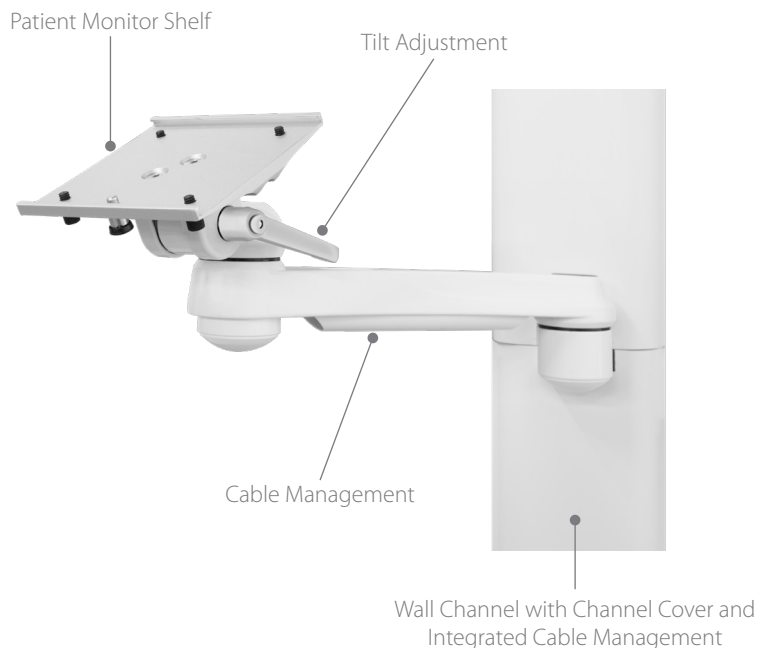
Channel Cover



Channel Covers

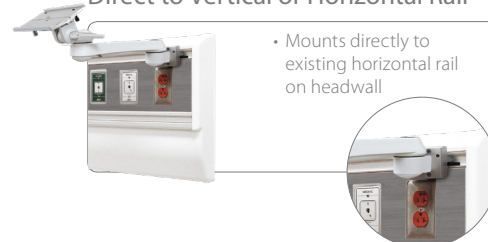
SSM

Side to Side Monitor Arm



Channel or Rail Adapters

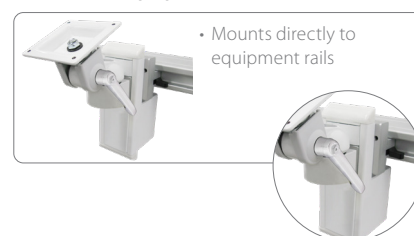
Direct to Vertical or Horizontal Rail



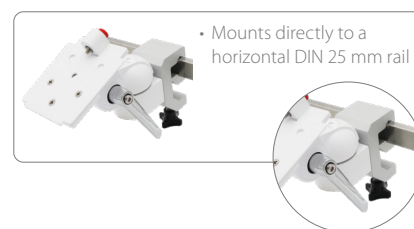
Direct to Mobile Workstation



Direct to Equipment Rail



Direct to Horizontal DIN Rail



SSM Extensions - Side to Side Models



SSM 9" x 9" Double
(22.9 cm x 22.9 cm)



SSM 12" x 12" Double
(30.5 cm x 30.5 cm)



SSM Flush



SSM 9" (22.9 cm) Single



SSM 12" (30.5 cm) Single

Patient Monitor Shelf



5" (12.7 cm) Shelf
with 30° Tilt Limit



6" (15.2 cm)
Drop on Shelf



Philips IntelliVue Shelf



5" (12.7 cm) Shelf with
Slide-in VESA 75/100 Plate



5" (12.7 cm) Shelf for
Back Mounts



3" (7.6 cm) Shelf
with 30° Tilt Limit



Welch Allyn Shelf



LCD Head



VESA Drop-on Shelf

Accessories

We offer a number of accessories to help you improve your workflow and ensure you remain comfortable while using technology. Create the perfect patient care area by mixing and matching our accessories with our other product lines. Help promote infection control and keep your environment comfortable and clutter-free.

Single Glove Box Holder



- Universal holder
- Easy to load and mounts to any accessory bar or wall channels

Universal Sharps Holder



- Ideal for mini sharps box and universally compatible
- Easy to load and mounts to accessory bars or wall channels

Hand Sanitizer Holder



- Ideal for personal sized containers
- Easy to load and mounts to any accessory bars or wall channel

Chart Holder



- Temporarily store your charts
- Mount to Amico's accessory bar or wall channel

Accessory Add-on Top



- Adapter to mount accessory above monitor

Hospital Grade Power Bar



- Hospital grade, 4 power outlets
- 120 VAC, 60 Hz

LCD Bumper Handle



- Ergonomic handles can be added to any Amico LCD mount
- Knuckle guard protects walls and user's hands

Barcode Mount



- Universal scanner holders

Dual Cord Hook



- Manage cables, cords and other hanging wires
- Attach to the bottom of any monitor arm

Wrist Rest



- Anti-microbial comfort wrist rest
- Virox friendly

Mouse Pad



- Wipeable, self-adhering
- Non-reflecting, ideal for optical mice

Mouse Holder



- Neatly stores mouse when not in use

Power Supply Mount



- Holds most power adapters for PCs, patient monitors and LCDs

Dual Power Supply Mount



CPU Mounts



- Available in various sizes

Basket with Disk Adapter



- Mount basket directly to any arm
- Available:
5" x 5" x 4" (12.7 cm x 12.7 cm x 10.2 cm)
10" x 10" x 4" (25.4 cm x 25.4 cm x 10.2 cm)
10" x 6" x 9" (25.4 cm x 15.2 cm x 22.9 cm)

Monitor Handle



- Easy grab handle


Shelf




Storage Baskets

- Sterilizable
- Powder coated
- Mount to channel or any rail system


5" x 5" x 4"
(12.7 cm x 12.7 cm x 10.2 cm)




10" x 10" x 4"
(25.4 cm x 25.4 cm x 10.2 cm)




10" x 6" x 9"
(25.4 cm x 15.2 cm x 22.9 cm)




BP Cuff Basket




Basket Liner
10" x 10" x 4"
(25.4 cm x 25.4 cm x 10.2 cm)



Channels and Rails



Channel Cover



Compatible with Rail Types

• Amico Horizontal	• DIN	• HSI Vertical	• Amico Pole
• Amico Vertical	• Fairfield	• Hill-Rom Vertical	
• Direct to wall	• Monitor Channel	• Fairfield CAM	
• Slide	• Dovetail	• DIN Rotational Pole	

Down Post



- Available in various lengths

Table Top Mount



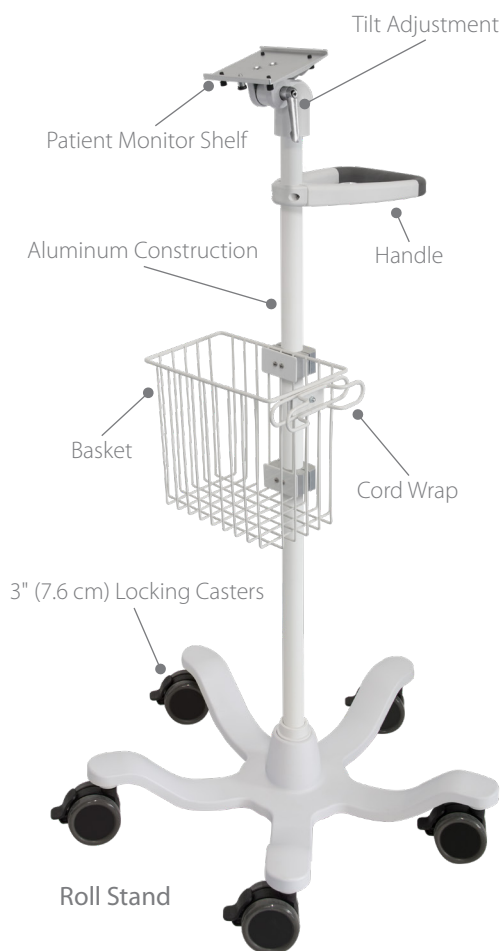
- Available in various heights

Counter Top Mount



- Available in various heights

Mobile

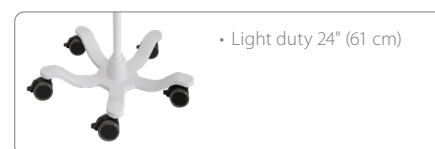


Roll Stand Accessories

Soft Grip Handle



Aluminum Base



Counterweight



Anodized Aluminum Post

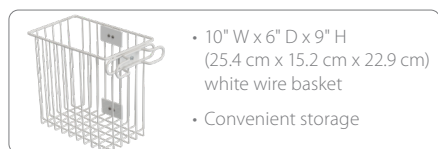


Powder Coated Aluminum Post



Accessories

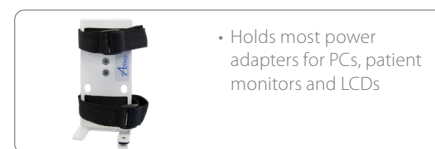
Wire Basket



Cord Wrap



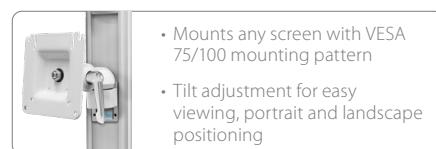
Power Holder



Power Bar



LCD Screen Flush Mount



Barcode Holder



Capsule

Mounts



Capsule Neuron 2 on Direct Mount
SSM (Side to Side Mounting Arm)



Capsule Neuron 2 on Flush
Vertical Mount SSM



Capsule Neuron 2 on Flush
Horizontal Mount SSM



Capsule Neuron 2 on Dual
Vertical Mount SSM



Capsule Neuron 2 on
Horizontal SSM



Capsule Neuron 2 on
Roll Stand



Capsule Neuron 2 on
Channel Mount SSM



Capsule Neuron 3 on Flush
Vertical Mount SSM



Accutor Plus
Roll Stand
Extender



CARESCAPE V100
Roll Stand
Extender



Accutorr (Plus
or V) Transport
Stand Extender



Accutor Plus
Value Stand
Extender



VS3 Roll Stand
Extender



LXi Roll Stand
Extender



Connex Roll
Stand Extender



Dual SSM Wall
Mount



Single SSM
Wall Mount



Flush Wall
Mount



Vertical DIN
Rail and Pole
Mount



Horizontal DIN
Rail and Pole
Mount



Wall Channel



Power
Supply Mount



Ultra Flush
Pole Mount



Power Supply
Pole Mount



Power Supply
DIN Rail Mount

GE Healthcare

Mounts



CARESCAPE B650 on Direct Mount AHM (Adjustable Height Mounting Arm)



CARESCAPE V100/150
on Roll Stand



Solar 8000i on AHM



Solar 8000i on AHM
with Extension



Dual Tram-Rac 4
on Rac Hanger



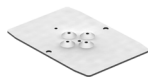
Single Tram-Rac 4, PRN50,
PDM on SSM



Solar 8000i Directly
on Vertical Rail



Flush 5" (12.7 cm) Shelf
for Solar 8000i and
Unity Network ID Box



PDM Adapter Plate



8000i Stack Mount Post
for LCD Monitor



Remote 8000 Keypad
Bracket



B850 F5 Module
Hanger



B850 F5 Module
Hanger and PRN-50
Printer Mount



Single Tram-Rac
4 or 2 Hanger



Dual Tram-Rac
4 or 2 Hanger



L Bracket for
Tram-Rac 4 or 2



L Bracket with
Pole Clamp
for PDM Module



L Bracket for PDM
or PRN50 Digital Writer



Power
Supply Mount

Philips

Mounts



IntelliVue MX450
on Direct Mount AHM
(Adjustable Height
Mounting Arm)



IntelliVue MP70
on Direct Mount AHM



IntelliVue MP50
on AHM



IntelliVue MP50
on Direct Mount Horizontal AHM



IntelliVue MP70
on Direct Mount Vertical AHM



SureSigns VM8
on Roll Stand



IntelliVue MP70
on Direct Mount AHM



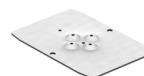
Pole Clamp for Philips
Speed Point Remote



Adapter for Philips
Flexible Module Server
(FMS) and Satellite Rack



Power Supply Mount



SureSigns VM4, VM6, VM8, VS3,
VS4, and VSV Adapter Plate



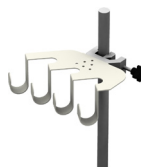
Telemon Bracket



Cord Hook



Quad Cord Hooks



Quad Cord Hooks
with Clamp



Quad Cord Hooks
with Downpost



MP90 for Flat Panel Display,
Remote Speedpoint and
External Alert

Dräger

Mounts



Infinity Delta on Direct Mount AHM (Adjustable Height Mounting Arm)



Infinity Delta XL with Docking Station on AHM



Infinity C700 on Direct Mount Falcon



Infinity Delta on Direct Mount AHM



Infinity C700 on Direct Mount AHM



Infinity Omega on Direct Mount AHM



Infinity Delta on Direct Mount Falcon



Infinity C700 Keyboard Tray



Dräger Power Supply Mount



Power Supply Mount for C700

Spacelabs

Mounts

Xprezzon on Direct Mount SSM (Side to Side Mounting Arm)



SL2600 on SSM With Hanging Module



MCare on Direct Mount AHM



Ultraview SL2800 on Falcon with Extension



Xprezzon on Direct Mount SSM



MCare on Direct Mount AHM



SL2600 on Direct Mount SSM



Dual Power Supply Mount



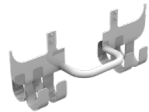
Power Supply Mount for C700



Dual SL Command Module Hanger



Single SL Command Module Hanger



Xprezzon Hook and Handle Bracket



Xprezzon O Bracket



AUX Module Bracket Next to Xprezzon O Bracket



Plate for 2200, 2400, 2600



MCare Plate



VESA Drop on Shelf for Cube and Elance Monitors

Welch Allyn

Mounts



CVSM on Roll Stand



300 Series
on Roll Stand



Spot Vital Signs LXI
on SSM



Spot Vital Signs
on SSM



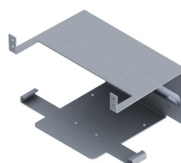
Propaq LT on Dual
Device Mount



Spot Vital Signs LXI
on Flush Rail Mount



Propaq Plate with Printer



Propaq Plate
without Printer

Mindray

Mounts



BeneVision N22 with SMR Module
on Direct Mount AHM
(Adjustable Height Mounting Arm)



BeneView T5
on Roll Stand



BeneView T5 on Direct
Mount AHM



Mindray VS800 on Direct
Mount SSM



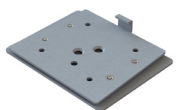
VS800 Shown on
Mobile Workstation



PM 9800 on Direct
Mount SSM



BeneView T5 on
Roll Stand



VS 800 Plate



PM 7000X Plate



PM 8000X Plate



PM 9000X Plate



T5 Plate



T7 Plate



Datascope/Mindray
Passport 2 Plate with
Power Supply Mount



V12 Module
Mounting Kit

Nihon Kohden

Mounts



Nihon Kohden Life Scope G9
on Headwall



Nihon Kohden BSM 3500
on MRS channels



Nihon Kohden BSM 3500
on TTM



Nihon Kohden BSM 3500
on Headwall



Nihon Kohden G5 Max
on Headwall



Nihon Kohden BSM 6701
on Direct Mount AHM



Nihon Kohden BSM 6701
on Roll Stand



Nihon Kohden Life Scope
G9 on CTM Cart



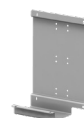
Nihon Kohden Life Scope
G7 on CTM Cart



Nihon Kohden
6501 Plate



Nihon Kohden Life
Scope BSM Plate



Nihon Kohden
CSM 1900 Mount



Nihon Kohden
JA694PA Mount



Nihon Kohden
QI930P Mount



Nihon Kohden
920PA Plate

Masimo, CAS, Nellcor, Criticare & Suntech

Mounts for Vital Signs Monitors



Vital Signs on Direct Mount AHM (Adjustable Height Mounting Arm)



Nellcor OxiMax N-560 on Roll Stand



Masimo Rad-87 on Direct Mount AHM



CAS Monitor 750 on Direct Mount AHM



Masimo Radical-7 on Direct Mount AHM



Nellcor OxiMax N-600X on Direct Mount SSM



Nellcor OxiMax N-560 on Direct Mount AHM



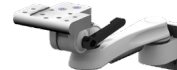
Criticare 506DN Plate



Criticare 507E Plate



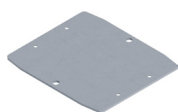
Criticare 8100 Plate



Side to Side Monitor Arm



Adjustable Height Monitor Arm



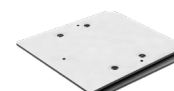
Masimo Radical Plate



Nellcor 600 Plate



CAS 740 Plate



Edan M3 Plate

Mounting to Anesthesia Carts



Easily mount your Patient Monitors, equipment, and storage for optimal workflows in the operating room.

Features and Benefits

Cable Management

Discrete and sleek cable management maintains a tidy workspace and encourages excellent infection control.

Custom Solutions

A variety of options are available to integrate multiple monitors, an IT charting station or additional peripherals. We work with your facility to accommodate specific needs and unique requirements.

Pre-Assembled

All of our products come pre-assembled to save you the time and cost that it takes to assemble the units. Simply slide the Dovetail or MRS adapter into the track on the machine.

Improve Flexibility

Increase the range of motion for your IT charting station or patient monitor by adding an extension, but don't compromise the stability. Extensions come in a variety of sizes from 6" to 16" (15.24 cm to 40.64 cm).

Easy to Use

Adjust the IT charting station or patient monitor with one hand while working! All of our height adjustable units are counterbalanced to improve workflow and allow the clinician to focus on patient care.



Application Examples

Mount Patient Monitors



- Patient monitor
- Recorder unit
- Connector
- Height adjustability
- Swivel adjustment
- Cable management

Mount Computer Workstations



- IT station for charting
- CPU Mount
- Height adjustability
- Swivel adjustment
- Portrait orientation for LCD monitor
- Cable management
- Extra writing surface

Compatibility

- | | | | |
|------------------------|------------------------|----------------------------|--|
| • GE Aespire | • Dräger Narkomed 6400 | • Dräger Fabius GS | • Datex Ohmeda Aestiva |
| • GE Aestive | • Dräger Narkomed GS | • Dräger Fabius GS Premium | • Datex Ohmeda Aespire |
| • GE Aisys | • Dräger Julian | • Dräger Cato | • Datex Ohmeda ADU |
| • GE Avance | • Dräger Tiro | • Dräger Apollo | • Custom - talk to a product expert today! |
| • Dräger Primus | • Dräger Fabius OS | • Datex Ohmeda Avance | Call 1.877.264.2697 or Email |
| • Dräger Narkomed 6000 | • Dräger Fabius MRI | • Datex Ohmeda Aisys | accessories@amico.com |

Falcon Computer Workstation

Add a Falcon Computer Workstation to your anesthesia cart to add charting capability in the OR.



- 6.5" (16.51 cm) Independent LCD height adjustment
- Entire system easily folds back less than 9" (22.9 cm) for storage when not in use
- Includes both 75/100 VESA mounting options with easy installation slots
- Integrated cable management
- Negative tilt keyboard adjustment
- Easy access to barcode scanner and mouse holders
- 17" (43.18 cm) Overall vertical adjustment range accommodates users of any height
- Locking feature when height has been adjusted
- Counterbalanced to provide effortless movement



Amico Accessories Inc. | 85 Fulton Way, Richmond Hill, ON L4B 2N4, Canada
Toll Free Tel: 1.877.264.2697 | Tel: 905.763.7778 | Fax: 905.763.8587
Email: accessories@amico.com | www.amico.com

Represented By: