

# JABRA SPEAKER 410/510 MOUNTING PLATE

## Quick Installation and Maintenance Instructions



HMA-VESA-SPK-PLT

### Medical Facility Responsibility

Preventive maintenance checks must be performed regularly to maintain the quality and performance of this product. Any parts that may be broken, missing, worn, distorted, or contaminated in any way should not be used and all affected parts should be replaced immediately. Should the necessity of any repair be suspected; please contact your local distributor.

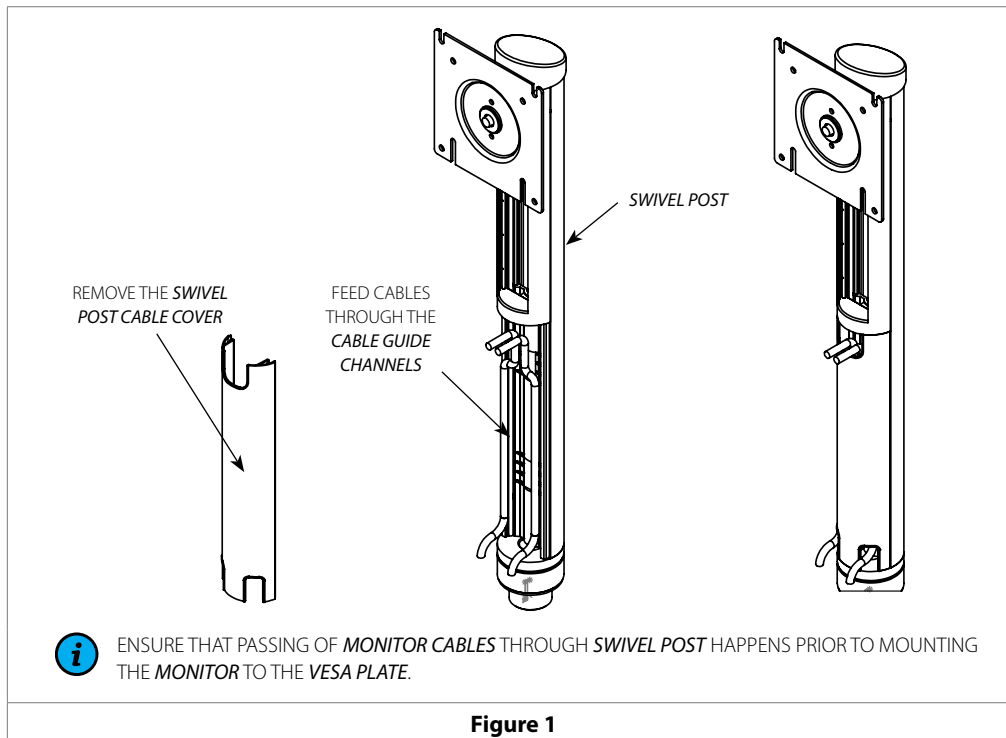


**WARNING:** This Quick Installation and Maintenance Guide is for retrofitting existing Hummingbird cart with the HMA-VESA-SPK-PLT and CAMHLD for telehealth usage. User may refer to the full Hummingbird manual for aspects associated to the mobile workstation.

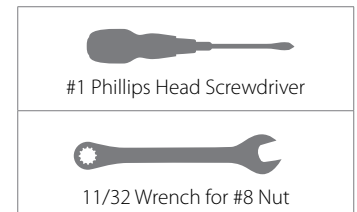


**WARNING:** Ensure the installation is performed away from the patient in a safe proximity to avoid any potential injuries to any person.

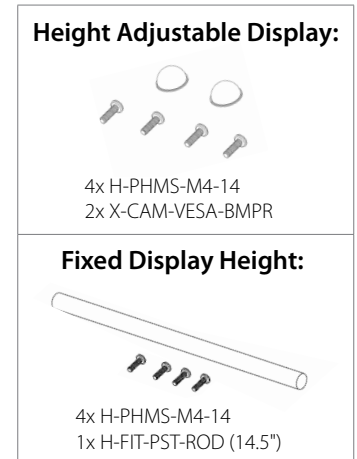
### Cabling



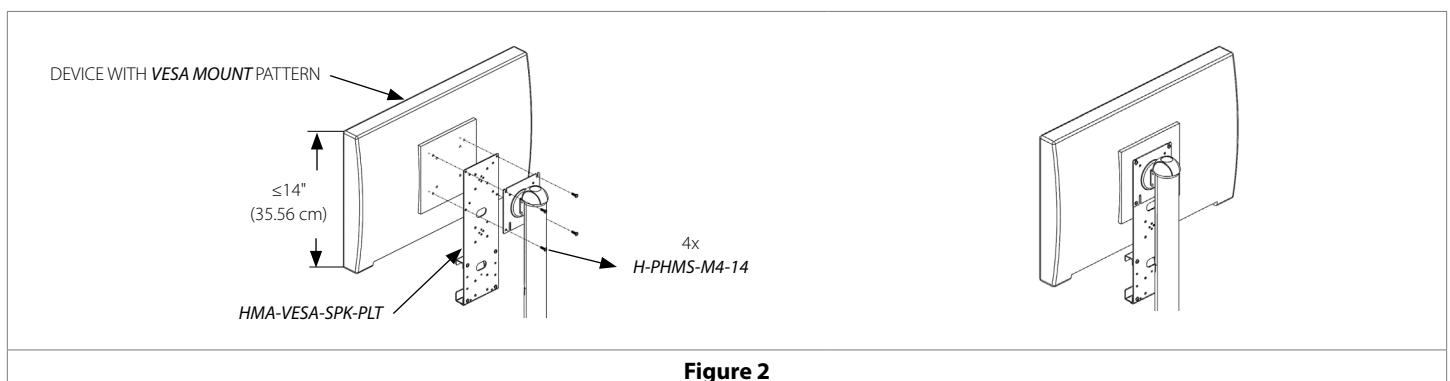
### Installation Tools



### Hardware Kits



### Attaching Monitor & Speaker Mounting Plate



# JABRA SPEAKER 410/510 MOUNTING PLATE

## Quick Installation and Maintenance Instructions



HMA-VESA-SPK-PLT

### Reorientation of the Speaker Holder Plate

<p>UNSCREW 4x <i>H-PHMS-832-516</i> TO CHANGE ORIENTATION OF THE <i>SPEAKER PLATE</i>.</p>	<p><b>HORIZONTAL FEATURE:</b> QUICK RELEASE</p> <p><b>VERTICAL FEATURE:</b> SECURITY FOR DEVICE (LOCKS UNDER <i>MONITOR</i> - REQUIRES TOOLS)</p>
<p><b>Figure 3</b></p>	<p><b>Figure 4</b></p>

### Sliding Speaker Device into Mounting Plate

#### Horizontal Orientation (Default)

SLIDE THE DEVICE INTO THE SLOT, ENSURE THE DEVICE WIRE DOESN'T INTERFERE WHILE SLIDING AND TWIST THE DEVICE AS SHOWN. FOR REMOVING THE DEVICE, FOLLOW THE SAME PROCEDURE IN REVERSE.

**Figure 5**

#### Vertical Orientation

THE *SPEAKER* IS TO BE INSERTED INTO THE *HOLDER PLATE* PRIOR TO THE *MONITOR*. LIFT AND HOLD THE *MONITOR*, UNSCREWING FROM THE *VESA PLATE* MAY BE REQUIRED (IF CHANGING DEFAULT ORIENTATION) TO ALLOW THE *SPEAKER* TO SLIDE IN THE *MOUNT PLATE*. ONCE SLID, SCREW BACK THE *MONITOR* AND SECURE THE ASSEMBLY.

**Figure 6**

# JABRA SPEAKER 410/510 MOUNTING PLATE

## Quick Installation and Maintenance Instructions



HMA-VESA-SPK-PLT

### Protecting Speaker Device

Only Applicable to Adjustable Display Height FIT Post



THE ADJUSTABLE *FIT POST* PROVIDES HEIGHT ADJUSTABILITY. HOWEVER, TO PREVENT THE *SPEAKER* FROM DAMAGING/HITTING THE *HMW WORKTOP* (AS SHOWN), USE 2x *X-CAM-VESA-BUMPR* (PROVIDED IN THE KIT).

Figure 6



*X-CAM-VESA-BUMPR* ARE ADHESIVE BACK BUMPERS THAT CAN BE DIRECTLY STUCK ON THE BOTTOM SURFACE AS SHOWN.

Figure 7



THE ADJUSTABLE *FIT POST* WITH *BUMPERS* ATTACHED WILL PROTECT THE *SPEAKER* FROM HITTING THE *HMW WORKTOP*.

Figure 8

# JABRA SPEAKER 410/510 MOUNTING PLATE

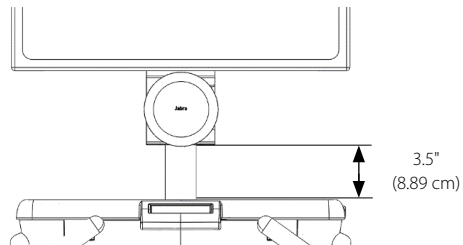
## Quick Installation and Maintenance Instructions



HMA-VESA-SPK-PLT

### Replacing the FIT Post Rod

Only Applicable to Adjustable Display Height FIT Post



**i** **NOTE:** THERE IS A REQUIREMENT TO HAVE AT LEAST 3.5" (8.89 cm) OF CLEARANCE BETWEEN THE BOTTOM FACE OF THE *HMA-VESA-SPK-PLT* AND *HMW-WT*. STANDARD *HMW FIT POST* IS SHORTER AND NEEDS TO BE REPLACED WITH A LONGER POST (PROVIDED IN THE KIT).

**i** **NOTE:** *X-CAM-VESA-BMPR* ISN'T SHOWN IN FIGURE 9 ON THE BOTTOM FACE OF THE *HMA-VESA-SPK-PLT* BECAUSE OF THE FIXED *FIT POST*.

Figure 9

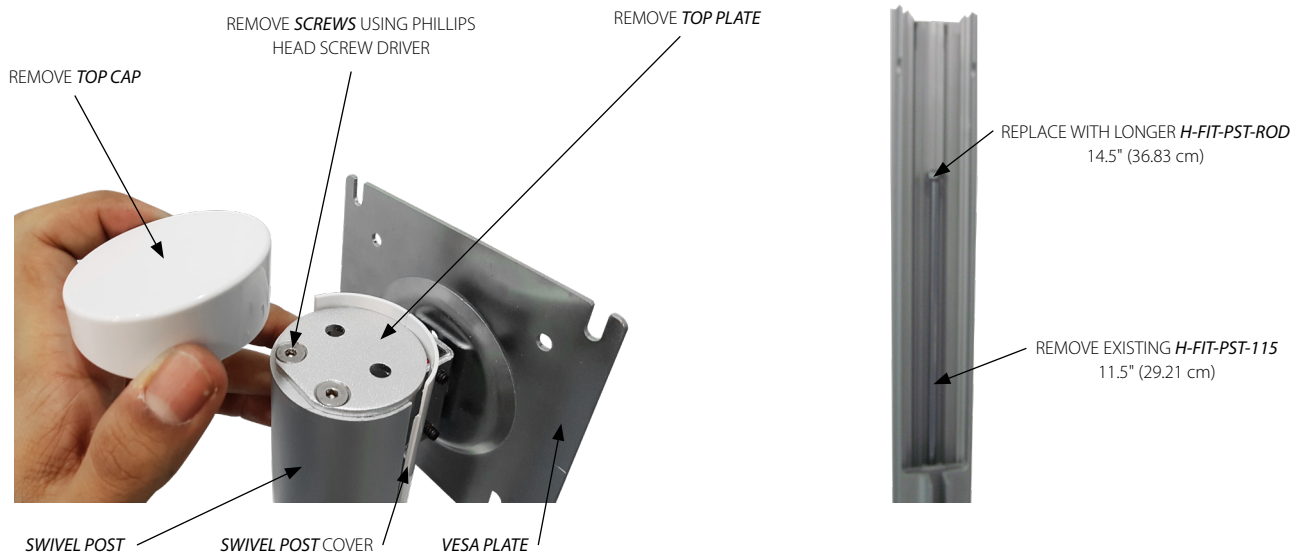


Figure 10

# JABRA SPEAKER 410/510 MOUNTING PLATE

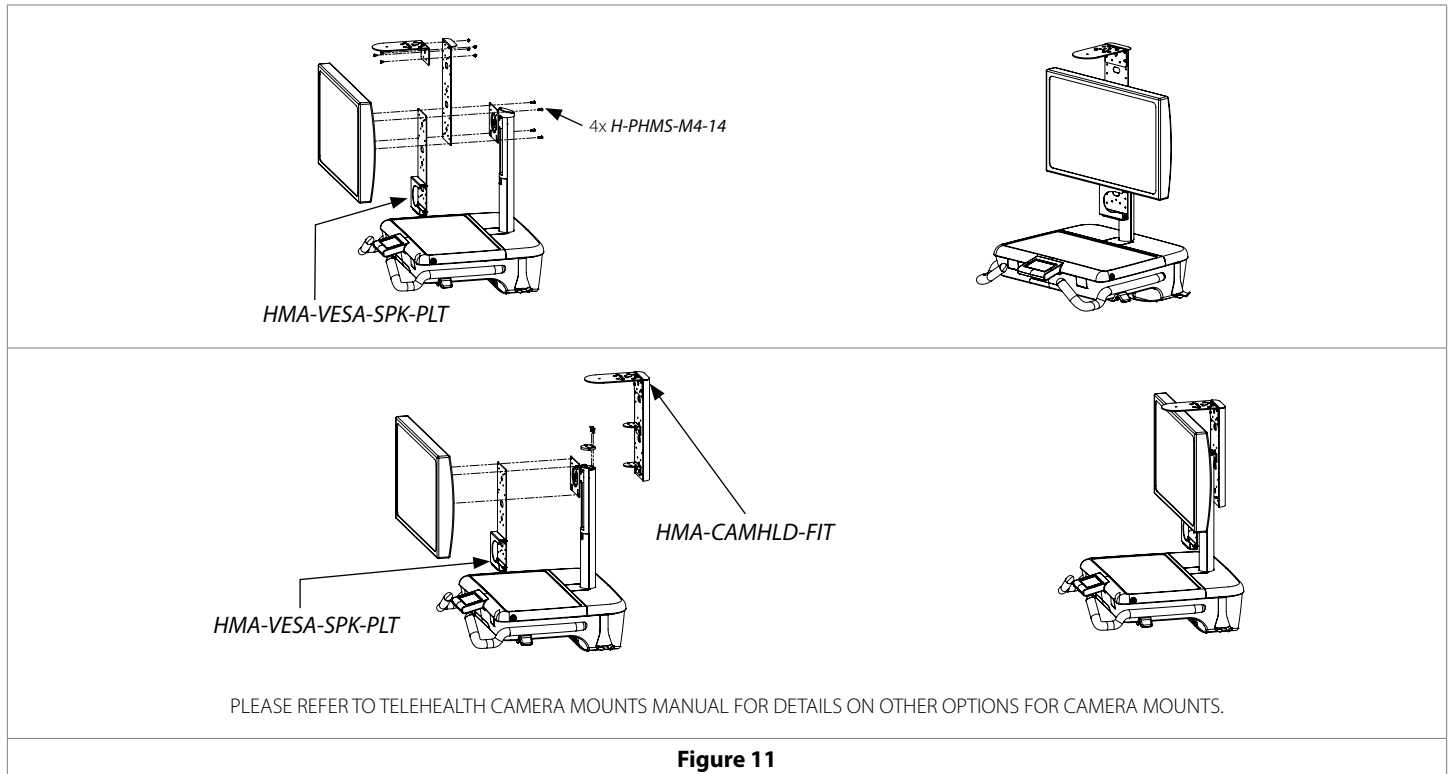
## Quick Installation and Maintenance Instructions



HMA-VESA-SPK-PLT

### Coupling with the Camera Holder Plate

HMA-VESA-SPK-PLT with HMA-CAMHLD-FIT



### Warranty

During the term of the 5-year warranty: Within the first twelve (12) months from the date of shipment, Amico Accessories will repair or replace any part which is proven to be defective at no cost. After the twelve (12) month period, Amico Accessories will send the parts to the customer free of charge, however shipping and installation will be borne by the customer.

The warranty is valid only when the product has been properly installed according to Amico Accessories specifications, used in a normal manner, and serviced according to factory recommendations. It does not cover failures due to damage which occur in shipments or failures which resulted from accidents, misuse, abuse, neglect, mishandling, alteration, misapplication or damage that may be attributable to Force Majeure.

#### **AMICO ACCESSORIES DOES NOT HONOR VERBAL STATEMENTS CONCERNING THE WARRANTY.**

The distributor and/or dealer are not sanctioned to create verbal warranties about the product described in this agreement. Any statements will not be honored or be made part of the agreement of sale. This document is the final complete and exclusive terms of the agreement.

#### **THIS WARRANTY IS INCLUSIVE AND REPLACES ALL OTHER WARRANTIES.**

Amico Accessories shall not, under any circumstances be liable for incidental or consequential damages including, but not limited to, profit, loss of sales or injuries to person(s) or property.

Correction of non-compliance as noted above will result in completion of all liabilities of Amico Accessories whether based on agreement, neglect or changed materials, designs or specifications without notice.

All claims for warranty must first be approved by Amico Accessories Customer Service Department: (info@amico-accessories.com or 1-877-264-2697). A valid Return Goods Authorization number must be obtained from Amico Accessories prior to commencement of any warranty claim.