

Heavy Duty Articulating Shelf For CTM

Quick Installation and Maintenance Instructions



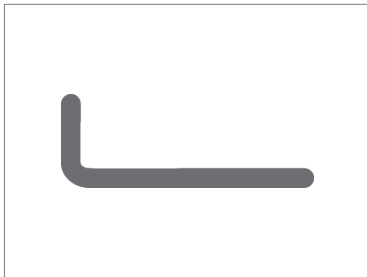
SHELFE-03-MF

Medical Facility Responsibility

Preventive maintenance checks must be performed regularly to maintain the quality and performance of this product. Any parts that may be broken, missing, worn, distorted, or contaminated in any way should not be used and all affected parts should be replaced immediately. Should the necessity of any repair be suspected; please contact your local distributor.

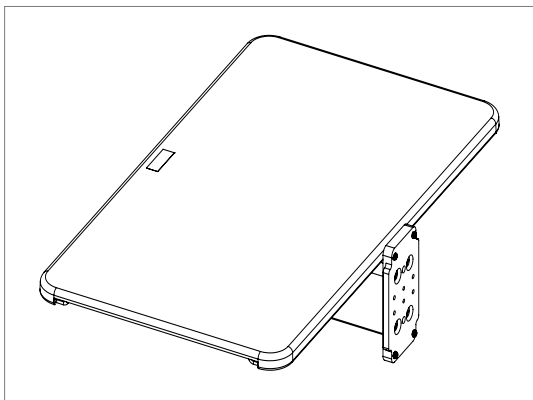
WARNING: IT IS THE RESPONSIBILITY OF THE END USER TO ENSURE ALL ASPECTS OF INSTALLATION ARE COVERED BY FOLLOWING THE FULL CTM CART MANUAL AND REVIEWING WARNINGS/NOTES FOUND AT: <https://docs.amico.com/amico-aa-mobile-computer-workstation-hummingbird-manual.pdf>

Installation Tool

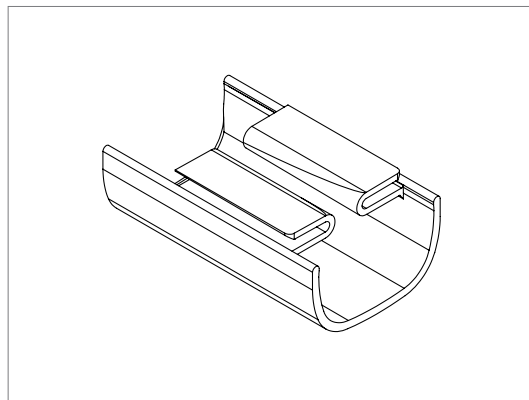


5/32" & 1/8" Allen Keys

Installation Reference



SHELF
(SHELFE-03-MF)



COVER
(X-AHM-CRDHLDR-3)

Specifications

Part Number	Description	Physical Dimensions	Physical Weight
SHELFE-03-MF	3" Shelf Fixed	4.6" x 19" x 11.4" (115.72 mm x 483.13 mm x 290.70 mm)	9.68 lbs. (4.39 kg.)

Heavy Duty Articulating Shelf For CTM

Quick Installation and Maintenance Instructions



Installation Instructions

i **NOTE:** *SHELF (SHELFE-03-MF)* SHOULD ONLY BE INSTALLED AFTER SECURING THE CART BY LOCKING THE *CASTERS*. IT IS THE RESPONSIBILITY OF THE CUSTOMER TO VERIFY THAT THE CART HAS BEEN INSTALLED IN ACCORDANCE WITH AMICO INSTALLATION INSTRUCTIONS.

! **WARNING:** DISCONNECT FROM POWER OUTLET AND REMOVE ALL THE DEVICES FROM THE CTM CART.

1. Lock the *CASTERS* by stepping on the *LOCKING LEVER* (on each caster) such that it clicks in the down position (**Figure 1**).

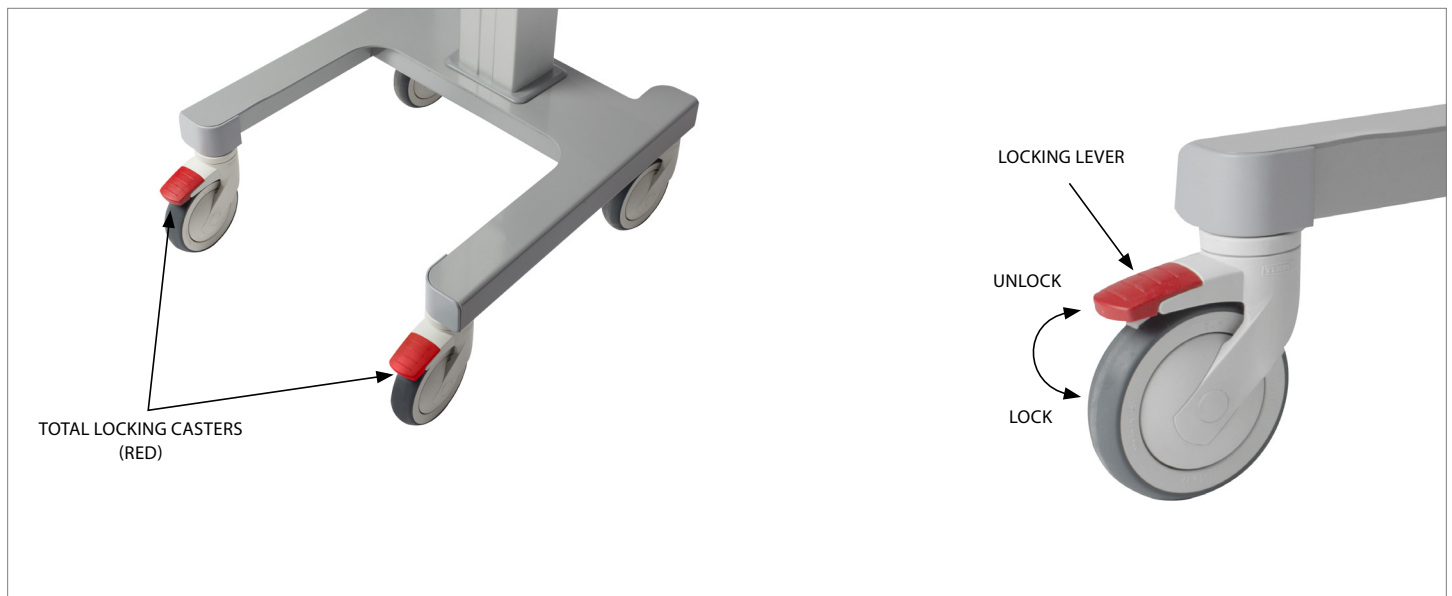


Figure 1

2. Uninstall *DISPLAY MOUNT* or *KEYBOARD MOUNT* or *LAPTOP MOUNT* from the *COLUMN* by unscrew the 4x *TOP PLATE SCREWS* and 4x *TOP PLATE WASHERS*, place the *TOP PLATE* aside using 5/32" Allen key. Remove the *MOUNTS* by unscrewing the 2x *SET SCREWS* on each *MOUNT* bottom using 1/8" Allen key and slide it out. Remove the *COLUMN COVER* as needed (**Figure 2**).

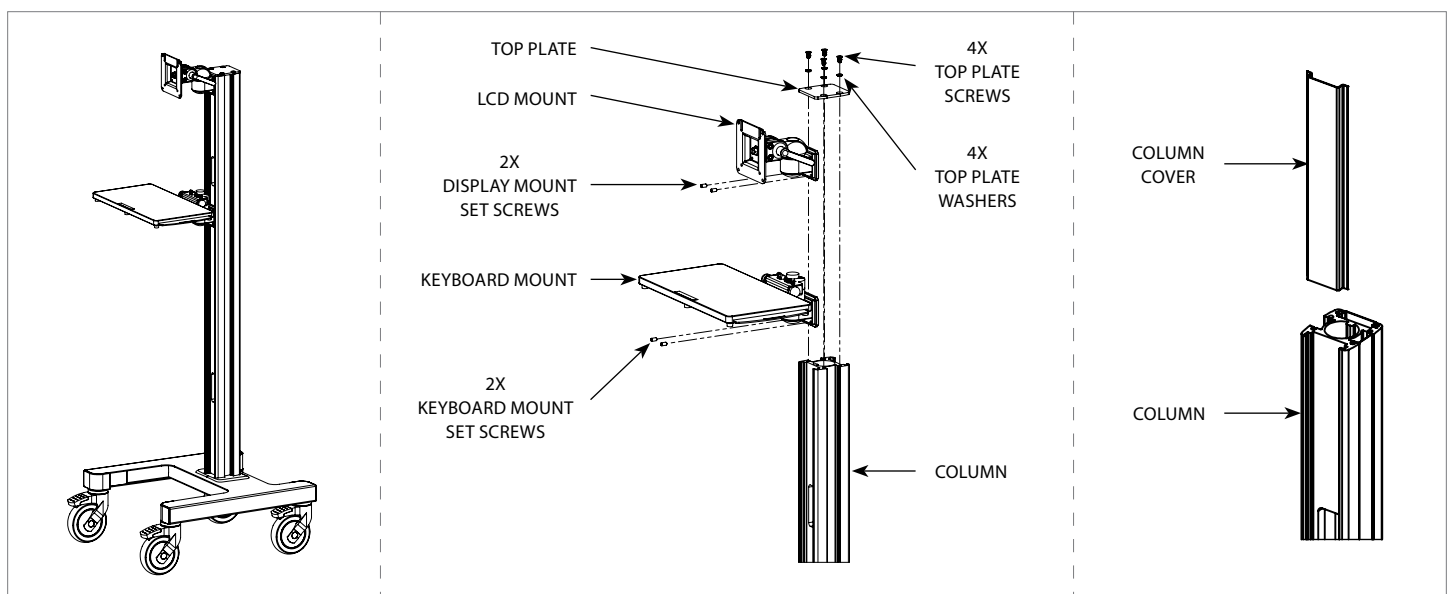


Figure 2

Heavy Duty Articulating Shelf For CTM

Quick Installation and Maintenance Instructions



- Slide the **SHELF** into the **COLUMN** front channel slowly. Move the **SHELF** down until the recommended height and secure by tightening the 2x **SET SCREWS** using 1/8" Allen key. Ensure the **COLUMN** is covered by cutting the **COLUMN COVER** as needed (**Figure 3**).

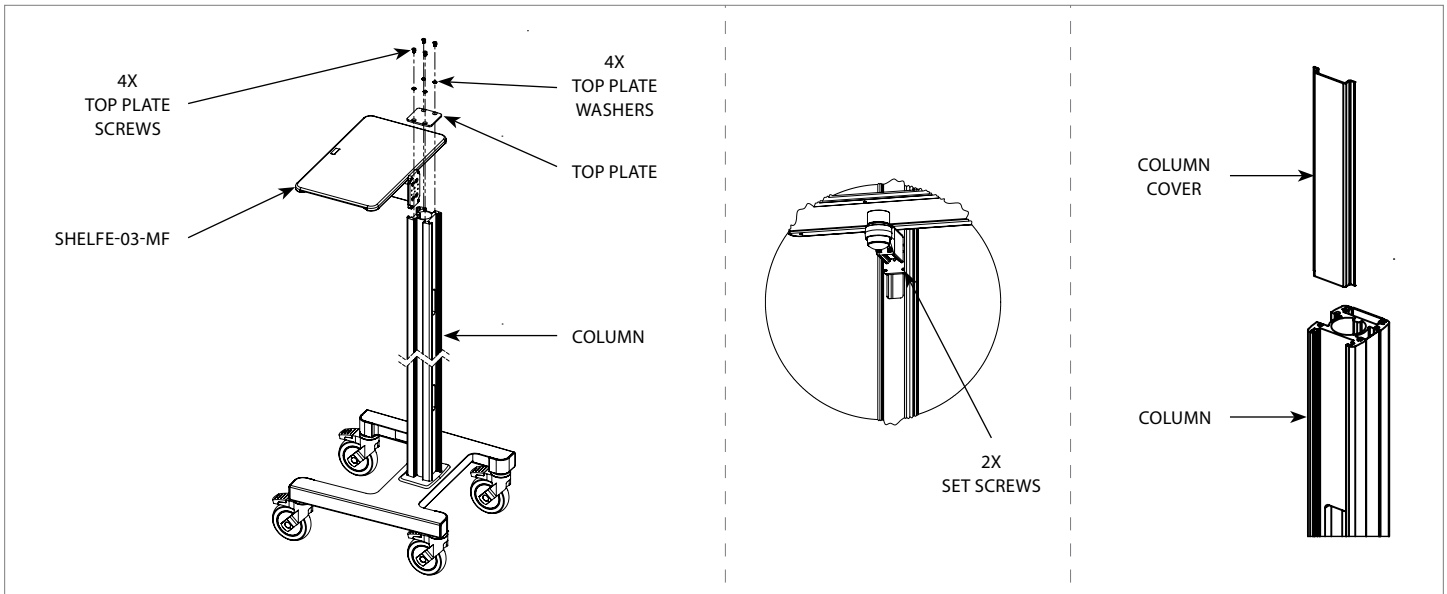


Figure 3

- Install the **DISPLAY MOUNT** or **KEYBOARD MOUNT** or **LAPTOP MOUNT** back to the **COLUMN** and secure by tightening the 2x **SET SCREWS** on each **MOUNT** at desire height and put back the **TOP PLATE** with 4x **TOP PLATE SCREWS**, 4x **TOP PLATE WASHERS**.

i **NOTE:** RECOMMENDED HEIGHT FOR THE SHELF ON CTM CART IS MAXIMUM 15" AWAY FROM THE BASE (**FIGURE 4**).

- Snap the **COVER** to the bottom of the **SHELF** arm (**Figure 4**).

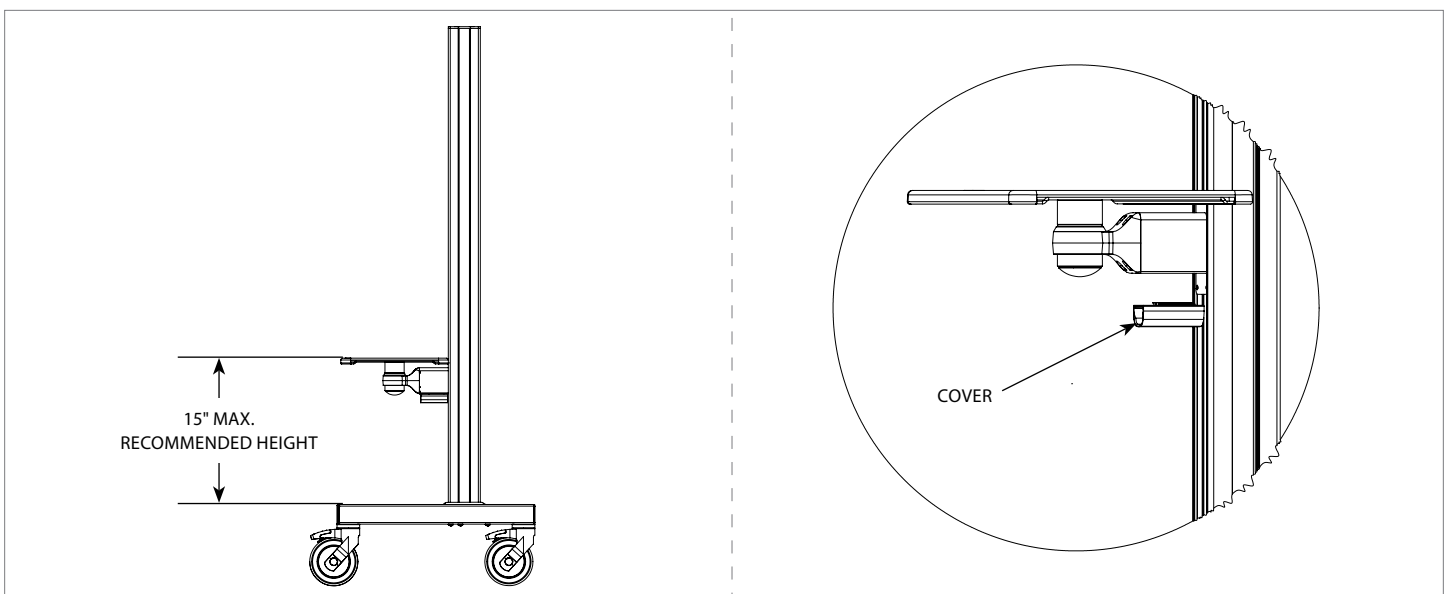


Figure 3

Heavy Duty Articulating Shelf For CTM

Quick Installation and Maintenance Instructions



Troubleshooting

Symptom	Possible Cause	Solution
Shelf is damping or dropping down.	Set screws have loosened/not installed properly.	Tighten the set screws.

Maintenance

It is recommended that once every three (3) months, shelf set screws, all bolts and screws are checked to ensure that they are tight. Visually inspect the product for signs of damage based on degree of usage.

Warranty

Amico Accessories Inc. warrants all mounting accessories to be free from defects in material and workmanship for a period of twelve (12) months from the date of shipment. Within this period Amico Accessories Inc. will repair or replace any part which is proven to be defective.

Amico Accessories Inc. will warrant its materials to be free from defect for an additional period of four (4) years, (five [5] years from the date of shipment). Within this period, Amico Accessories Inc. will replace any part which is proven to be defective, at no charge. Shipping and Installation costs after the first twelve (12) months will be borne by the Customer.

This warranty is valid only when the product has been properly installed according to Amico Accessories Inc. specifications, used in a normal manner and serviced according to factory recommendations. It does not cover products that are not manufactured by Amico Accessories Inc. It does not cover failures due to damage which occurs in shipments or failures which result from accidents, misuse, abuse, neglect, mishandling, alteration, misapplication or damage that may be attributable to acts of God.

Amico Accessories Inc. shall not be liable for incidental or consequential damages resulting from use of equipment.

All claims for warranty must first be approved by Amico Accessories Inc. A valid Return Goods Authorization (RGA) number must be obtained from Amico Accessories Inc. prior to commencement of any service work. Warranty work, which has not been pre-authorized by Amico Accessories Inc., will not be reimbursed.

AMICO ACCESSORIES INC. DOES NOT HONOR VERBAL STATEMENTS CONCERNING THE WARRANTY.

The distributor and/or dealer are not sanctioned to create verbal warranties about the product described in this agreement. Any statements will not be honored or be made part of the agreement of sale. This document is the final complete and exclusive terms of the agreement.

THIS WARRANTY IS INCLUSIVE AND REPLACES ALL OTHER WARRANTIES.

Amico Accessories Inc. shall not, under any circumstance be liable for incidental or consequential damages including, but not limited to, profit, loss of sales or injuries to person(s) or property. Correction of noncompliance as noted above will result in completion of all liabilities of Amico Accessories Inc., whether based on agreement, neglect or changed materials, designs or specifications without notice.

All claims for warranty must first be approved by Amico Accessories Inc. Service Department: accessories@amico.com or 1.877.264.2697. A valid Return Goods Authorization number must be obtained from Amico Accessories Inc. prior to commencement of any warranty claim.