

Counterweight Plate for FIT Head

Quick Installation and Maintenance Instructions



AHM-FITW-CW-PLT-00

Medical Facility Responsibility

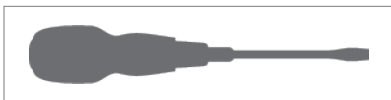
Preventive maintenance checks must be performed regularly to maintain the quality and performance of this product. Any parts that may be broken, missing, worn, distorted, or contaminated in any way should not be used and all affected parts should be replaced immediately. Should the necessity of any repair be suspected; please contact your local distributor.

WARNING: It is the responsibility of the end user to ensure all aspects of installation are covered by following the Workstations manual and reviewing warnings/notes found at:
<https://docs.amico.com/amico-aa-wall-mounted-computer-workstation-falcon-manual.pdf>

Installation Tools

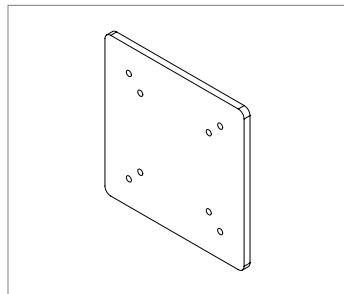


#2 Phillips Head Screwdriver

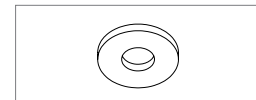


Flat Head Screwdriver

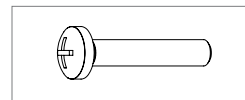
Installation Reference



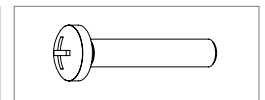
Counterweight Plate
(X-AHM-FITW-CW-SS)



8x Washers
(H-WASH-M4-ST)



4x M4 22 mm Screws
(H-PHMS-M4-22)



2x M4 25 mm Screws
(H-PHMS-M4-25)

Installation Instructions for Counterweight Plate

NOTE: COUNTERWEIGHT (AHM-FITW-CW-PLT-00) SHOULD ONLY BE INSTALLED AFTER LOCKING THE ARM BY INSERTING THE LOCKING LEVER INSIDE THE MOUNTING HOLE ON THE ARM AND ROTATING CLOCKWISE TO LOCK. IT IS THE RESPONSIBILITY OF THE CUSTOMER TO VERIFY THAT THE WORKSTATION HAS BEEN INSTALLED IN ACCORDANCE WITH AMICO INSTALLATION INSTRUCTIONS.



Figure 1

Counterweight Plate for FIT Head

Quick Installation and Maintenance Instructions



⚠ WARNING: ENSURE THAT THE ARM IS IN THE HIGHEST VERTICAL POSITION AND LOCKED BEFORE MOUNTING OR REMOVING FROM THE FALCON WORKSTATION.

1. To access the **LOCKING LEVER** (not included) to lock the arm, use a Flat Head screwdriver to remove the **PLUG** from the arm. Place the Flathead screwdriver on the slot indentation on the **PLUG** to break it by pinching inside to remove it (**Figure 2**).



Figure 2

i NOTE: IF THE **DISPLAY** IS ALREADY INSTALLED ON THE WORKSTATION, REMOVE BOTTOM **2x M4 SCREWS** AND LOOSEN TOP **2x M4 SCREWS**. CAREFULLY LIFT THE **DISPLAY** OUT OF THE **VESA HEAD** THEN REMOVE TOP **2x M4 SCREWS** OTHERWISE PROCEED WITH NEXT STEP.

2. Determine the **DISPLAY** mounting configuration. VESA 75 (75 mm x 75 mm M4 thread) or VESA 100 (100 mm x 100 mm M4 threads).
3. Partially thread **2x M4 22 MM SCREWS** (provided) through the **COUNTERWEIGHT PLATE** and into top 2x VESA holes on the **DISPLAY** (not provided) (**Figure 3**).
4. Hang the **DISPLAY** and **COUNTERWEIGHT PLATE** from 2x slots on the VESA Head (for VESA 100 use outer slots, for VESA 75 use inner slots). Ensure slot opening is facing up for the configuration needed (**Figure 3**).
5. Insert remaining **2x M4 22 MM SCREWS** through the **COUNTERWEIGHT PLATE** and into the **DISPLAY**. Tighten all **SCREWS** (**Figure 3**). If the thread depth is short in the **DISPLAY**, place **1x** or **2x WASHER** as spacer between the VESA head and **SCREW** as required.

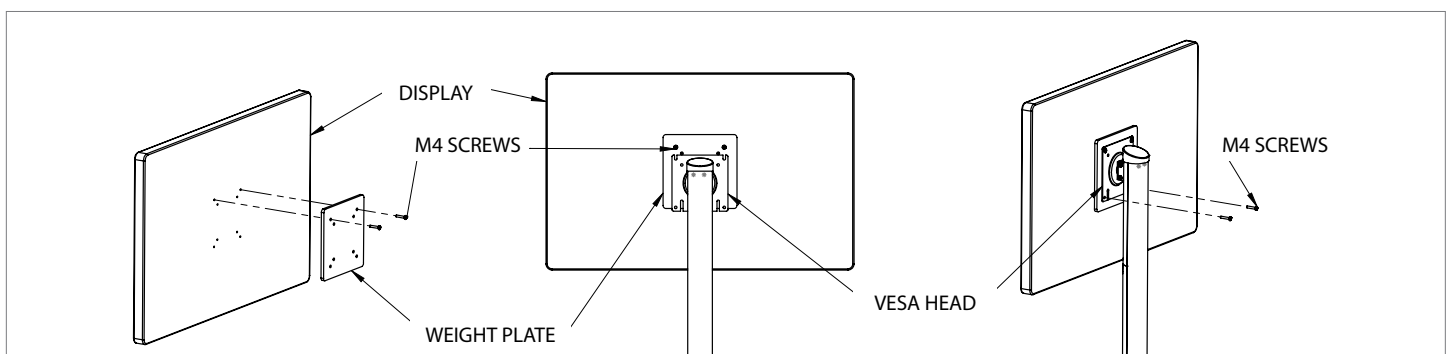


Figure 3

Counterweight Plate for FIT Head

Quick Installation and Maintenance Instructions



i **NOTE:** REFER TO PAGE 25 OF THE FALCON WORKSTATION MANUAL TO COUNTERBALANCE THE WORKSTATION IF NEEDED.

6. Once the arm is balanced correctly, remove the **LOCKING LEVER** (not included) and close the **LOCKING LEVER** hole with the **PLUG** (not provided) (Figure 4). Keep the **LOCKING LEVER** safe for future maintenance or troubleshooting purpose.

Service part number for **PLUG & LOCKING LEVER:** XP-AHM-FIT-LP-SKIT

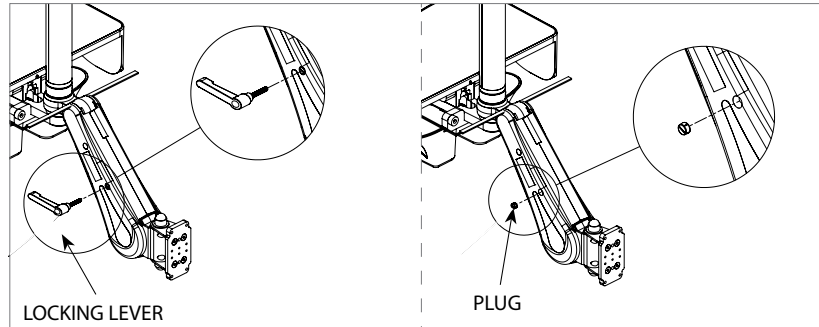


Figure 4

Optional: Keep the **LOCKING LEVER** on the Workstation VESA Head.

i **NOTE:** **LOCKING LEVER** (P/N: X-AHM-SIDE-LVR), **VESA PLATE TUNING TOOL** (P/N: H-CS-HEX-316-18), **LOCK WASHER** (P/N: H-WLM-08), 1/2" and 3/16" **PLASTIC CLIP** (P/N: H-PL-CLIP-12 & H-PL-CLIP-316) are not included. They are part of the Falcon Workstation hardware kit or service kit: XP-FIT-POST-KIT.

7. Remove the pre-installed bottom **M4 SCREWS** from the VESA Head (Figure 5).

8. Reinstall the 3/16" and 1/2" **PLASTIC CLIPS** (included in the Falcon Workstation hardware kit) onto the VESA Head using the **M4 25 MM SCREWS** and **LOCK WASHERS** (included in the Falcon Workstation hardware kit) using a #2 Phillips screwdriver (Figure 5).

i **NOTE:** ENSURE THE **LOCK WASHERS** ARE PLACED BETWEEN THE **PLASTIC CLIPS** MOUNTING TABS. USE **2X LOCK WASHERS** FOR THE 1/2" **PLASTIC CLIP** AND **1X LOCK WASHER** FOR THE 3/16" **PLASTIC CLIP** (FIGURE 5).

9. Slide the **LOCKING LEVER** into 1/2" **PLASTIC CLIP** and **VESA PLATE TUNING TOOL** into 3/16" **PLASTIC CLIP** to secure (Figure 5).

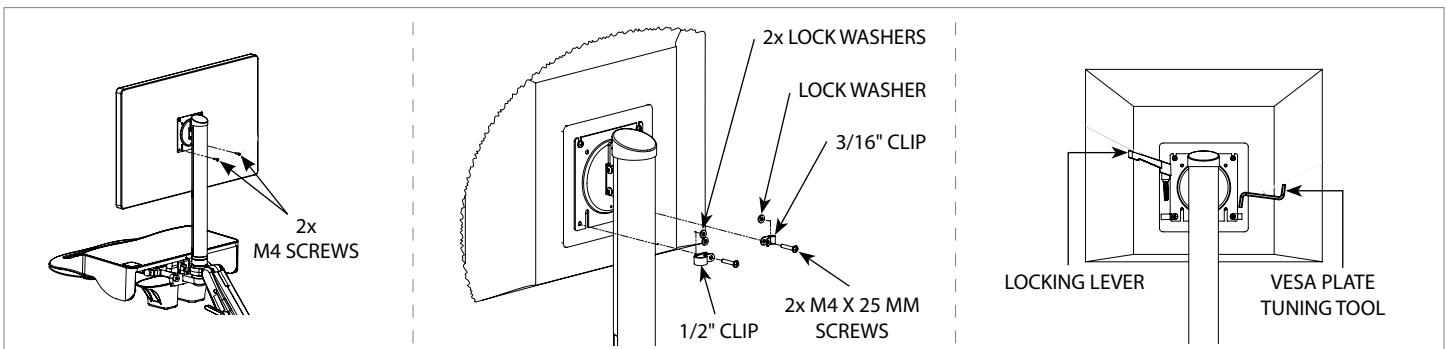


Figure 5

Counterweight Plate for FIT Head

Quick Installation and Maintenance Instructions



Troubleshooting

Symptom	Possible Cause	Solution
Display is wobbling.	Screw length is more than display depth, use the spacers between screw and VESA Head or screws engaged fully.	<ul style="list-style-type: none">• Tighten the screws.• Add 1 more washer between VESA and screws.

Refer to the Workstation manual for additional troubleshooting instructions:

<https://docs.amico.com/amico-aa-wall-mounted-computer-workstation-falcon-manual.pdf>

Maintenance

It is recommended that once every three (3) months, all bolts and screws are checked to ensure that they are tight. Visually inspect the product for signs of damage based on degree of usage.

Warranty

Amico Accessories Inc. warrants all mounting accessories to be free from defects in material and workmanship for a period of twelve (12) months from the date of shipment. Within this period Amico Accessories Inc. will repair or replace any part which is proven to be defective.

Amico Accessories Inc. will warrant its materials to be free from defect for an additional period of four (4) years, (five [5] years from the date of shipment). Within this period, Amico Accessories Inc. will replace any part which is proven to be defective, at no charge. Shipping and Installation costs after the first twelve (12) months will be borne by the Customer.

This warranty is valid only when the product has been properly installed according to Amico Accessories Inc. specifications, used in a normal manner and serviced according to factory recommendations. It does not cover products that are not manufactured by Amico Accessories Inc. It does not cover failures due to damage which occurs in shipments or failures which result from accidents, misuse, abuse, neglect, mishandling, alteration, misapplication or damage that may be attributable to acts of God.

Amico Accessories Inc. shall not be liable for incidental or consequential damages resulting from use of equipment.

All claims for warranty must first be approved by Amico Accessories Inc. A valid Return Goods Authorization (RGA) number must be obtained from Amico Accessories Inc. prior to commencement of any service work. Warranty work, which has not been pre-authorized by Amico Accessories Inc., will not be reimbursed.

AMICO ACCESSORIES INC. DOES NOT HONOR VERBAL STATEMENTS CONCERNING THE WARRANTY.

The distributor and/or dealer are not sanctioned to create verbal warranties about the product described in this agreement. Any statements will not be honored or be made part of the agreement of sale. This document is the final complete and exclusive terms of the agreement.

THIS WARRANTY IS INCLUSIVE AND REPLACES ALL OTHER WARRANTIES.

Amico Accessories Inc. shall not, under any circumstances be liable for incidental or consequential damages including, but not limited to, profit, loss of sales or injuries to person(s) or property. Correction of noncompliance as noted above will result in completion of all liabilities of Amico Accessories Inc., whether based on agreement, neglect or changed materials, designs or specifications without notice.

All claims for warranty must first be approved by Amico Accessories Inc. Service Department: accessories@amico.com or 1.877.264.2697. A valid Return Goods Authorization number must be obtained from Amico Accessories Inc. prior to commencement of any warranty claim.