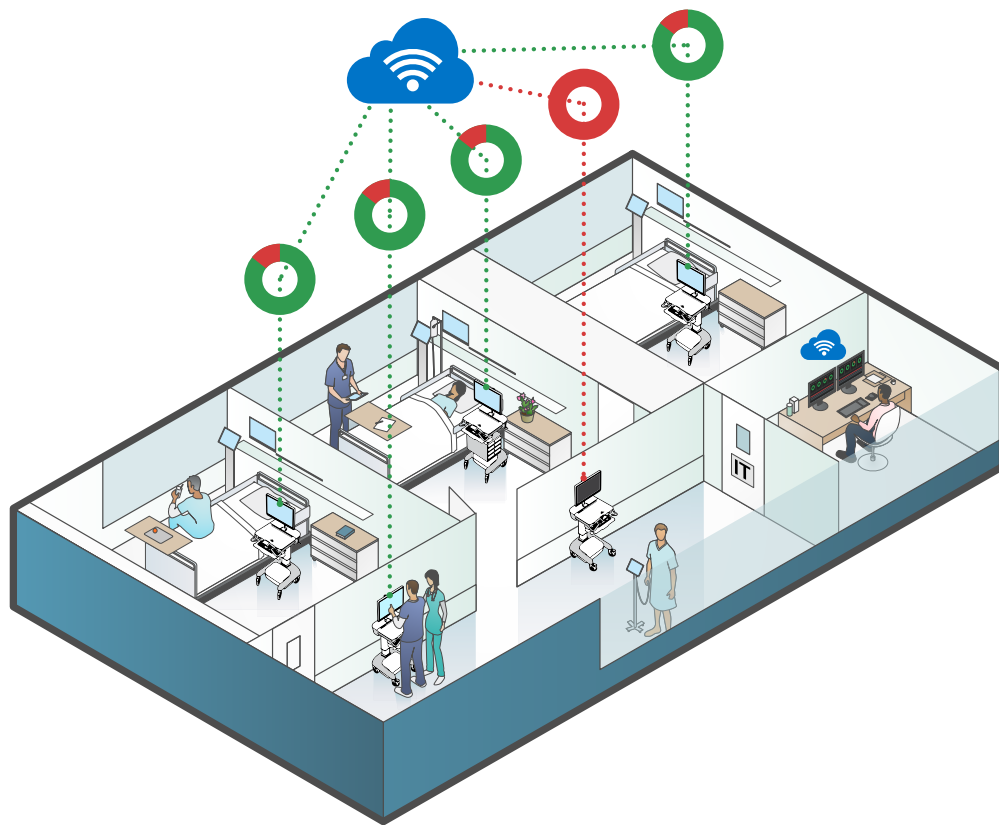


# Installation Guide

## BirdsEye - Zero Client



**A**mico

# Table of Contents

<b>System Requirements</b>	<b>3</b>
CPU	3
Memory	3
Supported Operating System(s)	3
Required Disk Space	3
Display	3
USB Ports	3
<b>Installation Steps</b>	<b>4 - 7</b>

# System Requirements

## **CPU**

Intel Quad Core 1.44 GHz or better

## **Memory**

4 GB RAM or better

## **Supported Operating System(s)**

Windows 7/8/10

## **Required Disk Space**

Installation: 14 MB

Local Database: 250 MB

## **Display**

1024 x 768 32-bit color or better

## **USB Ports**

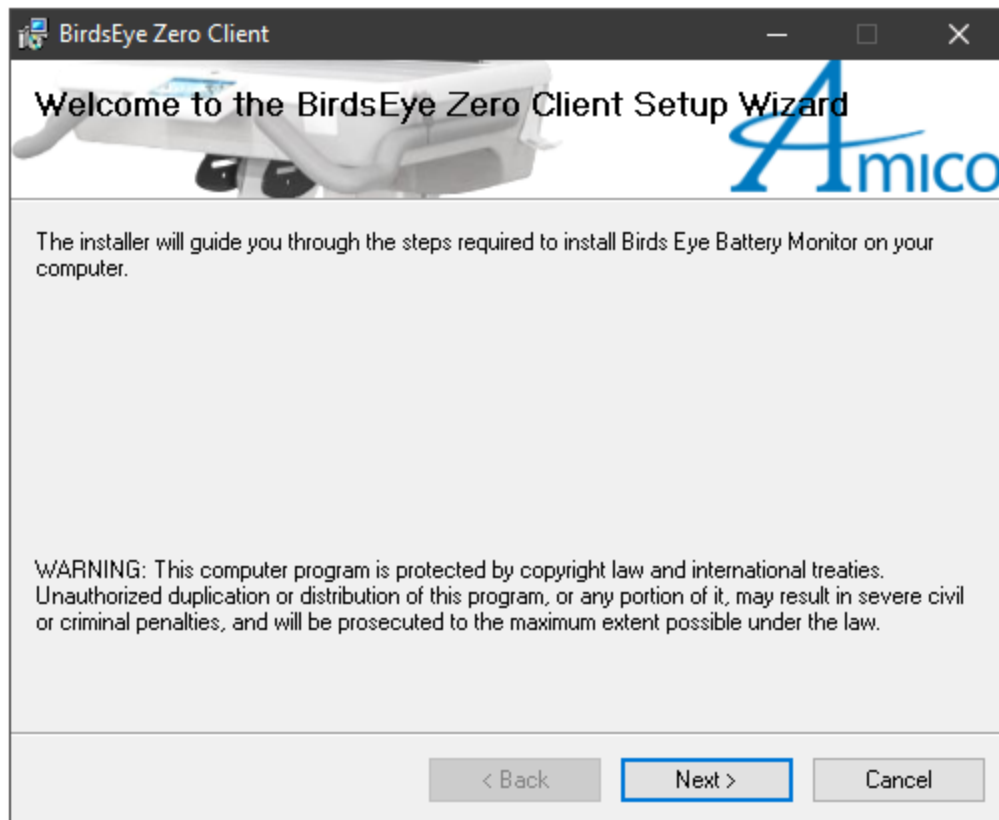
1x USB 2.0 or better for battery system

1x USB 2.0 or better required when an advanced controller is present

# Installation Steps

The following sections describes how to install BirdsEye and required device driver on Microsoft Windows.

1. Download the BirdsEye installation file or insert a USB drive with the installation file present.
2. Double-click the installation file to execute it on the local computer.
3. If the current user is not an administrator on the local computer, Windows will prompt for an administrative user name and password before proceeding with the installation.
4. When the Welcome screen is visible (**Figure 1**), click "Next".



**Figure 1**

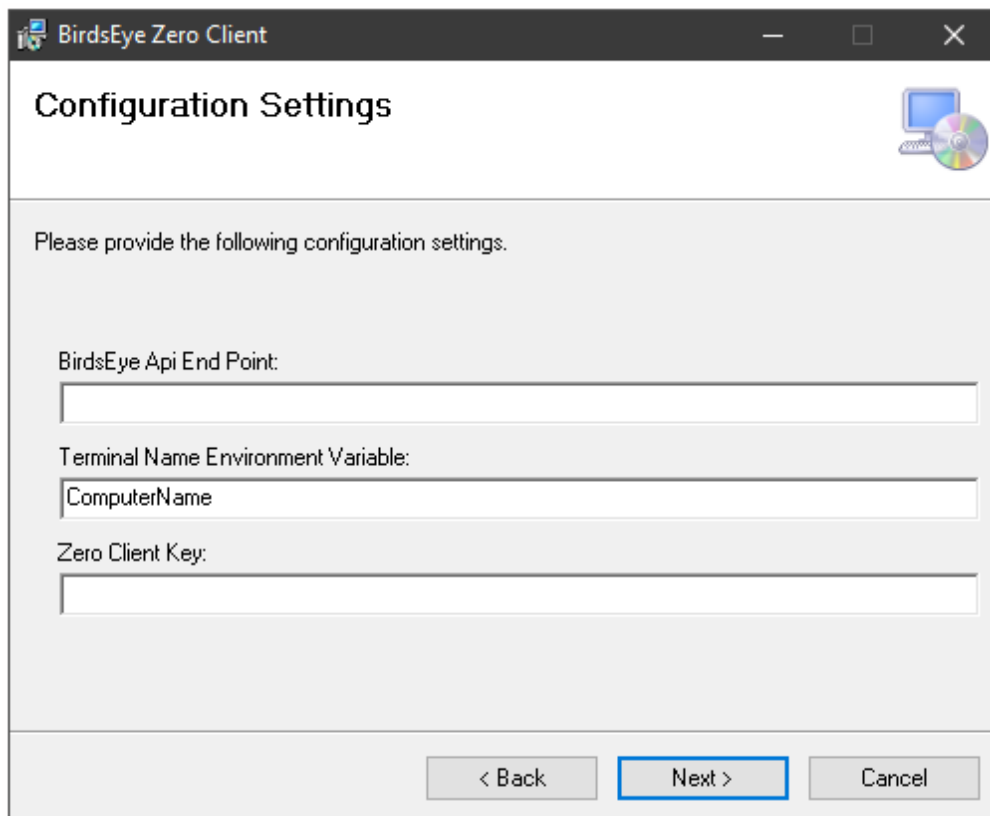
# Installation Steps

5. When the Configuration Setting screen appears, enter any configuration settings that are not already completed and click "Next" (**Figure 2**).

**BirdsEye Api End Point:** The URL (including port number) of the BirdsEye Cart Api service.

**Terminal Name Environment Variable:** If you are using VMWare Horizon please change this to ViewClient\_Machine\_Name.

**Zero Client Key:** This is the key that was generated for Thin/Zero Clients and saved in the BirdsEye dashboard under Fleet Management settings.

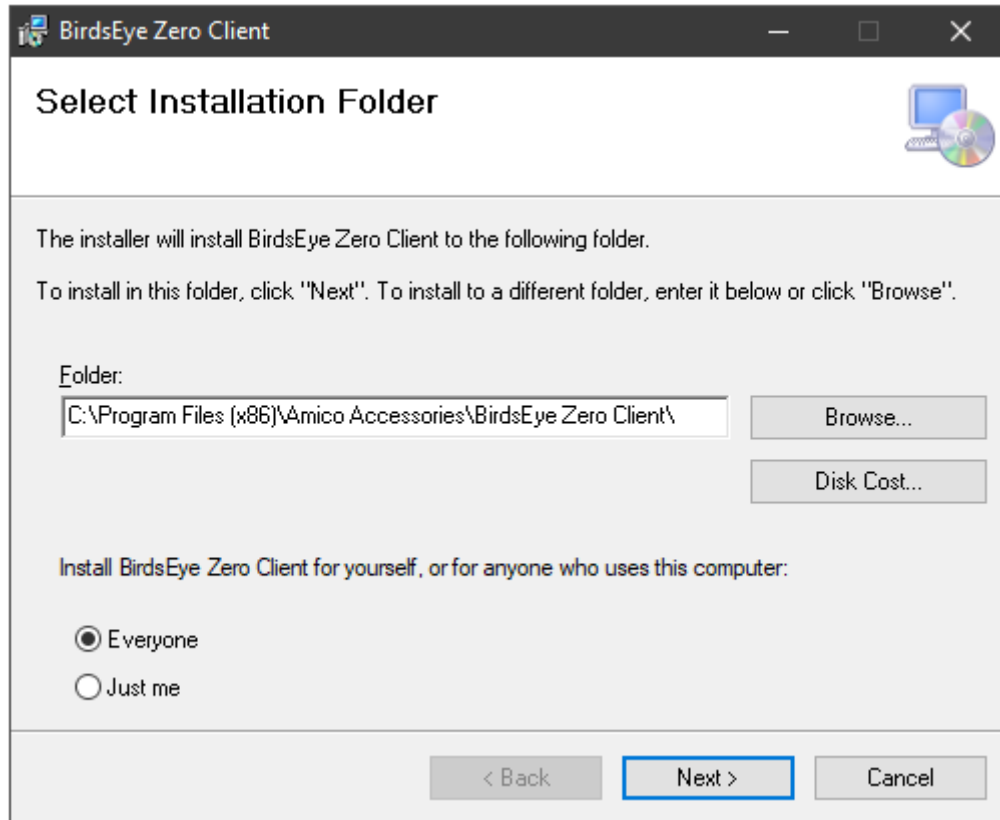


The image shows a Windows-style dialog box titled "BirdsEye Zero Client" with a standard title bar (minimize, maximize, close). The main title of the dialog is "Configuration Settings". In the top right corner, there is a small icon of a computer monitor and a CD/DVD. Below the title, the text reads "Please provide the following configuration settings." There are three input fields: the first is labeled "BirdsEye Api End Point:" and is empty; the second is labeled "Terminal Name Environment Variable:" and contains the text "ComputerName"; the third is labeled "Zero Client Key:" and is empty. At the bottom of the dialog, there are three buttons: "< Back", "Next >" (which is highlighted with a blue border), and "Cancel".

**Figure 2**

# Installation Steps

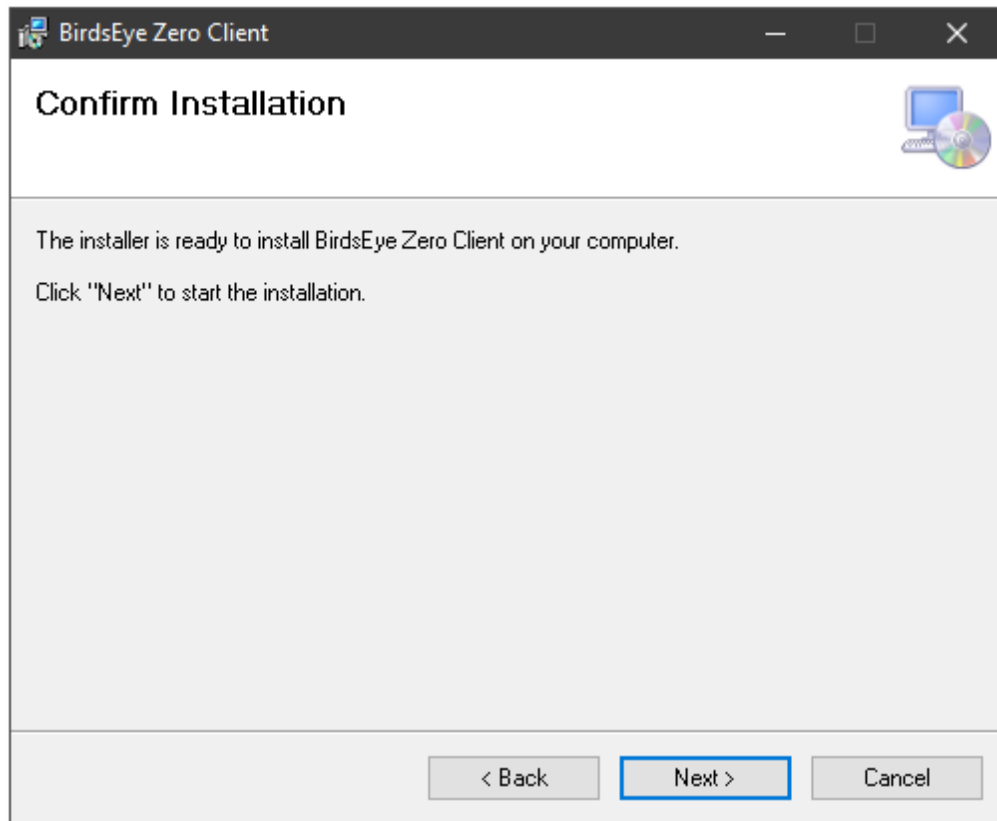
- When the Installation Folder screen appears, change the installation folder if required, or accept the default and click "Next" (**Figure 3**).



**Figure 3**

# Installation Steps

7. Click "Next" on the Installation Confirmation screen to proceed with the installation (**Figure 4**).



**Figure 4**

8. Once the installation is complete, BirdsEye will launch.
9. When the Installation Complete Screen displays, click "Close".

[www.amico.com](http://www.amico.com)

Amico Accessories Inc. | 122 East Beaver Creek Road, Richmond Hill, ON L4B 1G6, Canada  
Toll Free Tel: 1.877.264.2697 | Tel: 905.763.7778 | Fax: 905.763.8587  
Email: [info@amico-accessories.com](mailto:info@amico-accessories.com) | [www.amico.com](http://www.amico.com)